

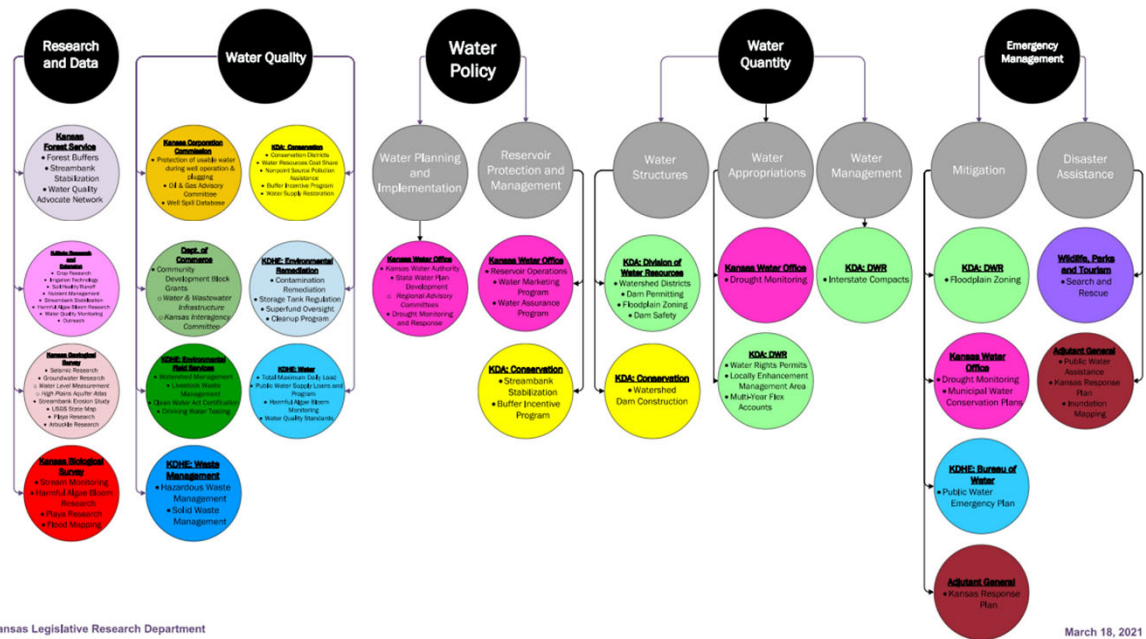


Kansas WaterHub Development

November 2024

Water Management in Kansas Today

2021 Kansas Water Organizational Chart



Kansas Legislative Research Department

March 18, 2021

Good information exists, sometimes it's just hard to find

- Information on services, programs, funding and more exists across agency websites **but hard to know where to look**
- No central place for **grant or cost-share opportunities** across agencies (and local or federal partners)
- Hard to communicate **impact of water investments and services** across agencies
- Need a place to host centralized data tools, educational resources, news, and more **across all water issues**

There's got to be a better way!

What if we had a place to **start** on water where you can:

- Know the latest on **water news and jobs** in Kansas regardless of agency or issue
- Understand where **different services live** in Kansas on water
- Find **water-funding opportunities** for everyone's needs – infrastructure, cost-share, etc.
- Understand how **your taxpayer dollars are being spent** on water



Get ready for the Kansas WaterHub!

A one-stop **portal** to help Kansans better access information on water news, services, funding, and more!

Core Components of the Portal

News

Services

Funding

Impact

Careers

Data

Types of Users

Communities

Businesses

Landowners

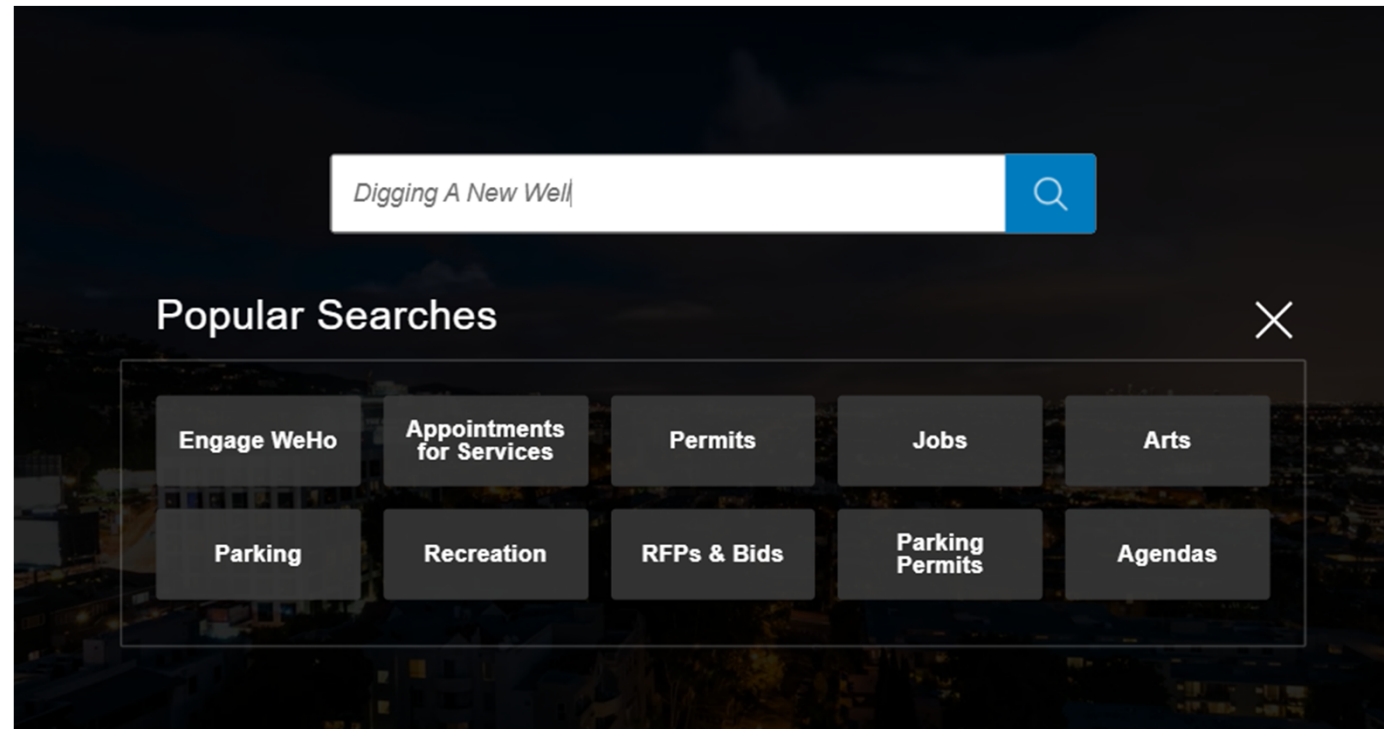
“Navigators”

Policymakers

General
Public

Services

- Know **who does what** on water in Kansas and be linked to more information
- **Not meant to reproduce existing agency websites**, but make info easier to access



Funding

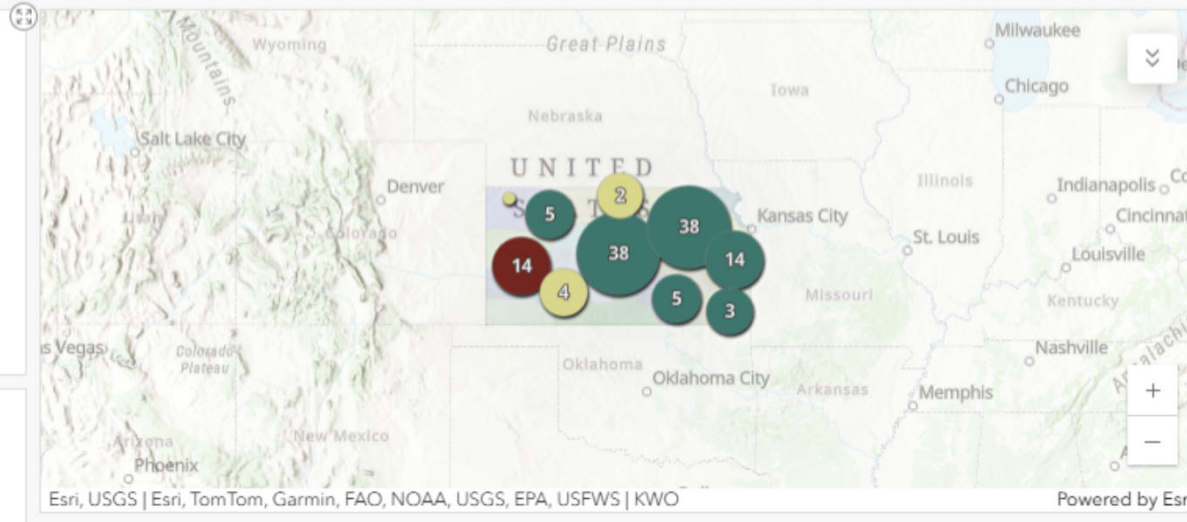
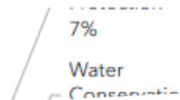
- Be able to search for different funding opportunities and filter based on **who you are** (producer, municipality, etc.) or **what grants are still open**
- Be linked to appropriate application page on agency website
- We eventually want to include other funding (fed, local, etc.) applicable to Kansas

Agency	Program Type	Program	Description	Eligible Applicants
KS Dept. of Agriculture, Division of Conservation	Water Conservation	Conservation Reserve Enhancement Program (C	Irrigation Water Right Retirements under FSA's Conservation Reserve Enhancement F	Landowners
KS Dept. of Agriculture, Division of Conservation	Water Conservation	Water Transition Assistance Program (WTAP)	Irrigation Water Right Retirements under KDA's Water Right Transition Assistance F	Landowners
KS Dept. of Agriculture, Division of Conservation	Infrastructure	Watershed Dam Construction & Rehabilitation	Rehabilitation of Existing Watershed Dams and Construction of New Dams	Watershed Districts, Special Districts and Landow
			Funding for construction, repair, maintenance or replacement of water-related infrastructures and any related construction costs; Matching moneys for grant or loan applications for water-related infrastructure projects; and	
			Application of the funds to an outstanding loan balance from the Public Water Supply Loan Fund (established in K.S.A. 65-3322 and amendments thereto) or the Kansas Pollution Control Fund (established in K.S.A. 65-163e, and amendments thereto) subject to the certain criteria.	
Kansas Water Office	Infrastructure	HB2303 Project Grants	Planning, engineering, managing and other technical assistance that may be necessary in the development of plans for water infrastructure projects; or	Municipalities, Special district related to water org
			Processing grant and loan applications for such water infrastructure projects.	Municipalities, Special district related to water org
Kansas Water Office	Technical Assistance	HB2303 Technical Assistance Grants		
KS Dept. of Agriculture, Division of Conservation	Cost-Share Funding	Soil Health	Cover Crops	Landowner or Producer
KS Dept. of Agriculture, Division of Conservation	Cost-Share Funding	Wetland Development/Restoration	Constructed Wetland	Landowners
KS Dept. of Agriculture, Division of Conservation	Cost-Share Funding	Wetland Development/Restoration	Wetland Enhancement	Landowners

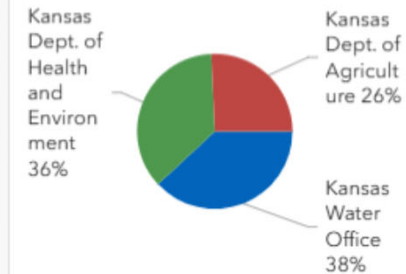
Total Awarded Amount:

47.2M

Project Category:



Agency:



Impact

- Where do investments in the State Water Plan Fund go? How do they impact the different guiding principles of the State Water Plan?
- Here is an example (Shoutout Katie Goff)!

Data

- We want to start with linking folks to different water quality and quantity data sources in Kansas
- Eventually, we can **integrate** this page with other data coordination efforts

Careers

- Highlighting water jobs in **state agencies** and **partners**
- Links to other water career pages to help **promote open opportunities**

Where are we at?

- Agencies have done lots of work consolidating information and thinking through top questions, needs, and types of information for a portal
- We recently **signed a contract** with the vendor who did Colorado's Department of Natural Resources website
- This is meant to be an **iterative** and **collaborative project** – growing and changing by incorporating stakeholder feedback, adding features, and integrating new information
- Going to **start with info for 5 core agencies** (KDHE, KDA, KWO, KDC, and KDWP) and then build from there.

Where are we going?

Initial Portal (Quick Site)

3-5 Months

Collect stakeholder
feedback

Full Portal V1

9 Months

Includes searchable
funding and services
database

V2, V3 ... and More

Ongoing

Start involving other
agencies and partners

What we need today.

- **Your feedback and questions!**
- What are we missing, what would be helpful to include in the site?
- Tell me now or use the QR code on this slide to send feedback!

