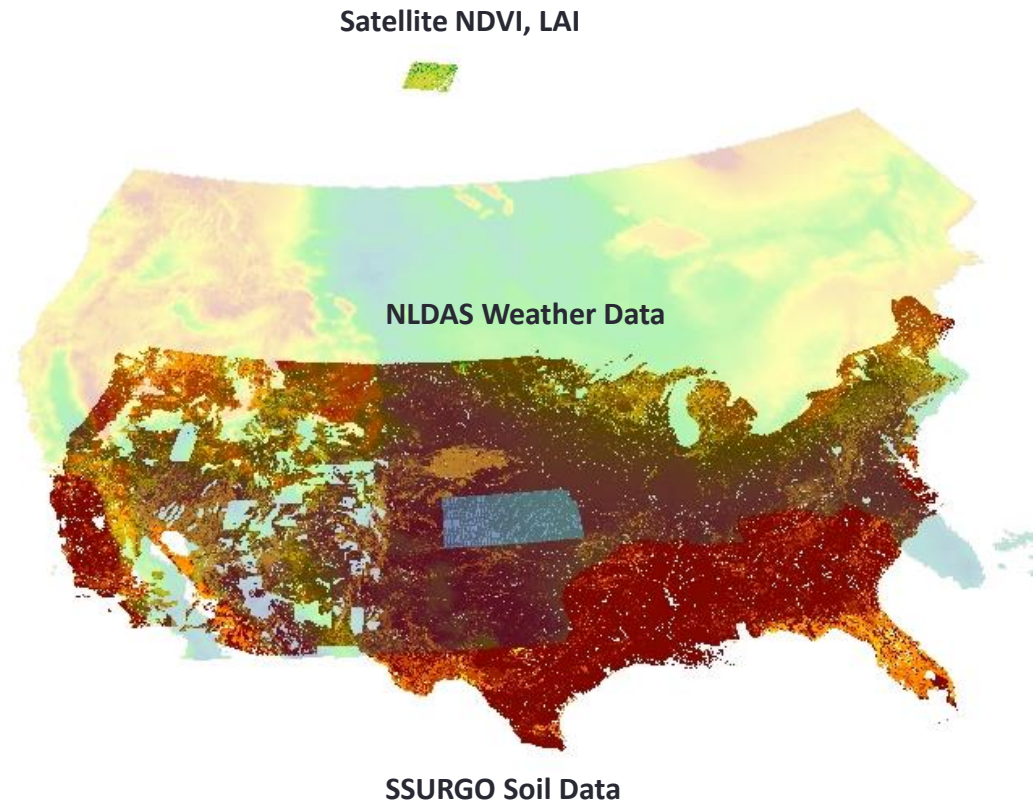
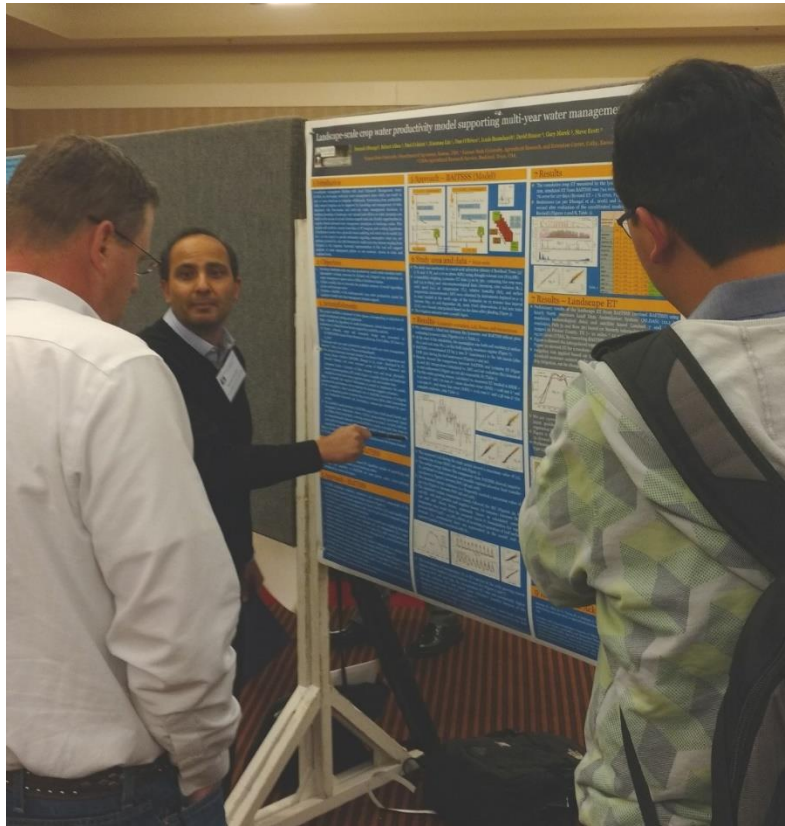


# Water Metrics: Information for Water Management

Rob Aiken, Ramesh Dhungel, Xiaomao Lin, Dan O'Brien, Louis Baumhardt, Paul Colaizzi



BIATSSS Inputs

Ramesh Dhungel, BAITSSS Developer,  
Ogallala Aquifer Workshop, 2017

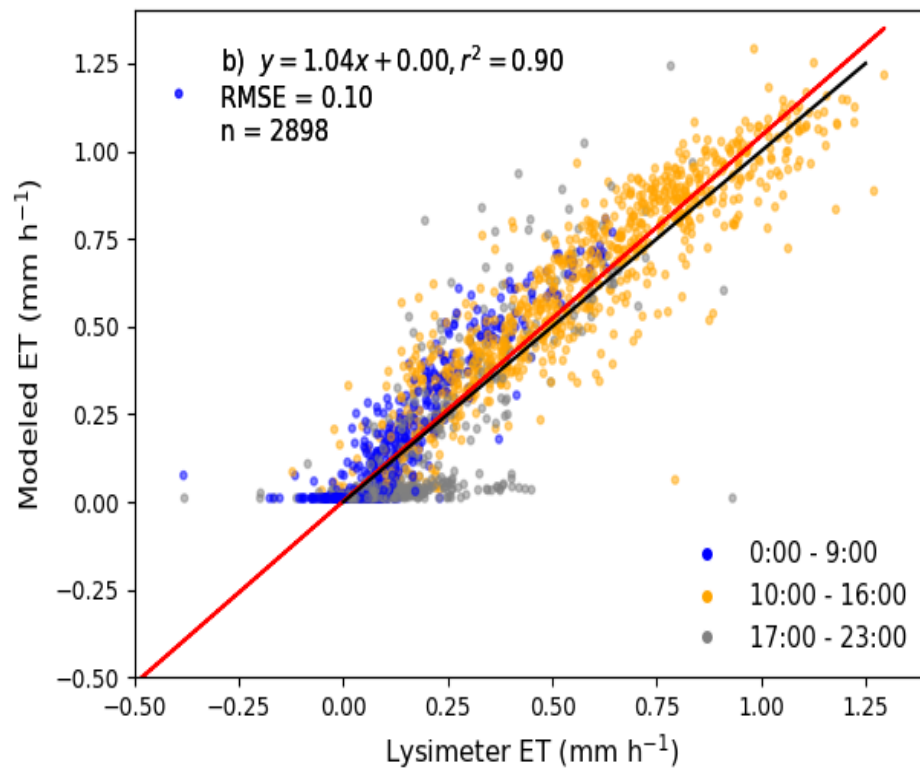
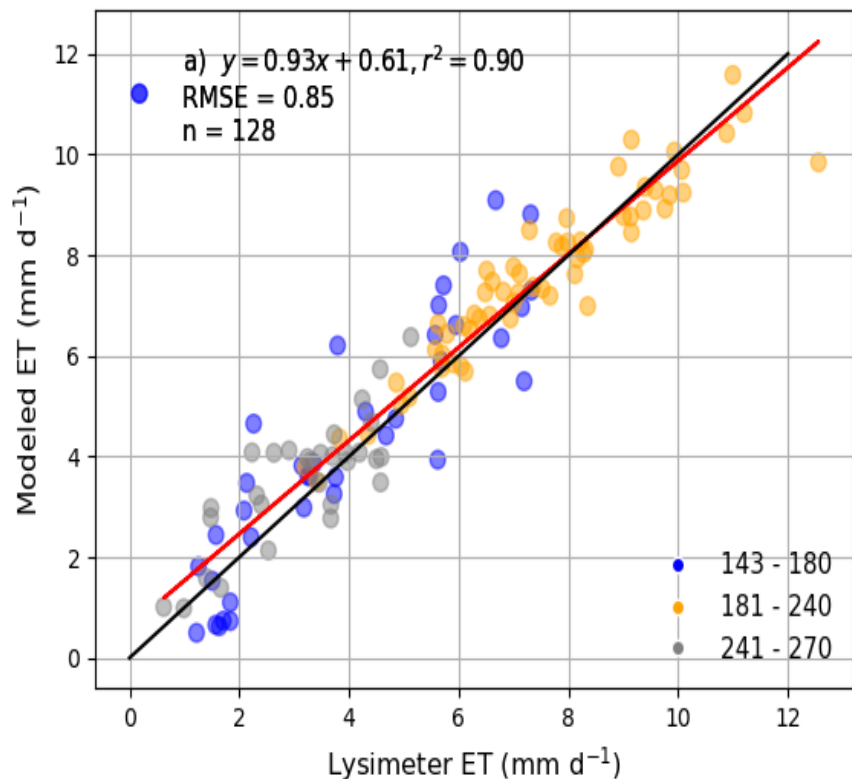
# Precision Weighing Lysimeter, installation and operation



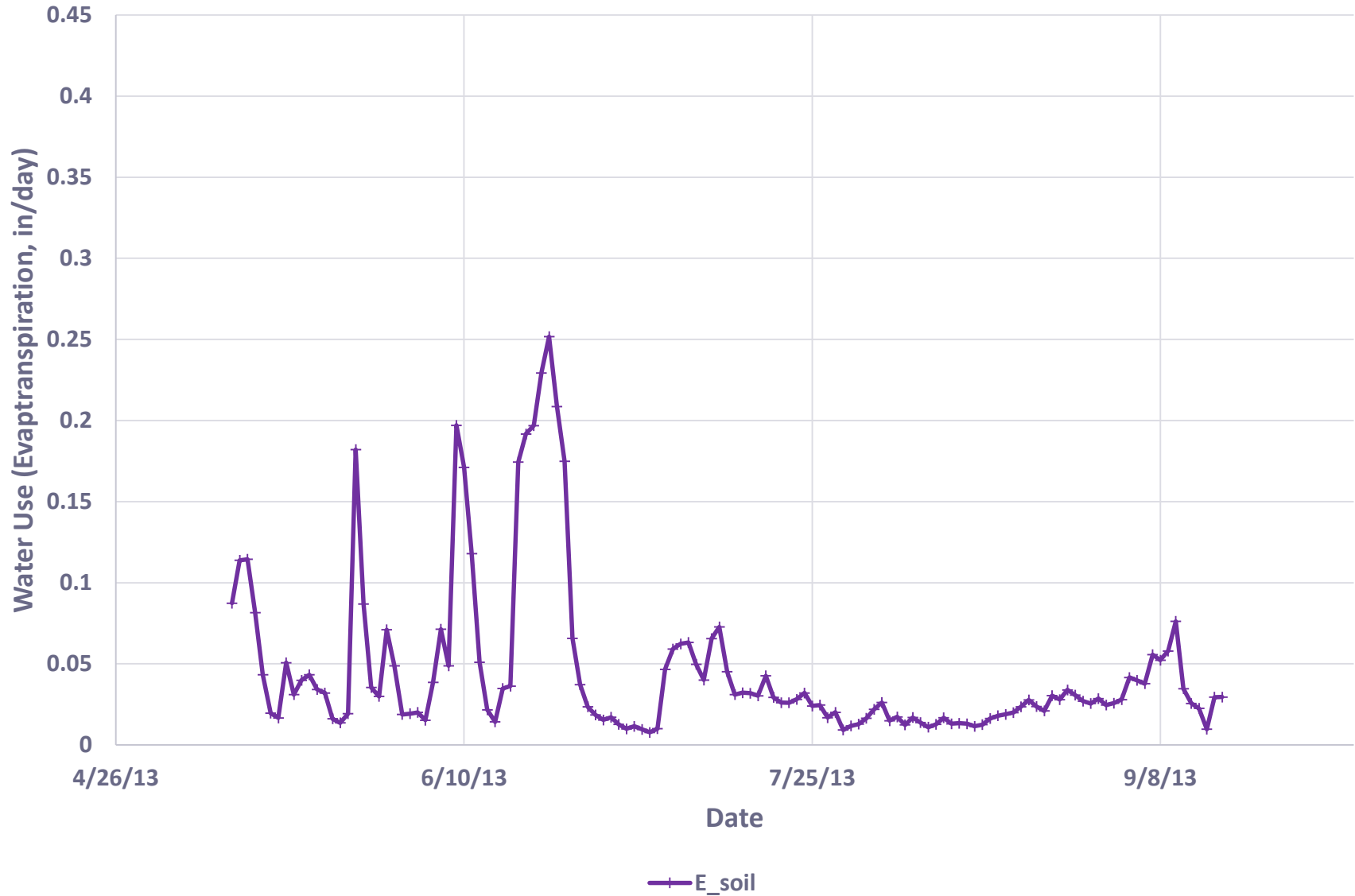
Calibrated accuracy of the Bushland weighing lysimeters is 0.002”



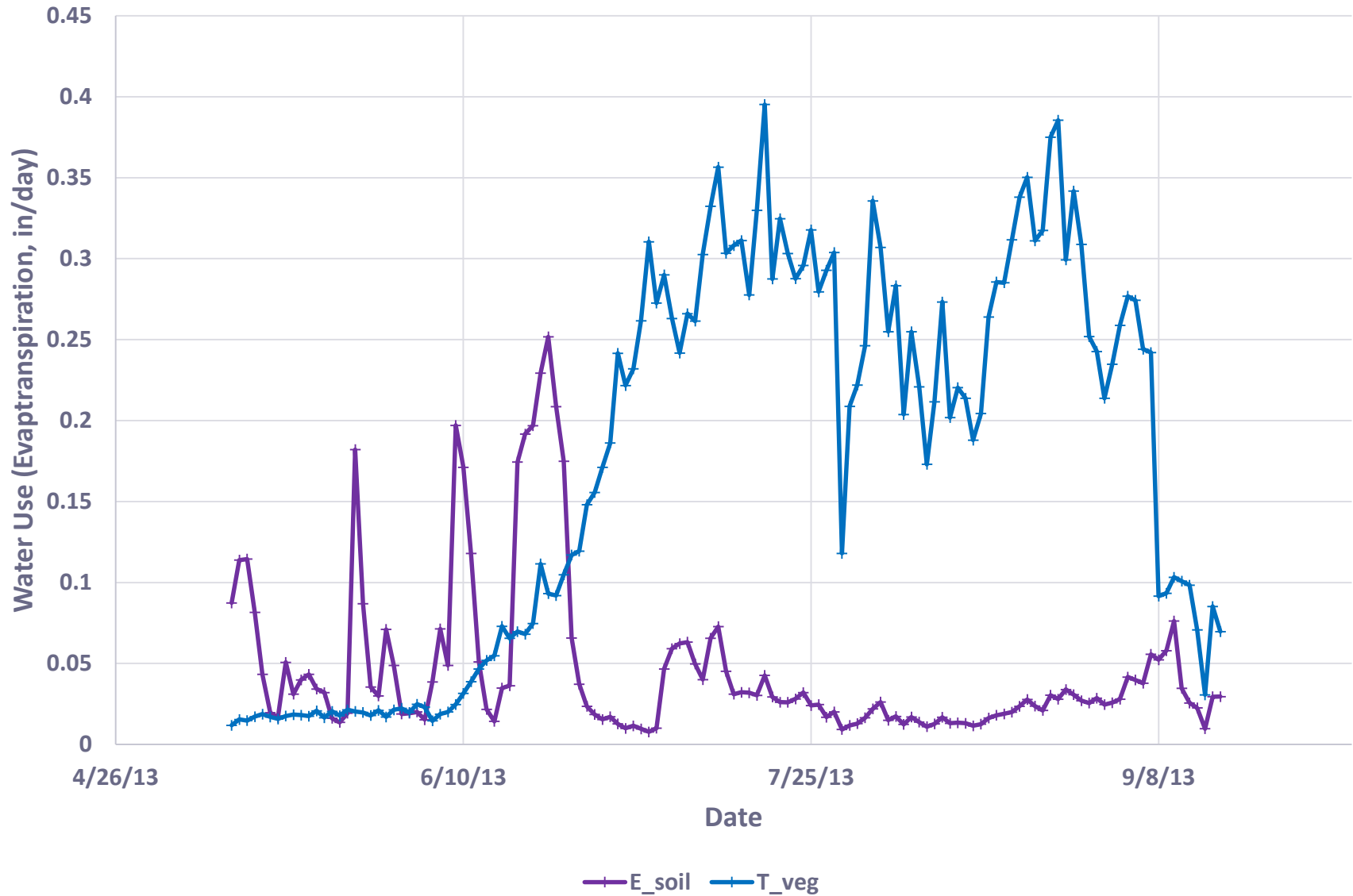
# Results of BAITSSS model against Lysimeter ET Corn, 2016, Bushland, TX



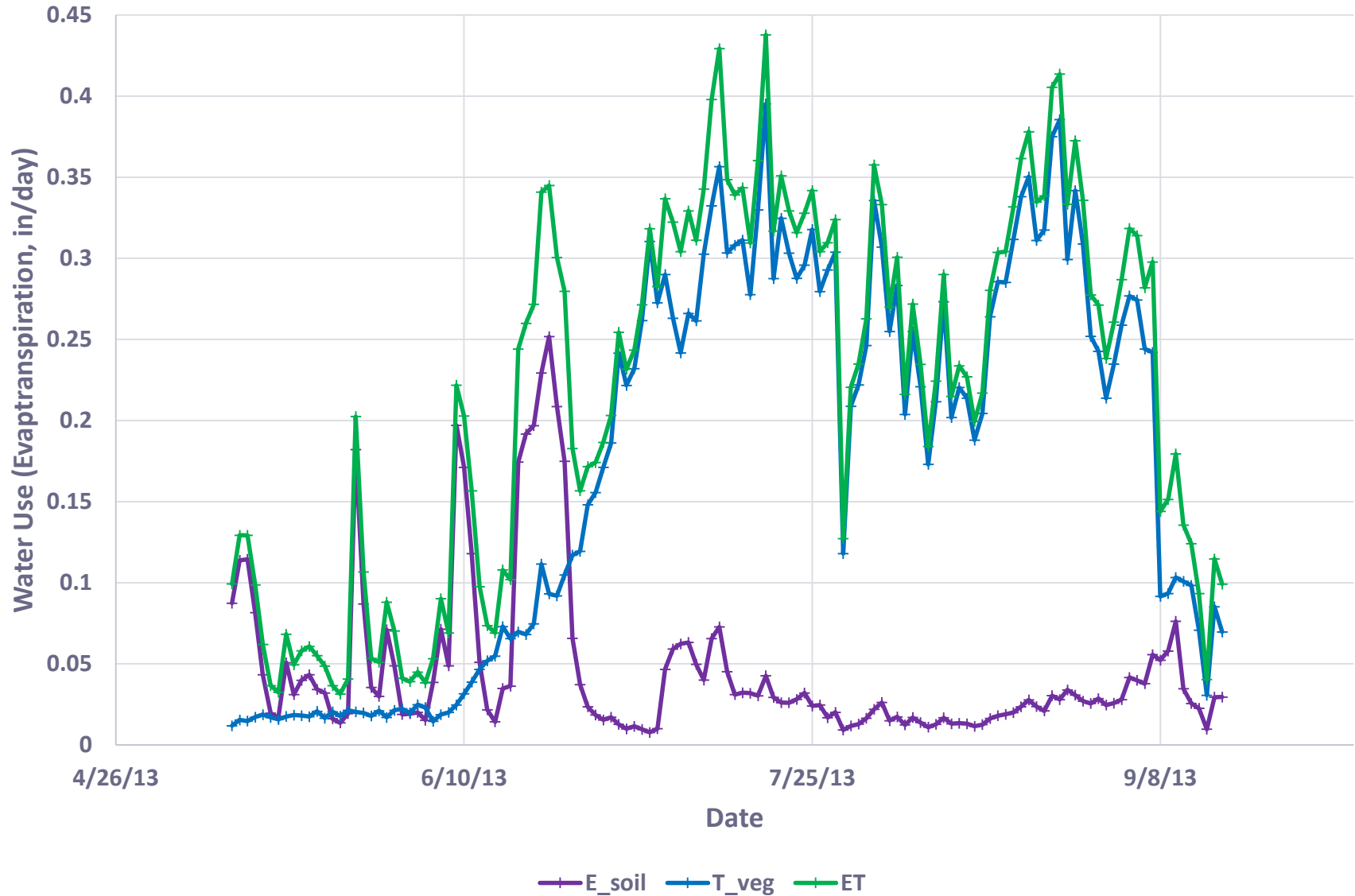
# Simulated E and T, Corn, 2013, Field 16 T9S R41W



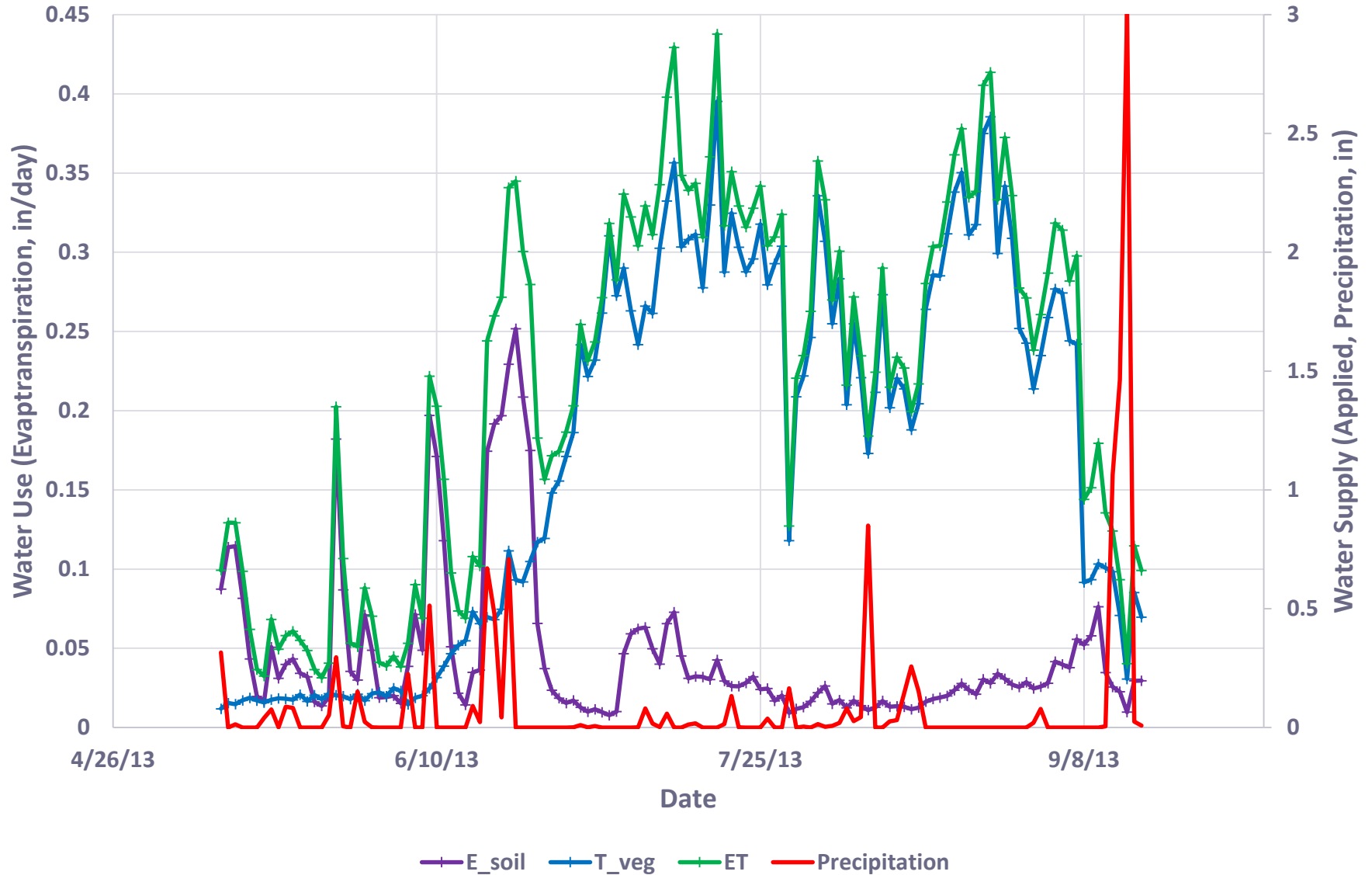
# Simulated E and T, Corn, 2013, Field 16 T9S R41W



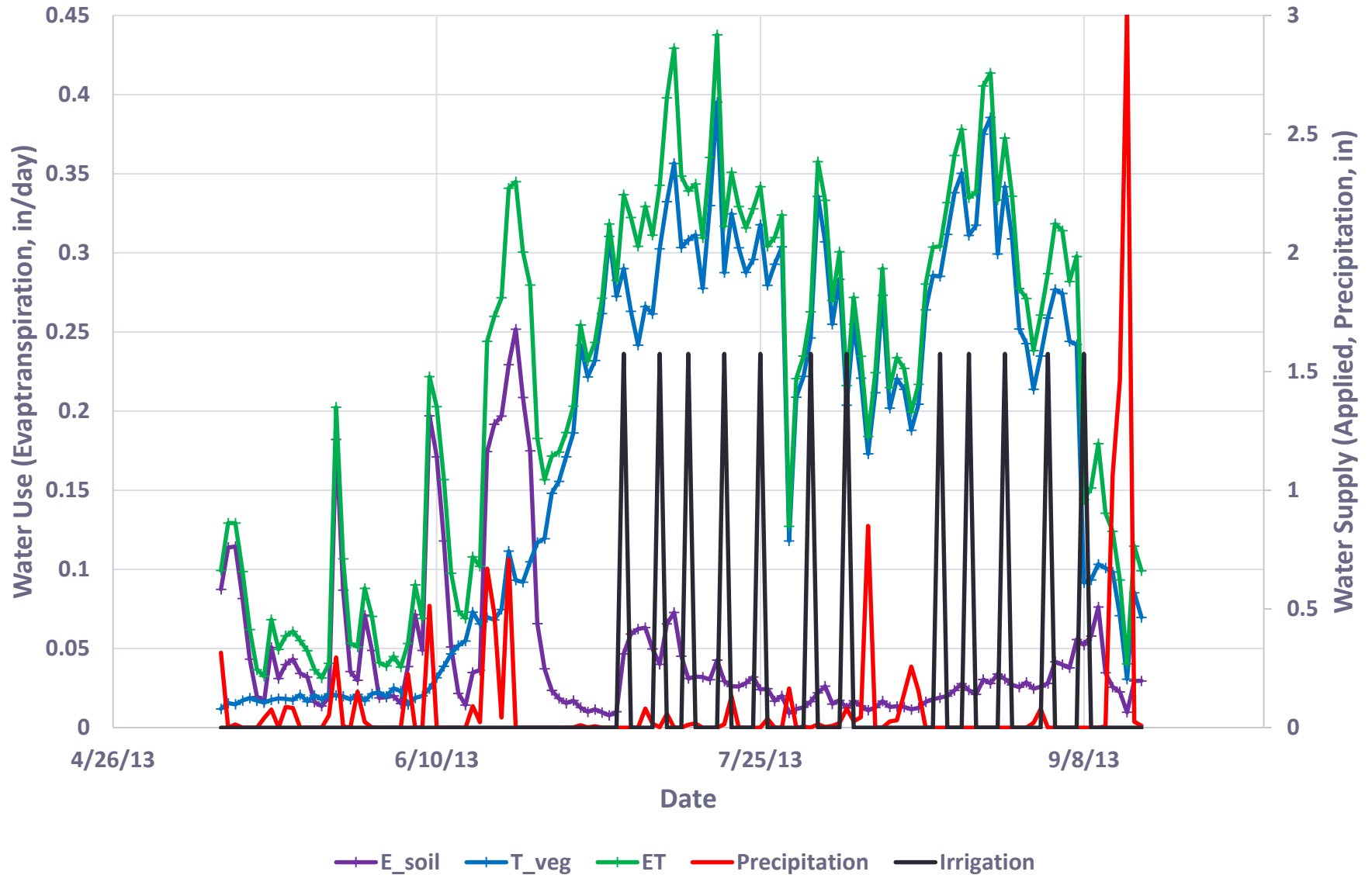
# Simulated E and T, Corn, 2013, Field 16 T9S R41W



# Simulated E and T, Corn, 2013, Field 16 T9S R41W



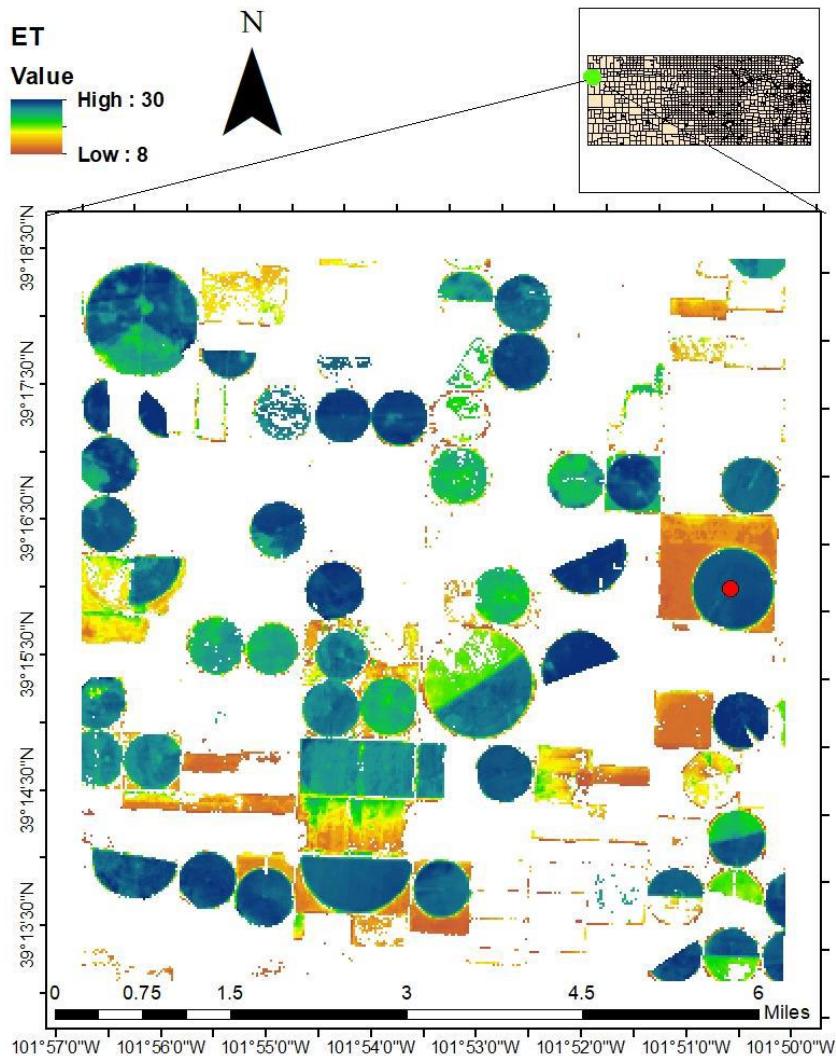
# Simulated E and T, Corn, 2013, Field 16 T9S R41W



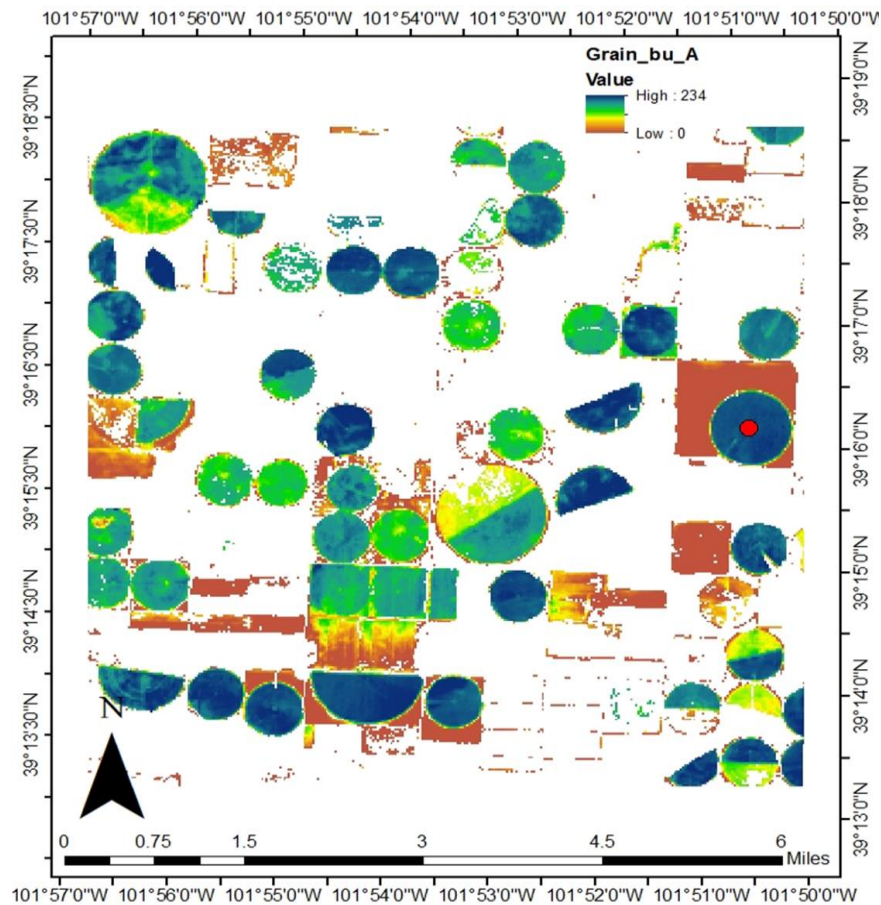


# Crop ET provides basis for calculating expected crop yields

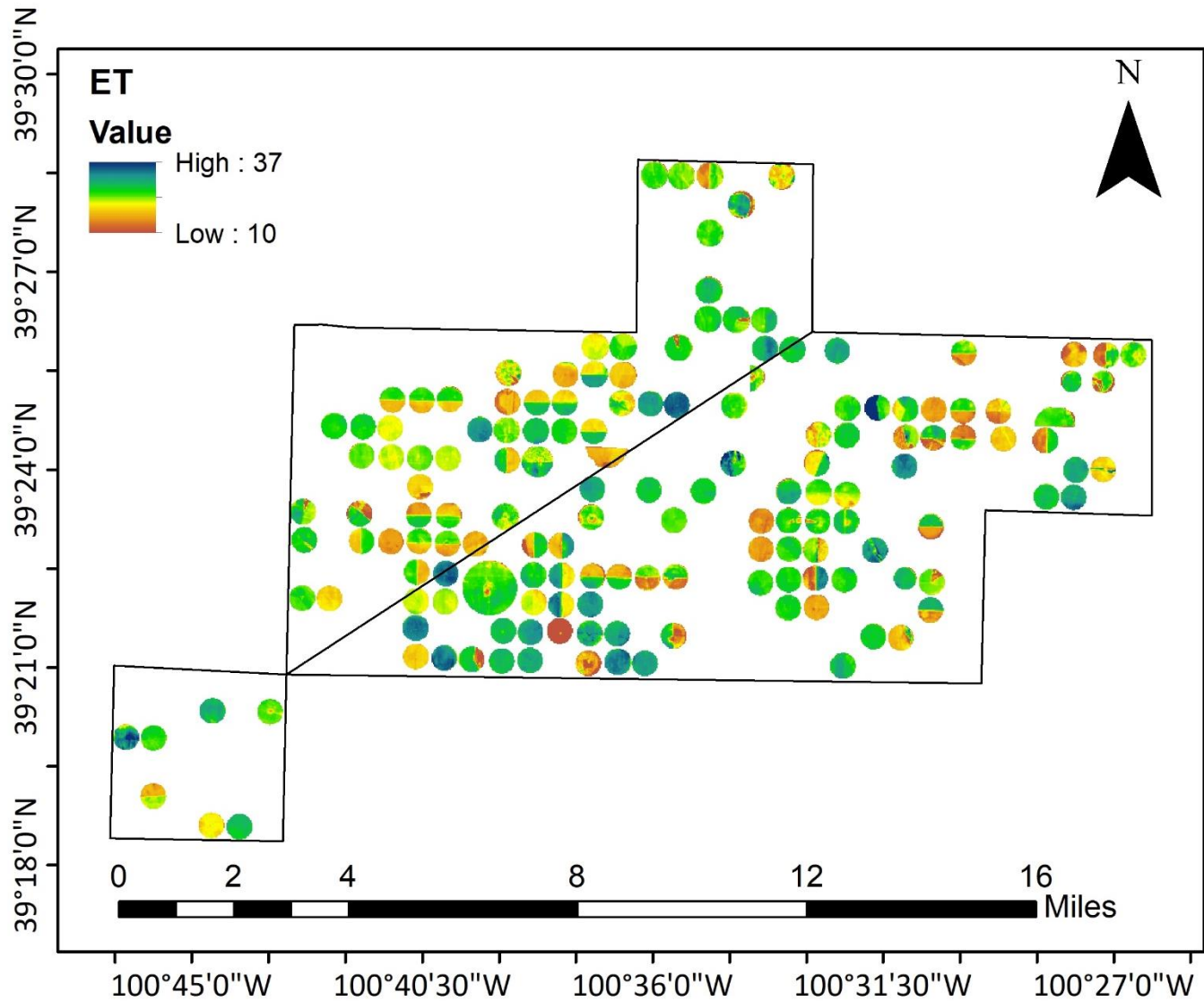
## Preliminary results for 2013 growing season T9S R41W



### Preliminary grain yield estimates, based on crop ET



# Landscape ET of SD-6



# Crop Water Use Simulation Sheridan 6 LEMA, Pre and Post

