

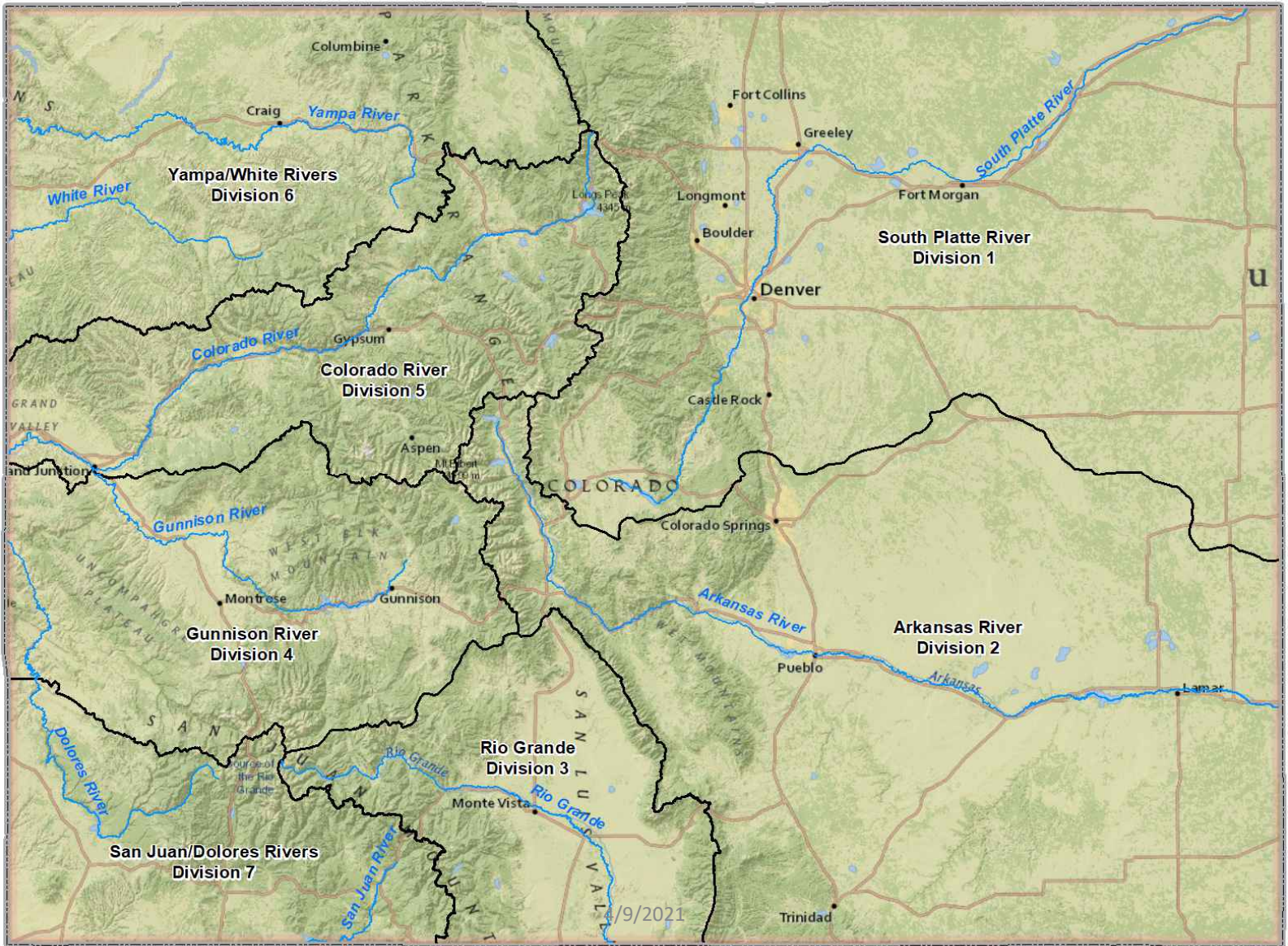
# Colorado Proposal for Multi-use Account in John Martin Reservoir – Background

Upper Arkansas Regional Advisory Committee / April 9, 2021

Rachel Duran (KDA-DWR)

Kevin Salter (KDA-DWR)

4/9/2021



Yampa/White Rivers  
Division 6

Colorado River  
Division 5

Gunnison River  
Division 4

San Juan/Dolores Rivers  
Division 7

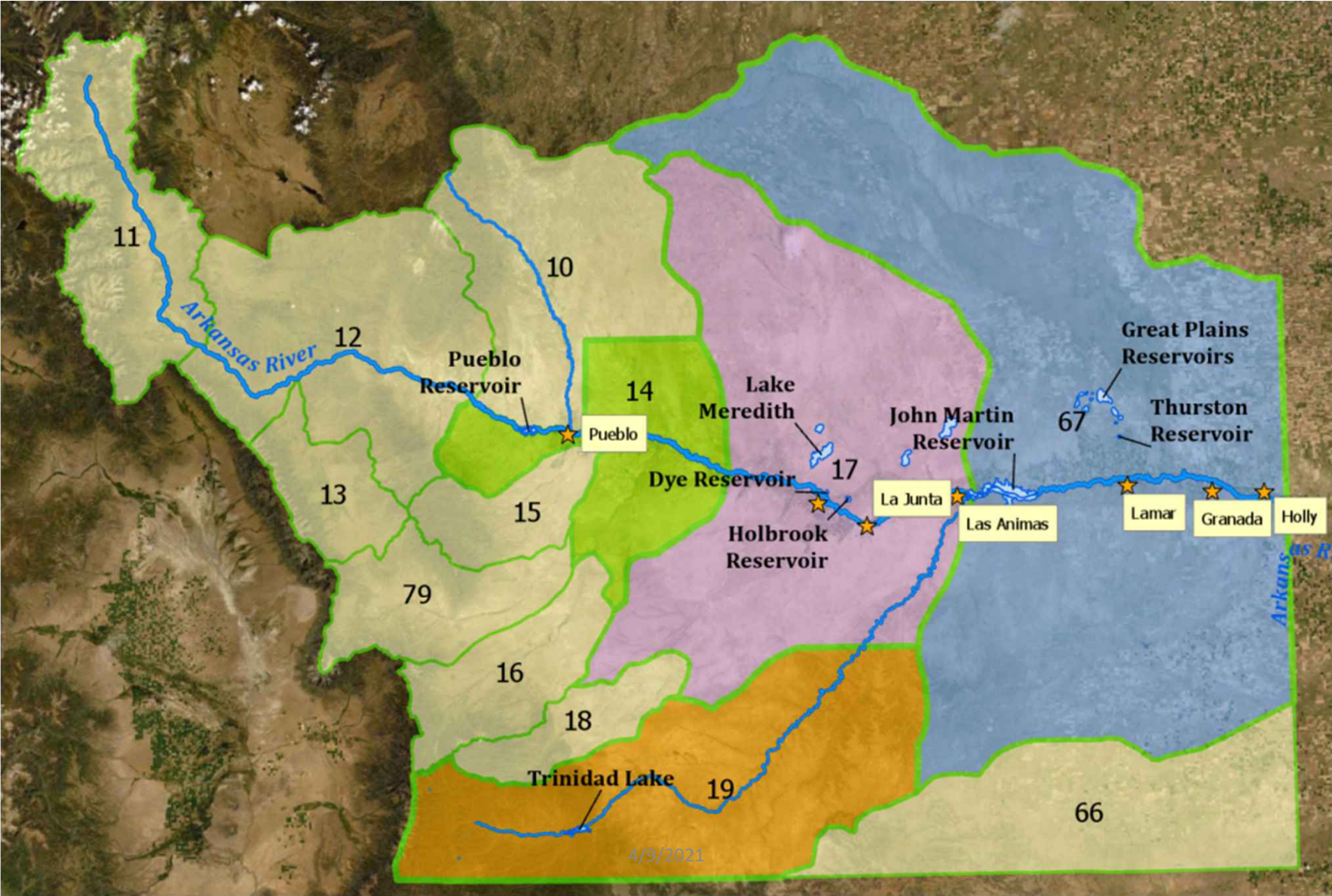
Rio Grande  
Division 3

Arkansas River  
Division 2

South Platte River  
Division 1

9/2021

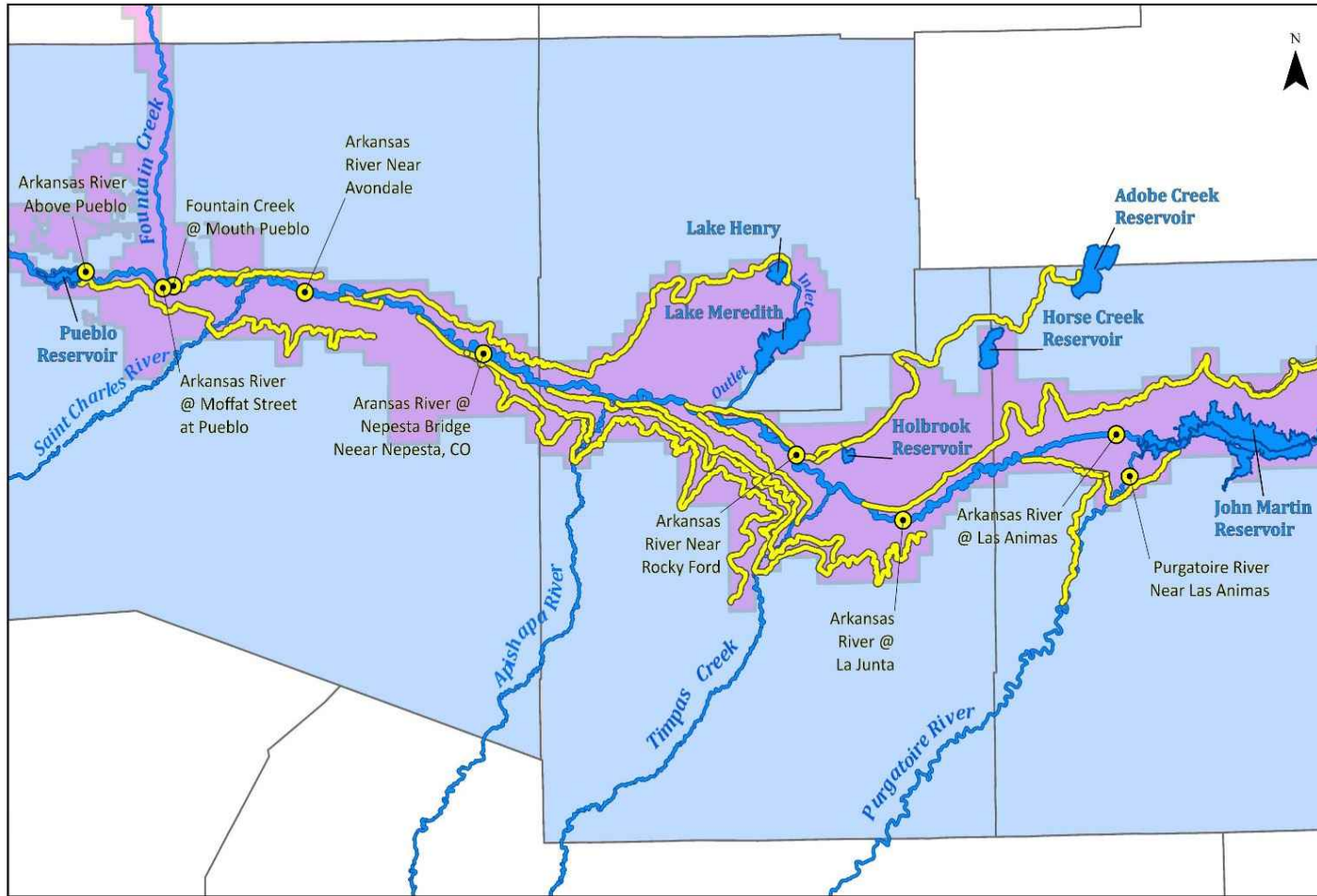




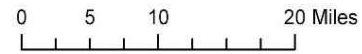
# Conservancy Districts/Well Associations

- Water Conservancy Districts
  - Protect and manage water resource
    - Southeastern Colorado Water Conservancy District (SECWCD)
    - Lower Arkansas Water Conservancy District (LAVWCD)
    - Purgatoire River Water Conservancy District (PRWCD)
- Large Well Associations
  - Aids members in replacing depletions from groundwater pumping
    - Arkansas Groundwater Users Association (AGUA)
    - Colorado Water Protective and Development Association (CWPDA)
    - Lower Arkansas Water Management Association (LAWMA)

## Arkansas River stretch from Pueblo Reservoir to John Martin Reservoir



- Gages\_Pueblo\_to\_JMR
- Rivers/Creeks
- SECWCD
- Canals/Ditches
- Colorado\_counties
- LAVWCD



# History of Request for Account

- 2013 - Initial request brought to December 2013 ARCA annual meeting by one of the well associations
- 2015 to 2017 – Lower Arkansas Valley Water Conservancy District (LAVWCD) sponsors a scoping study for a new account using Colorado Water Conservation Board (CWCB) grant. Phase I of that study was completed
- 2018 to current – Colorado and Kansas have been in discussions. LAVWCD completes additional work

# History of Request for Account

## Phase I Study proposal

Sponsored by:	LAVWCD
Prepared by:	Deere & Ault Consulting, Inc. (Longmont, CO)
Account Size:	40,000 AF <ul style="list-style-type: none"><li>➤ 30,500 AF (sum of interested party estimates)</li><li>➤ 9,500 AF (allotment estimate if more interested parties later)</li></ul>
Storage Charge:	5% of account deliveries
Interested Participants:	9 Colorado Water User Groups <ul style="list-style-type: none"><li>➤ 4 Augmentation Groups</li><li>➤ 2 Municipalities</li><li>➤ 2 Conservancy Districts</li><li>➤ 1 Energy Company</li></ul>

4/9/2021



# History of Request for Account

## Phase I Study proposal continued

### Purpose of Account:

- Better management for replacement plans and operations
- Capture fully consumable water
- Provide source of supply for dry times
- Alternative storage

### Use of Account:

- Releases out of JMR for uses downstream
- Exchanged upstream (water is released out of JMR during exchange to keep river whole)
- Booked over to other accounts within JMR

### Approval:

- Arkansas River Compact Administration (ARCA) approval
- 1980 Operating Plan modification (Agreement between states on Accounts in JMR)



# Recent Discussion Between the States

---

- Pilot Project for a temporary account
- Water quality discussions
- Storage Charge
- Kansas Subaccount
- Reduced water sources
  - Water related to Surface Water Improvement Rules (Rule 10)
  - Pueblo Reservoir controlled evacuation

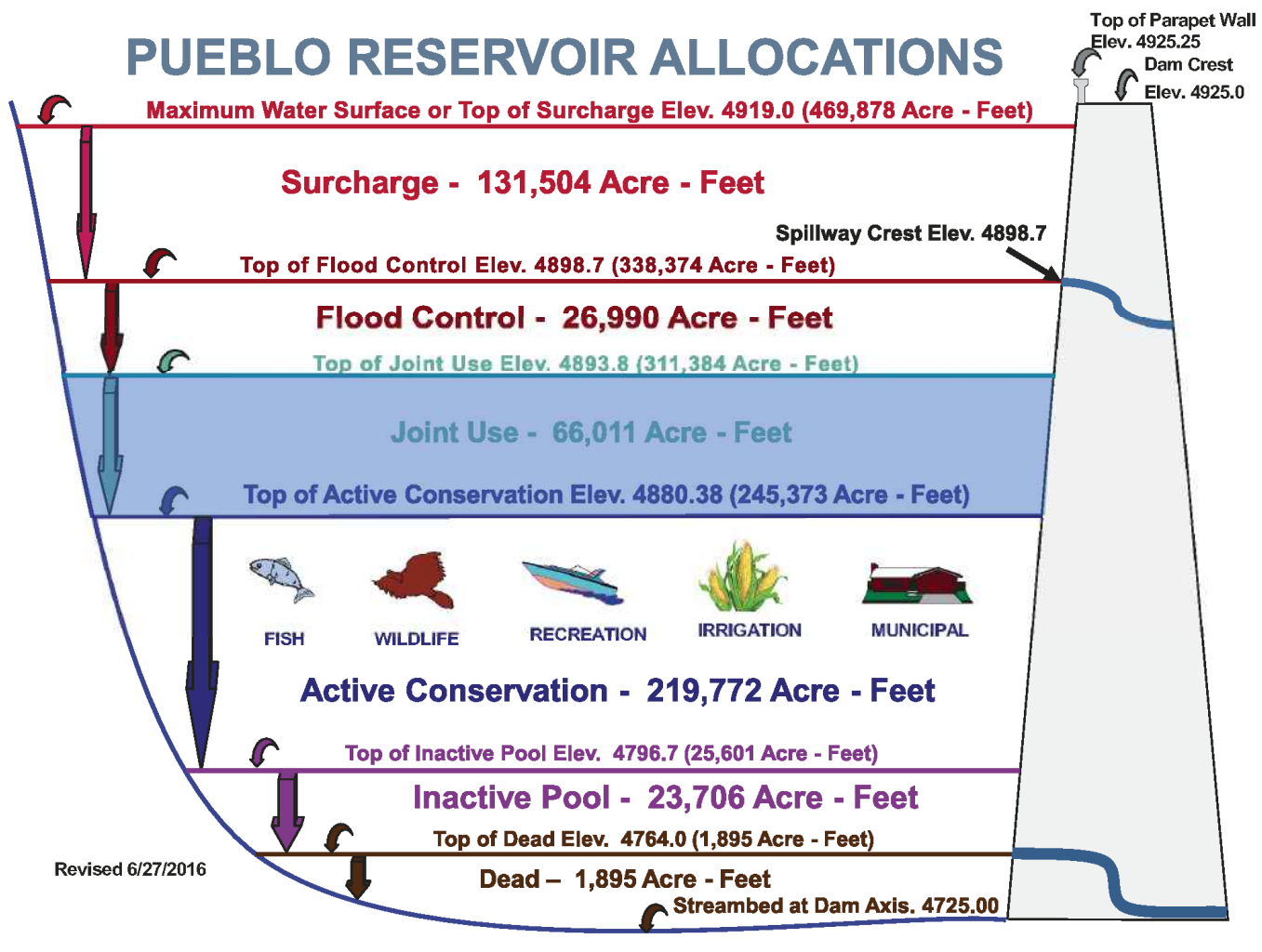
# Surface Water Improvement Rules (Rule 10)

- Surface Water Irrigation Improvement Rules
  - Effective 2011
  - Applied to improvements on or after October 1, 1999
  - Rule 10 – Compact Compliance Plans
  - Plans submitted annually to CO State Engineer
- Improvements to surface water irrigation systems
  - Conversion of flood to pivot or drip systems
  - Lining of canals, laterals, ponds
- Historical return flows must be maintained
  - Current use of ponds for sprinklers provides return flow (RF) credits
- Lining of ponds, canals, and laterals could mean improved water quality
  - Storage needed to ensure RF obligations from lining could be met

# Pueblo Reservoir Controlled Evacuation

- Pueblo Reservoir was constructed in mid 1970's as part of Fry-Ark Project
  - Managed by Bureau of Reclamation (BOR)
  - Flood Control operations managed by U.S. Army Corp of Engineers (USACE)
- Project and Non-Project water stored
- From November to April an additional 66,000 AF can be stored above active conservation
- By April 15<sup>th</sup> the Corps enforces flood control (can result in controlled evacuation)

# PUEBLO RESERVOIR ALLOCATIONS



Revised 6/27/2016

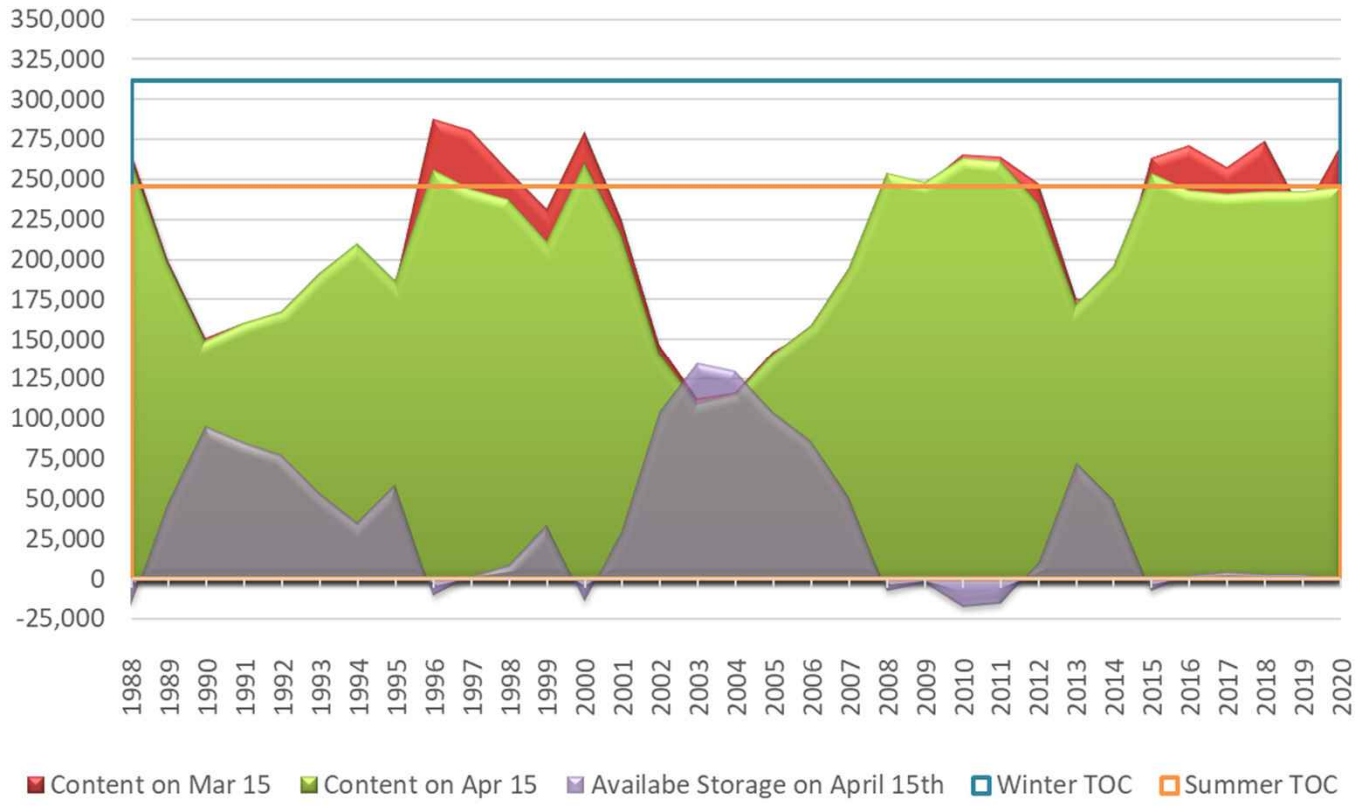
4/9/2021

Winter TOC →

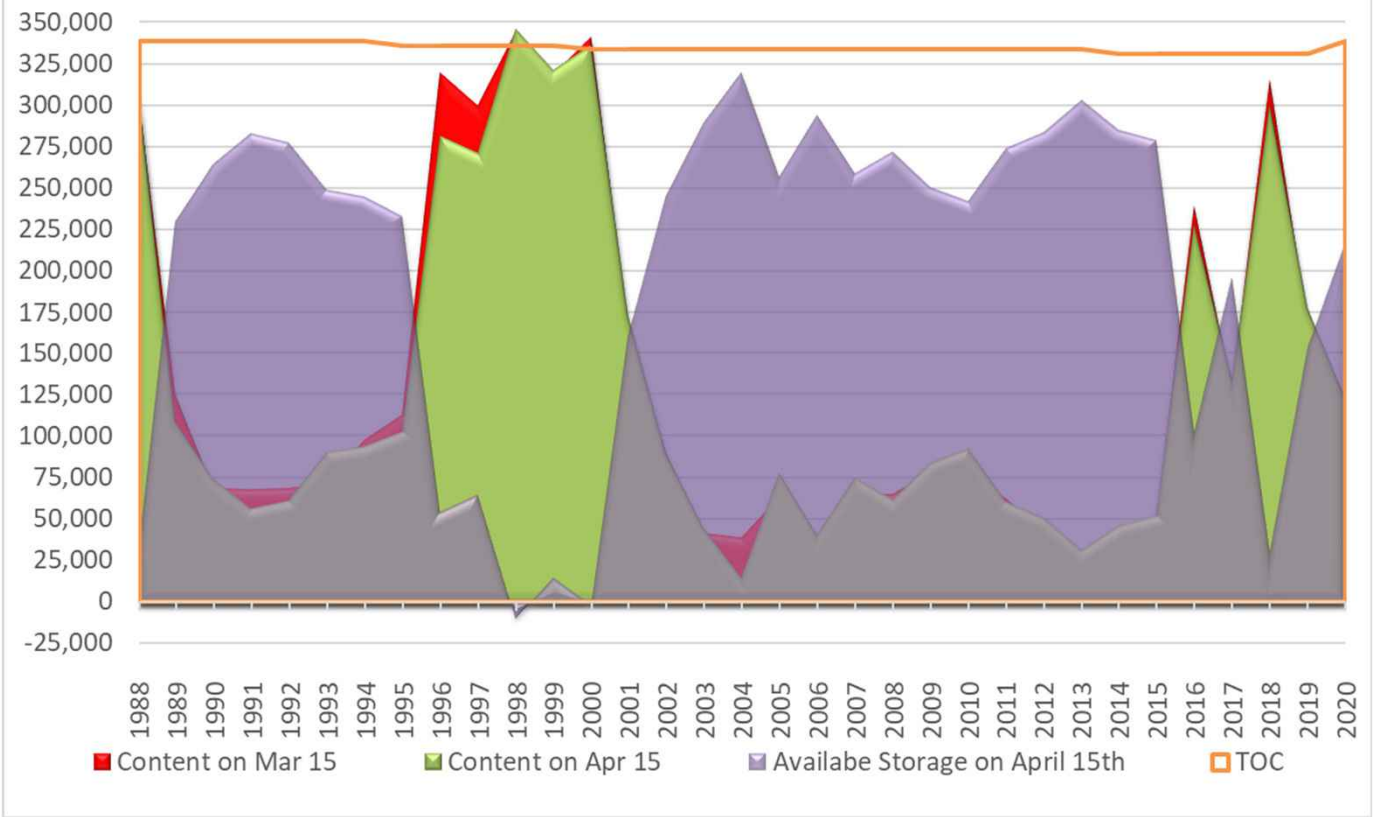
Regular TOC →



### Pueblo Reservoir - Storage Content change from March 15 to April 15



### John Martin Reservoir - Storage Content change from March 15 to April 15



## What is current practice for evacuated water?

- Purchase for permanent pools in reservoirs
- Downstream water sales
- Ran through ditch/canal or recharge ponds to recharge system
- Gravel pit storage
- Storage in off-channel reservoirs



# Benefits to Kansas

- Assurance of wet water for replacement operations
- Storage Charge
- Potential for water quality improvements
- Increased transparency through decreased use of alternative solutions
- Commitment to work towards resolution of unresolved issues between the states
  - JMR Spill related issues
  - Pueblo Winter Water Storage Program (PWWSP)

4/9/2021



# Concerns to Kansas

- Storage of water that would have otherwise come to Kansas
- Exchanges upstream
- Increase in JMR spill potential

4/9/2021



---



# Questions

4/9/2021

---