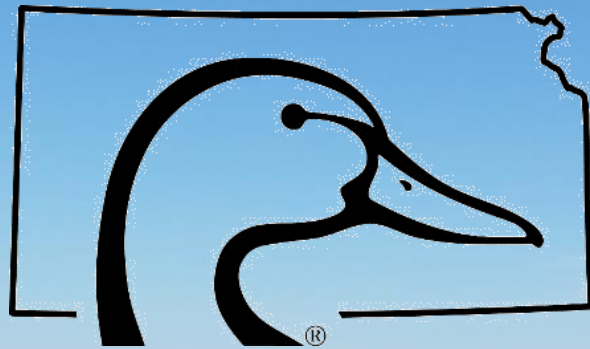


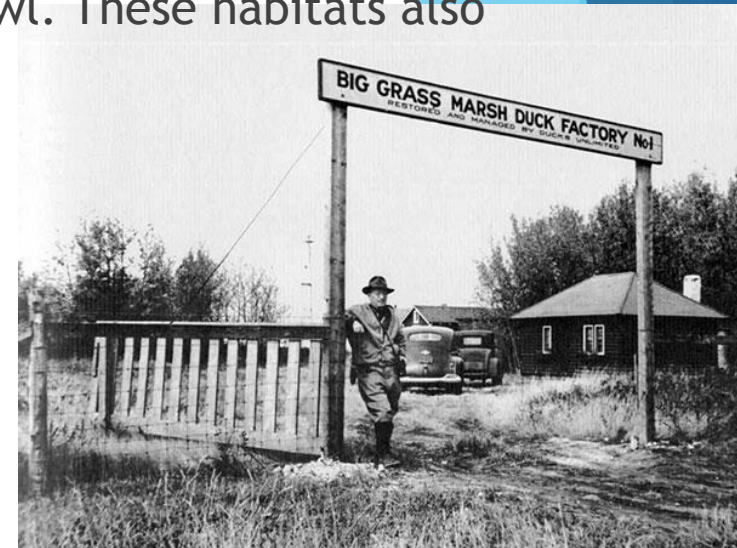
# DU Kansas Playa Lake Conservation Initiative



Abram Lollar  
Ducks Unlimited  
Western, KS

# Who is Ducks Unlimited


- ▶ 501c3 Nonprofit - est. 1937 (82years)
- ▶ Ducks Unlimited conserves, restores, and manages wetlands and associated habitats for North America's waterfowl. These habitats also benefit other wildlife and people.
  - ▶ Banquets, Fund Raising, and Donations
  - ▶ Conservation:
    - ▶ Various grant sources
    - ▶ Partnership with various agencies and landowners
    - ▶ Requires matching contribution
    - ▶ Can be in-kind contribution
    - ▶ Piggy-back with other partner programs (Farm Bill, KDWPT, etc.)
- ▶ The vision of Ducks Unlimited is wetlands sufficient to fill the skies with waterfowl today, tomorrow and forever.



# Why is DU in Kansas?

Kansas migration habitats provide “rest and refueling” areas for millions of waterfowl



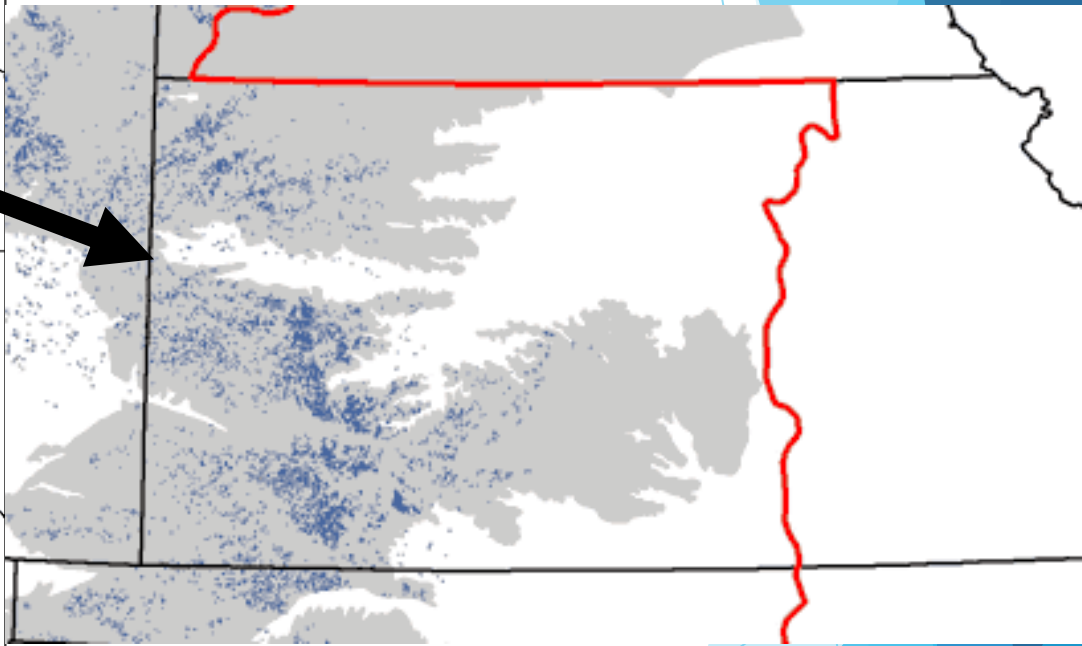
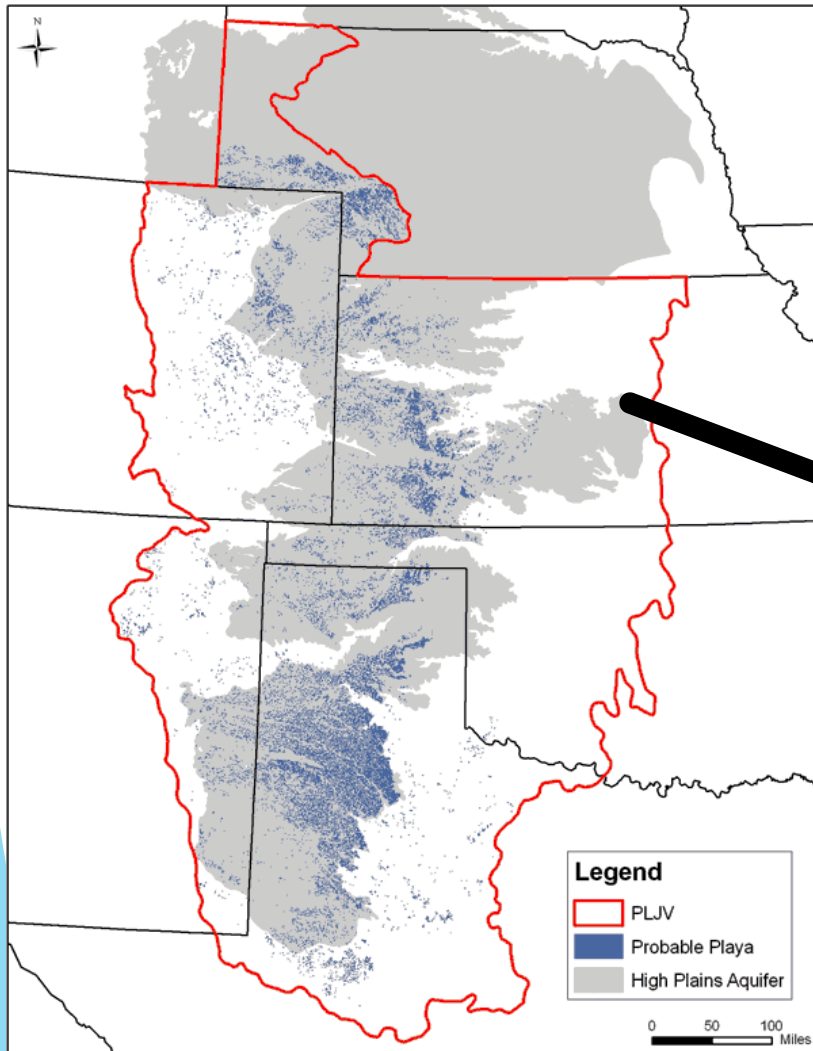


Why is DU interested in  
Western KS?

**PLAYAS!!!**

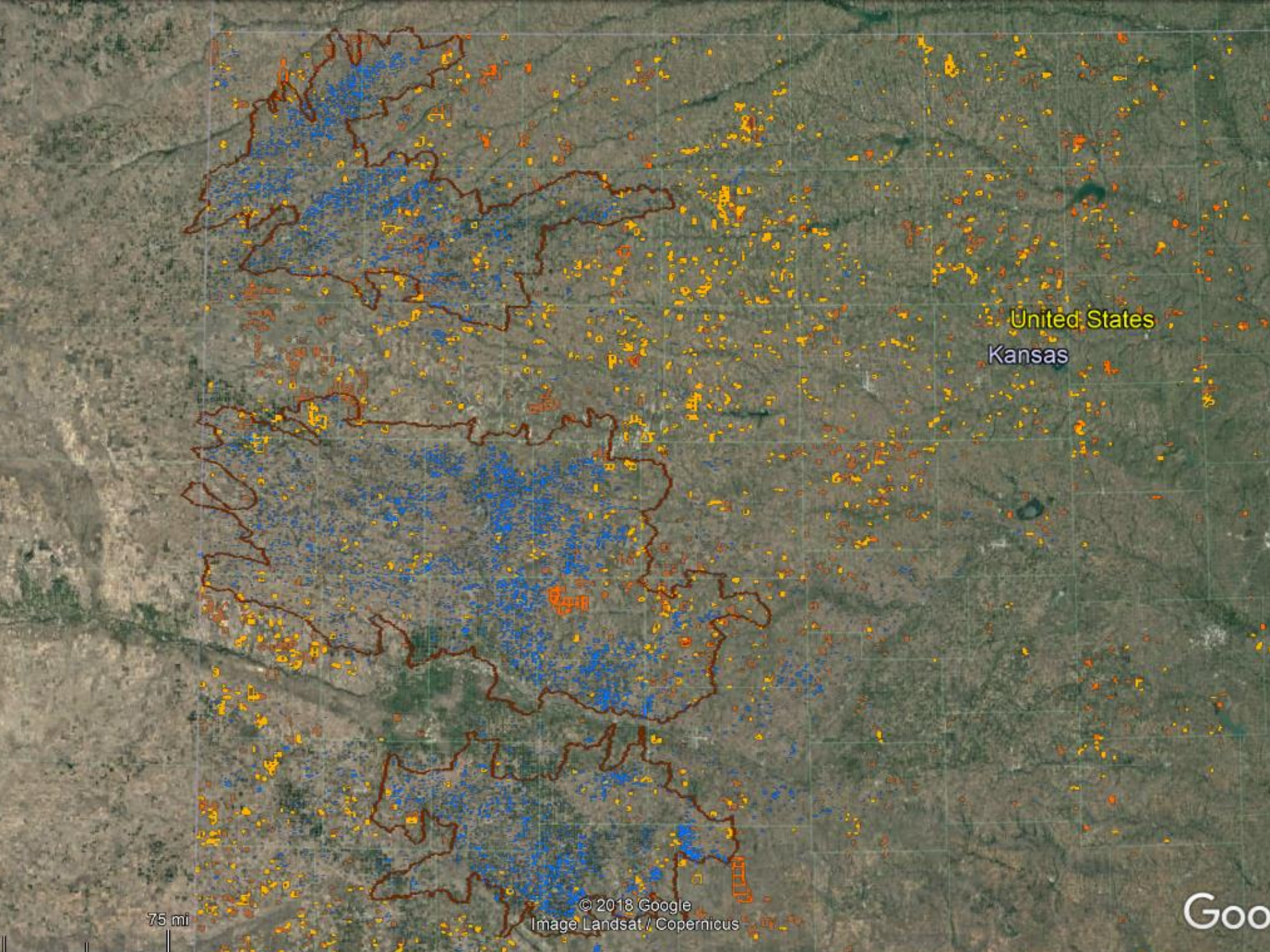
- ▶ Shallow, Ephemeral, “Food Rich” Wetlands that provide ducks a place to stop, refuel, and rest to maintain good physical condition during spring migration
- ▶ These habitats also benefit other wildlife and people

# KS Playa Locations



80,000 Nationwide, 20,000 in Kansas

Courtesy of PLJV

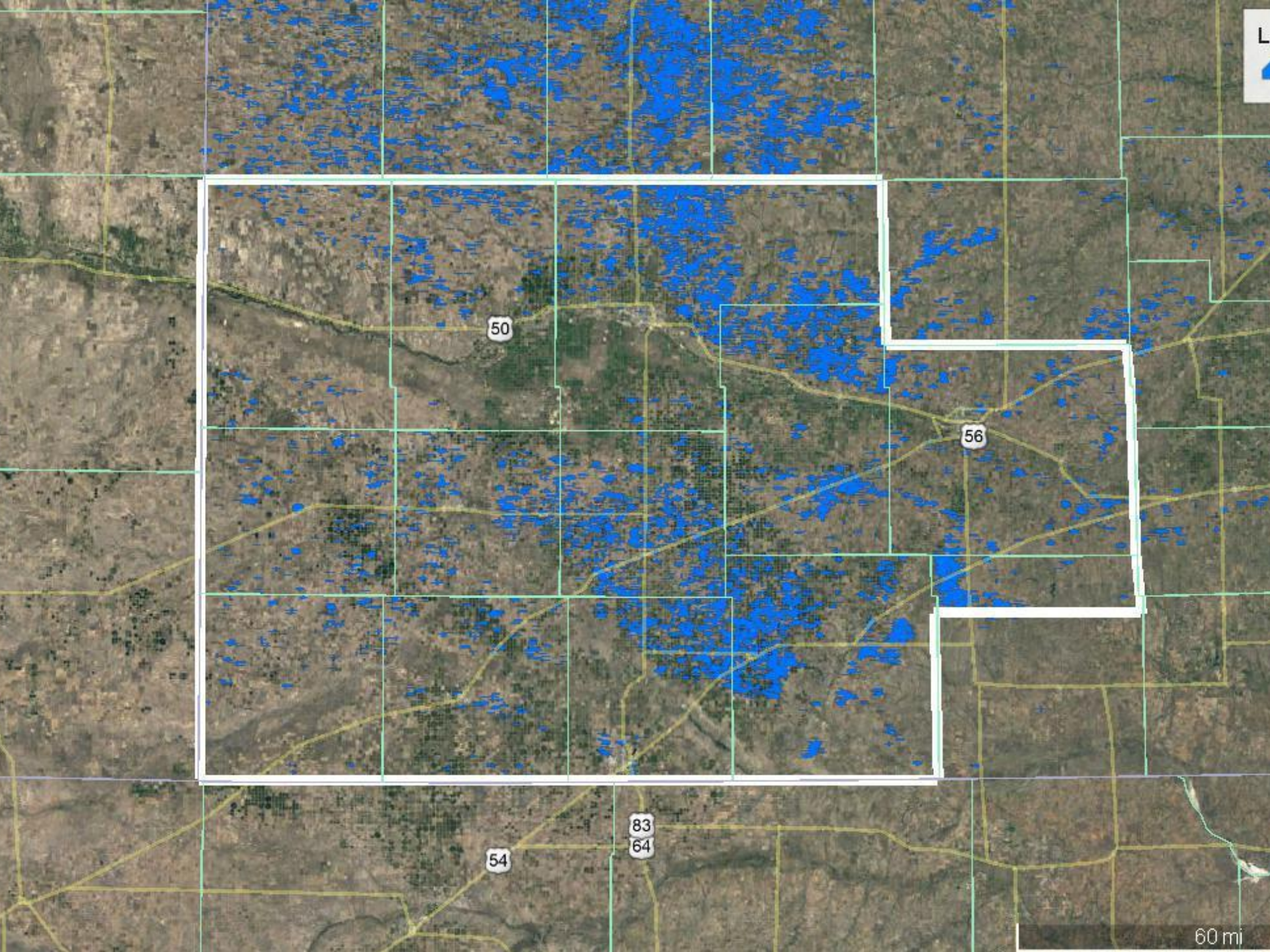


United States  
Kansas

75 mi

© 2018 Google  
Image Landsat / Copernicus

Go



50

56

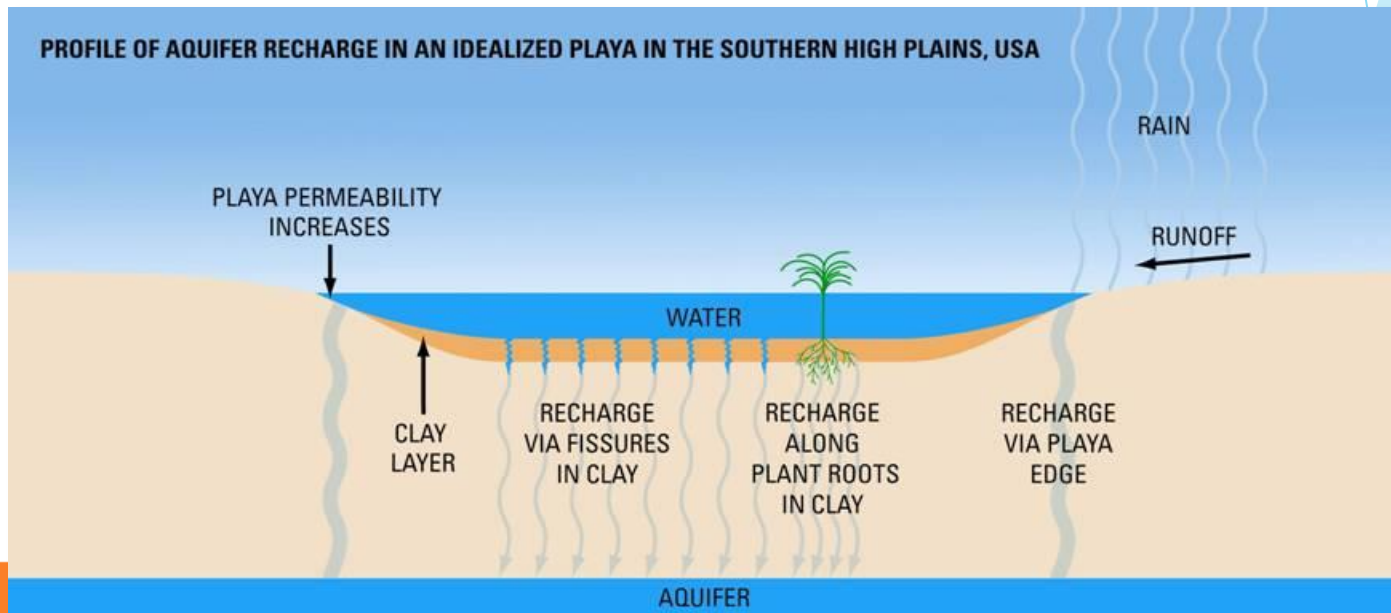
54

83  
64

60 mi

# What does this mean to DU and our mission statement

- ▶ Total # playas: 1,770 playas
- ▶ Total playa acres: 20,818 ac
  - ▶ Average size: 12 ac
- ▶ Acre-feet of potential infiltration : 5,204 acre-feet/year
  - ▶ 1,695,739,012 gallons
  - ▶ 325,000 gallons, enough for a family of four for a couple years





# What can Ducks Unlimited Provide?

- ▶ Conservation Easements and Acquisitions
- ▶ Engineering Services
- ▶ Wetland Construction Delivery
- ▶ Cost Share
- ▶ Technical Assistance



# Conservation Easements

- ▶ Working Lands Easements
  - ▶ Permanent
  - ▶ Based on difference in appraised value
  - ▶ Flexible terms
    - ▶ No wetland drainage
    - ▶ No development
    - ▶ Grazing any time
    - ▶ Haying after July 15
    - ▶ Can include continued cropping
  - ▶ Requires cost share
    - ▶ Can be donated value or cash
    - ▶ Tax deductible (501c3)
    - ▶ Can be covered under USDA ALE program



# RCPP Regional Conservation Partnership Program



United States  
Department of  
Agriculture

Natural Resources Conservation Service

- ▶ New USDA grant adding additional \$\$\$ for playa easements
  - ▶ Alternative pot of funding for WRE projects
  - ▶ Ranking based on various factors including waterfowl habitat potential
  - ▶ Increased flexibility and specially designated for playas\*
  - ▶ Separate funding source from general WRE but similar

\*Limited funds so this will be based on a first-come, first-serve basis as well as ranking criteria.

# Acquisitions and Land Trades

- ▶ Interested in acquisition of wetlands for protection or public ownership
- ▶ DU protects and restores the property and sells it back into private ownership as working ranch property
- ▶ Can assist establishing new Wildlife Areas with KDWPT
  - ▶ “Jones Family Public Hunting Area”
- ▶ Gifts of Property and Estate Planning
  - ▶ Tax benefits
  - ▶ 1031 exchange
  - ▶ Partial/full donation
  - ▶ Retained life estate
  - ▶ Get rewarded now and leave a legacy



# What can Ducks Unlimited Provide?

- ▶ Conservation Easements and Acquisitions
- ▶ Engineering Services
- ▶ Wetland Construction Delivery
- ▶ Cost Share
- ▶ Technical Assistance



# Ducks Unlimited Cost share Programs

- ▶ DU and our partners have restoration funds in hand.
  - ▶ Cost share on restoration
    - ▶ Cost share on dirt work, grass seed, planting, and some maintenance.
      - ▶ Can work on CRP or other options
        - ▶ Can work outside of usda programs that is within the playa watershed
      - ▶ Grazing would remain an option for income
    - ▶ You still own the property; public access not necessary, but DU would like to see it in public access





## MEET YOUR WETLAND GOALS

WETLAND CONSERVATION PROGRAMS FOR PRIVATE LANDOWNERS IN KANSAS

### HABITAT DELIVERY PROGRAMS

#### WETLAND AND UPLAND COST-SHARE OPPORTUNITIES\*

Ducks Unlimited can provide financial assistance for new wetland projects or conservation programs via the following:

- Levee/berm installation
- Sediment removal
- Terrace removal
- Grass/buffer plantings
- Tree cutting
- Invasive control and vegetation management
- Wetland pumping and irrigation equipment
- Other ideas? Call us!
- Water control structures
- Pit fills & ditch plugs
- Culvert install/replacement
- Fence and livestock water
- Pivot upgrades (VRI and tracks)

\*Cost-share opportunities vary by region, project type, and funding availability, so please contact DU for more information. Out of pocket expenses may apply.

#### TECHNICAL ASSISTANCE

DU's team of biologists and engineers can assist you with designing and developing your wetland habitat to maximize benefits to waterfowl across the seasons. We can assist you in navigating:

- Wetland development and design
- Management recommendations
- USDA/federal programs
- State and local programs
- Public access programs
- Wetland permitting and mitigation
- Wetland contractor contacts

### LAND PROTECTION PROGRAMS

#### CONSERVATION EASEMENTS

Are you interested in protecting your property's conservation values in perpetuity? DU can assist you with the various protection options available, including DU easements that will ensure your conservation legacy is secured forever.

#### LAND ACQUISITION

Are you interested in selling or donating your property? DU can assist you with options to establish a new public-use area, sell to a conservation buyer, donate your tract to aid conservation, or include your land as a planned gift in your estate to maximize benefits to wildlife conservation, as well as provide financial and tax benefits to you now and your loved ones later.

[WWW.DUCKS.ORG/KANSAS](http://WWW.DUCKS.ORG/KANSAS)

Abram Lollar • Biologist • Garden City, KS  
620-214-2963 or [alollar@ducks.org](mailto:alollar@ducks.org)

# Wetland Improvement Cost Share

- ▶ Pit fills
- ▶ Grass planting
- ▶ Fence
- ▶ Livestock water
- ▶ Tree cutting
- ▶ Invasive control and vegetation management
- ▶ Wetland-friendly pivot upgrades (VRI and tracks)
- ▶ Culvert install/replacement
- ▶ Sediment and road removal
- ▶ Levee installation
- ▶ Water control structures









**WETLANDS  
RESERVE  
PROGRAM**

---

**CONSERVATION  
EASEMENT  
BOUNDARY**

---

**LANDOWNER &  
USDA / NRCS  
PARTNERSHIP**











# Ducks Unlimited Cost share Programs

- ▶ DU and our partners restoration funds already in hand.
  - ▶ Cost share on restoration
    - ▶ Cost share on dirt work, grass seed, planting, and some maintenance.
      - ▶ Can work on CRP or other options
      - ▶ Grazing would remain an option for income
    - ▶ You still own the property; public access not necessary, but DU would like to see it in public access
- ▶ Cost sharing on wetland restorations over 650 wetland acres and 1500 upland acres (seed cost, sediment removal, planting, and other practices)
- ▶ Additional 900 wetland acres and 2600 upland acres in process
- ▶ Totaling over 1550 wetland acres and 4100 upland acres and growing.



# What can Ducks Unlimited Provide?

- ▶ Conservation Easements and Acquisitions
- ▶ Engineering Services
- ▶ Wetland Construction Delivery
- ▶ Cost Share
- ▶ Technical Assistance



# Technical assistance

- ▶ Wetland development and design
- ▶ Management recommendation
- ▶ USDA/federal programs
- ▶ State and local program
- ▶ Public access
- ▶ Wetland permitting and mitigation
- ▶ Wetland contractor contacts
- ▶ Vegetation management plans
- ▶ Wildlife habitat improvement ideas
- ▶ On ground work













WIHA  
WALK-IN HUNTING ACCESS  
NOV. 1 - JAN. 31  
FOOT TRAFFIC ONLY

WIHA  
WALK-IN HUNTING AREA  
FOOT TRAFFIC ONLY  
Area open Nov. 1 through Jan. 31

3110



**WIHA**  
WALK-IN  
HUNTING AREA  
FOOT TRAFFIC  
ONLY  
Area open Sept. 1 through Jan. 31



# New and Future Directions

- ▶ Grants and match
  - ▶ Applying for additional playa restoration dollars
- ▶ Community outreach
  - ▶ Water quantity - work to create sustainability for imperiled communities through increased aquifer recharge
  - ▶ Water quality - work to improve water quality in areas of high nitrate concentrations
- ▶ Continue to work with partners and promotion of playa programs
  - ▶ Continue to give technical assistance
- ▶ Corporate donations and mitigation opportunities
  - ▶ Wind, oil, gas, agriculture and others
- ▶ Easements
  - ▶ Pursue donated easements for increased match and conservation delivery
- ▶ Acquisitions
  - ▶ Assist KDWPT with acquiring playas for new Wildlife Areas for increased public access, protection, and management





