

MARAIS DES CYGNES RAC MEETING

JULY 20, 2023- AG CHOICE, OSAGE CITY



AGENDA DETAILS

- I. Welcome**
- II. Roll call – Lyle Wobker (Chair & Agriculture 2)**
- III. Approve Agenda**
- IV. Approval of May 2023 RAC Meeting Notes**
- V. Updates – KWO**
 - a. June KWA meeting**
 - b. KRPI**
 - c. Education and Outreach**
- VI. FY2025 Budget Discussion – KWO**
- VII. RAC Goals Implementation Timeline – KWO**
- VIII. RAC Messages to KWA**
- IX. Questions and Future Issues from RAC Members**
- X. Educational events within the region**
- XI. Agency Input**
- XII. Public Input**
- XIII. Adjournment**

Future Meetings

- a. KWA – August 23, 2023 – Location and time TBD**
- b. Fall RAC meeting – Date TBD**

Kansas Reservoir Protection Initiative

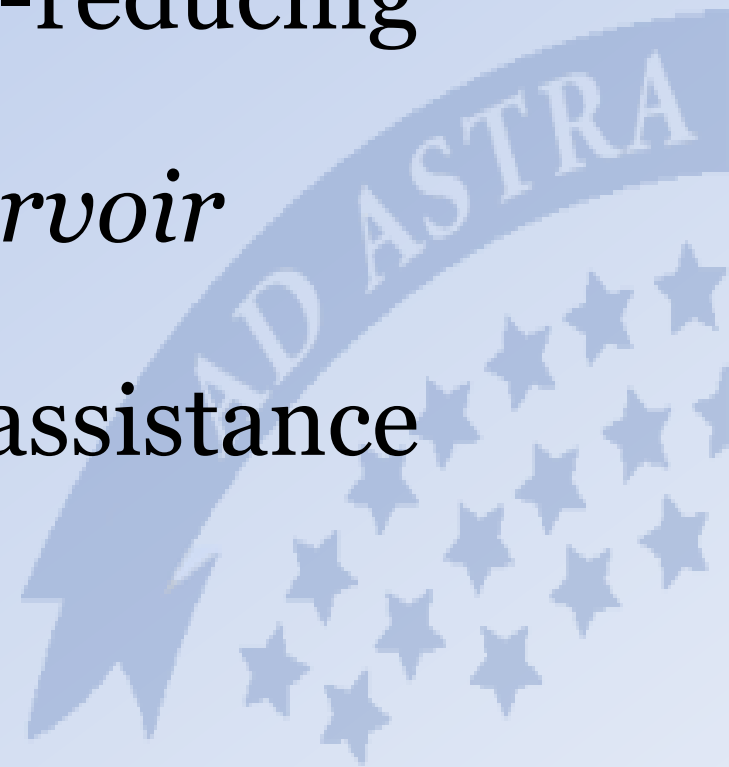
Marais des Cygnes RAC Discussion

7/20/2023



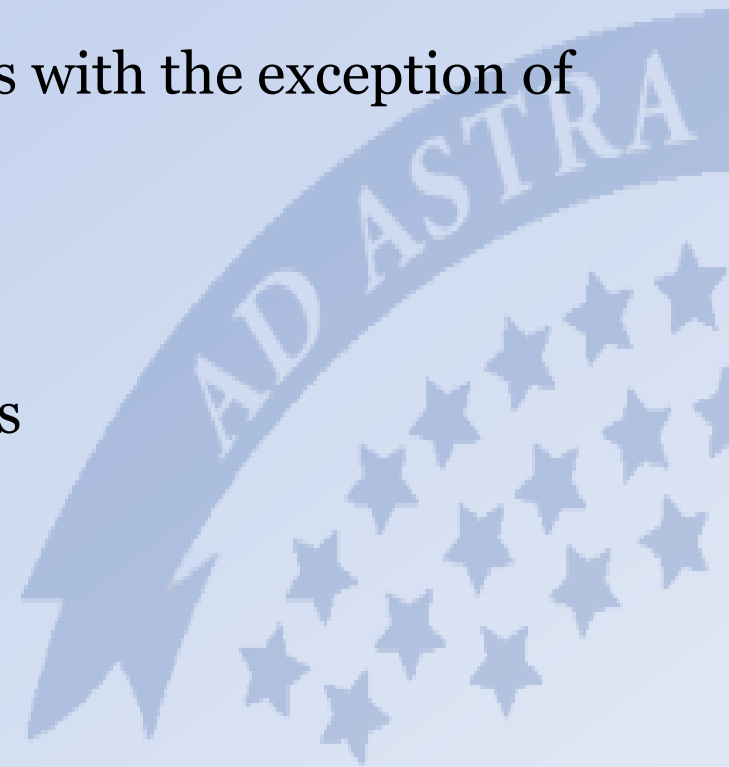
What is the Kansas Reservoir Protection Initiative?

- State Water Plan Fund program to provide financial assistance to producers within priority watersheds to implement sediment-reducing conservation practices
 - *Focus: reducing reservoir sedimentation rates*
- Result-based financial assistance model



Program Payment Structure

- \$50/ton of Sediment Reduced by Practice Installed
 - (Load reductions calculated from KDHE Statewide Region 5 Model)
 - Payment rate applies to all practices with the exception of cover crops
- Cover Crop Incentive Payments:
 - \$45/acre – first year participants
 - \$30/acre – second year participants
 - \$15/acre – third year participants



Available Funding

- ❑ Current DOC carryforward from previous signups
 - ~\$500,000
- ❑ SWPF FY 2024 Watershed Conservation Practice Implementation Appropriation
 - \$1,000,000

Participating Watersheds

❑ PREVIOUS YEAR WATERSHEDS

- Fall River
- Kanopolis
- John Redmond
- Tuttle Creek

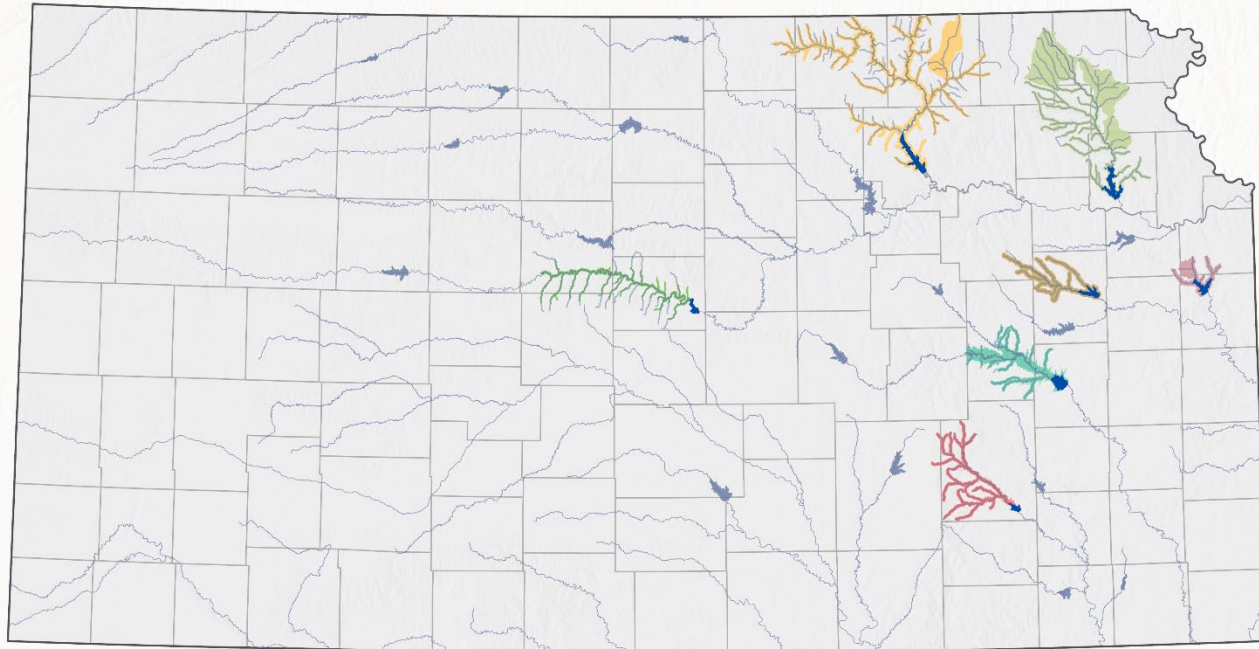
❑ NEW WATERSHEDS

- Hillsdale
- Perry
- Pomona



Participating Watersheds

Kansas Reservoir Protection Initiative Priority Implementation Areas



Priority Areas

Fall River Lake

John Redmond Reservoir Priority Area

Kanopolis Lake Priority Area

Hillsdale Lake Priority Area

Perry Lake Priority Area

Pomona Lake Priority Area

Tuttle Creek Lake Priority Area

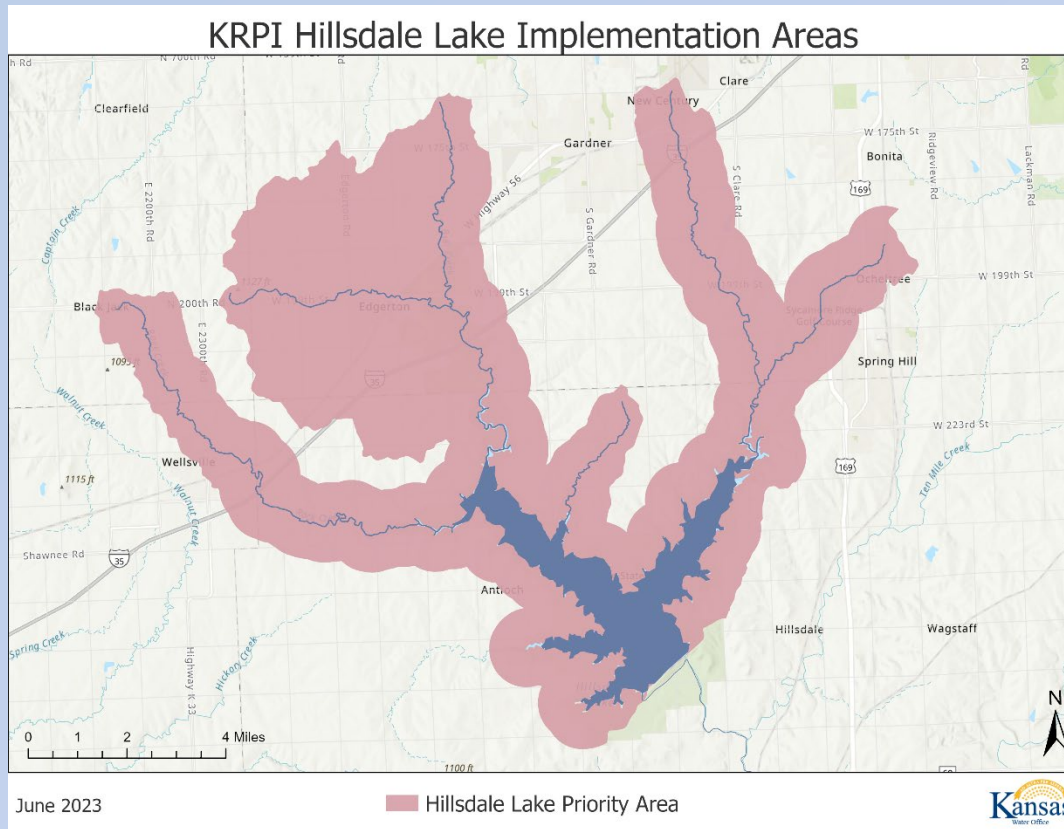
KRPI Targeted Reservoirs

Federal Lakes

June 2023

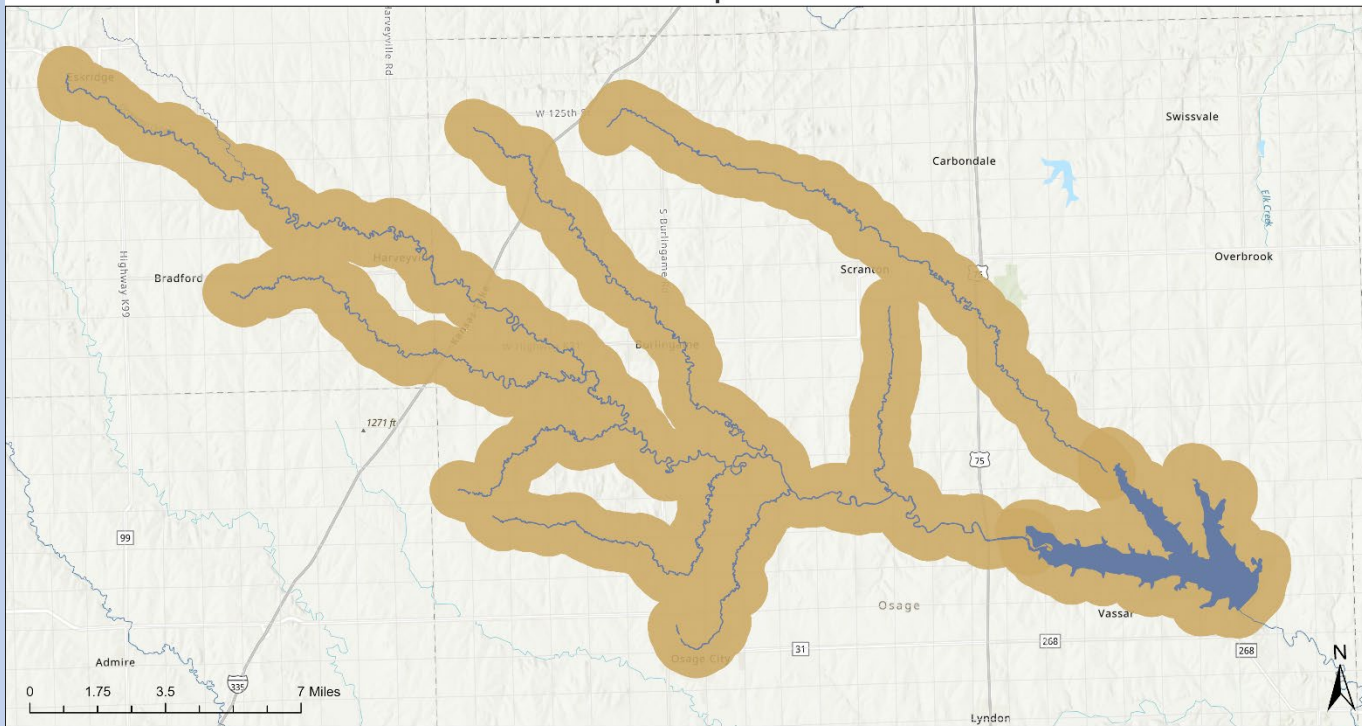


Participating Watersheds



Participating Watersheds

KRPI Pomona Lake Implementation Areas



June 2023

■ Pomona Lake Priority Area

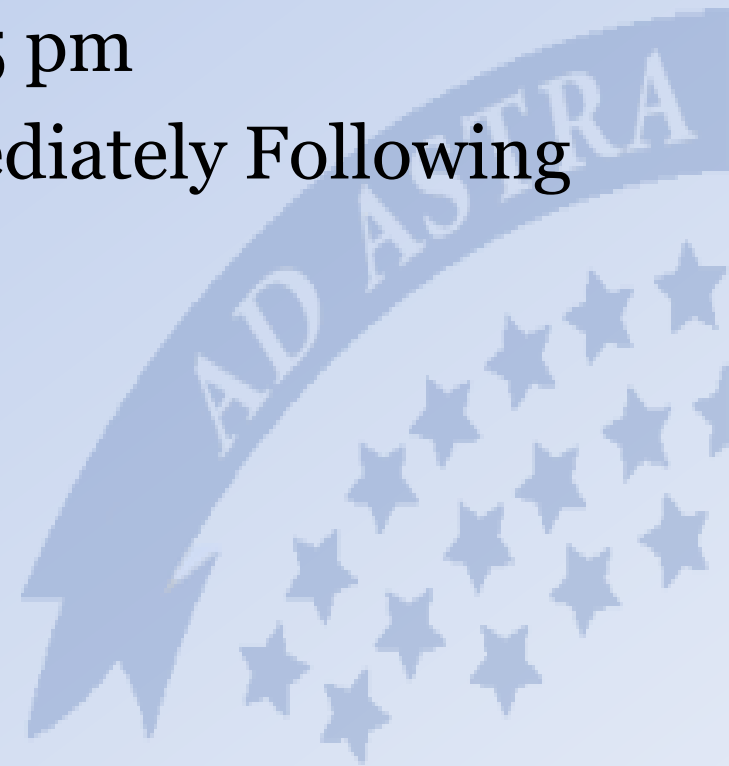


Eligible Practices

Practice Name	Practice Code	Notes
Conservation Crop Rotation	328	Not eligible for Irrigated to Dryland Rotation Organic and Non-Organic
Constructed Wetland	656	
Contour Buffer Strips	332	
Contour Farming	330	
Cover Crop	340	
Critical Area Planting	342	
Dike	356	
Diversion	362	
Field Border	386	
Filter Strip	393	
Forage and Biomass Planting	512	
Grade Stabilization Structure	410	
Grassed Waterway	412	
Land Smoothing	446	
Lined Waterway or Outlet	468	
Mulching	484	
Range Planting	550	
Residue and Tillage Management, No-Till	329	
Residue and Tillage Management, Reduced Till	345	
Riparian Forest Buffer	391	
Sediment Basin	350	
Structure for Water Control	587	
Subsurface Drain	606	
Terrace	600	
Tree/Shrub Establishment	612	
Tree/Shrub Site Preparation	490	
Underground Outlet	620	
Water and Sediment Control Basin	638	
Wetland Creation	658	
Wetland Enhancement	659	
Wetland Restoration	657	
Wetland Wildlife Habitat Management	644	

Program Dates (Discussion)

- Application Period Began: 6/26
- Application Period Ends: 7/21
- Application Review Date: 7/25 pm
- Applicant Notifications: Immediately Following Application Review



State Water Plan Fund FY 2025 Priorities

Conserve and Extend the High Plains Aquifer

- Improve our understanding of the aquifer and all its characteristics
- Improve the efficiency of our use of High Plains water for all water users
- Reduce the amount of water that is pumped from the aquifer
- Use state resources to leverage local, federal and private funding

Secure, Protect, and Restore our Kansas Reservoirs

- Ensure that Kansas has full access to reservoir storage needed to meet projected demands
- Improve our understanding of sediment inflows and deposition of sediment in reservoir storage
- Reduce the amount of sediment that is entering reservoir storage
- Manage and/or remove sediment once it has entered the reservoir
- Use state resources to leverage local, federal and private funding

Improve the State's Water Quality

- Monitor surface and groundwater quality conditions for program management/decision making, define emerging issues and document successful improvements
- Establish and implement long term strategies to improve and restore water quality, including protecting source water, improving aquatic habitat, and recreational use, through appropriate treatment control of point and nonpoint sources
- Clean up soil, groundwater, and surface waters contaminated by past industrial and commercial activities
- Use state resources to leverage local, federal and private funding

Reduce our Vulnerability to Extreme Events

- Improve our understanding of the timing, frequency, and impact of extreme events
- Reduce flood damage through mitigation and control
- Reduce economic damage and water supply vulnerability due to drought
- Use state resources to leverage local, federal and private funding

Increase Awareness of Kansas Water Resources

- Improve coordination and access of information available to stakeholders and the public
- Establish an integrated knowledge base for water quantity, quality and use data for education, science & engineering, and decision making
- Provide general and targeted land and water conservation information and education
- Use state resources to leverage local, federal and private funding

ATTACHMENT 2

SWPF FY 2025 Regional Advisory Committee Budget Input

Recent Progress/Success

- Has there been progress of note on regional and/or statewide water resource issues which should be highlighted?

State Water Plan Fund Priorities

- What type of activities would be most impactful under any/all of the 5 KWP Guiding Principles and/or noted actionable items?
- What type of activities would be of highest priority under any/all of the 5 KWP Guiding Principles and/or noted actionable items?
- What do you feel is an appropriate proportional level of funding to go towards each of the 5 Kansas Water Plan Guiding Principles?
- Where do you feel current priority activities would best fit within the 5 KWP Guiding Principles and/or noted actionable items?
- Are there opportunities for “low hanging” issues or priorities to be addressed?
- Are there urgent emerging issues/priorities or unique opportunities to be addressed?
- Are there any activities you feel are missing at the current time which should be considered for future SWPF expenditures?

AGENDA DETAILS

- I. Welcome**
- II. Roll call – Lyle Wobker (Chair & Agriculture 2)**
- III. Approve Agenda**
- IV. Approval of May 2023 RAC Meeting Notes**
- V. Updates – KWO**
 - a. June KWA meeting**
 - b. KRPI**
 - c. Education and Outreach**
- VI. FY2025 Budget Discussion – KWO**
- VII. RAC Goals Implementation Timeline – KWO**
- VIII. RAC Messages to KWA**
- IX. Questions and Future Issues from RAC Members**
- X. Educational events within the region**
- XI. Agency Input**
- XII. Public Input**
- XIII. Adjournment**

Future Meetings

- a. KWA – August 23, 2023 – Location and time TBD**
- b. Fall RAC meeting – Date TBD**

Wildlife Habitat and Soil Health Management Field Day



Using the principles of soil health to build relationships between
wildlife habitat and production agriculture.

Hosted By
Darin Williams

D&N Ag Farms and
Winner of the 2022/2023
Buckmaster Deer of the Year

