

Regional Advisory Committees (RACs)

*An Overview/Refresher on RAC Role in
State Water Resource Planning Efforts*

November 29, 2021

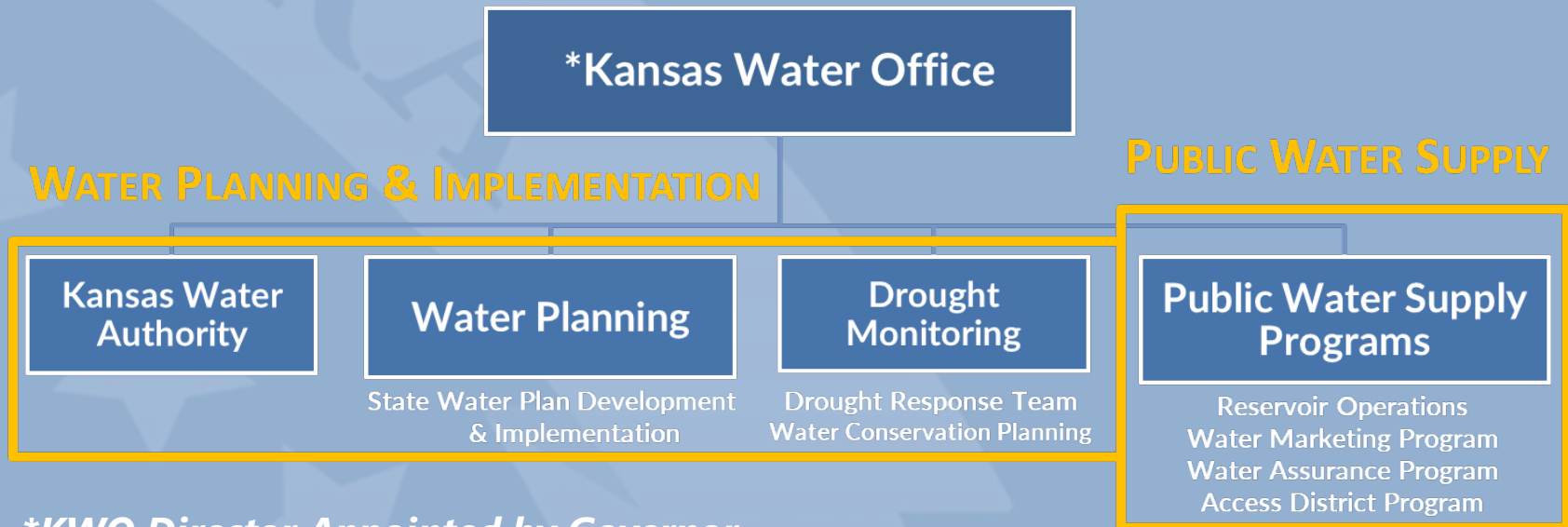


Partner Agency Acronyms

- DOC – Department of Conservation (under KDA)
- DWR – Department of Water Resources (under KDA)
- EPA – Environmental Protection Agency
- GMD – Groundwater Management District
- KBS – Kansas Biological Survey
- KDA – Kansas Department of Agriculture
- KDHE – Kansas Department of Health & Environment
- KDWP – Kansas Department Wildlife & Parks
- KGS – Kansas Geological Survey
- List of other acronyms may be found in the [Kansas Water Plan](#)

Who's Who?

- Kansas Water Authority (KWA)
- Kansas Water Office (KWO)
- Regional Advisory Committees (RACs)



****KWO Director Appointed by Governor***

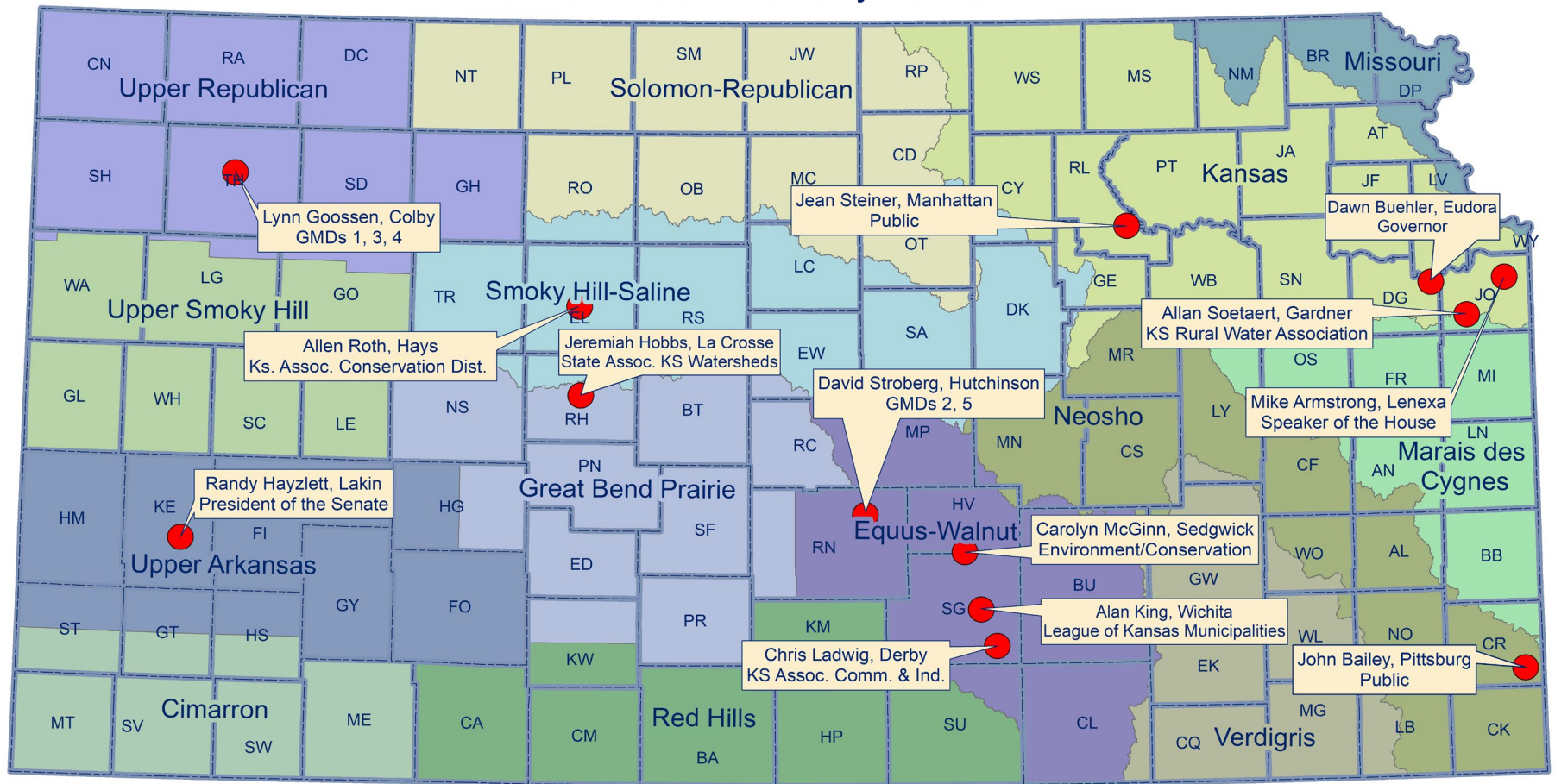
The Kansas Water Authority (KWA)

- **Meetings**
 - vary locations (except Jan. Topeka)
 - January, Apr/May, July/Aug, October, December *typically*
 - Agenda consists of Sub-Committee reports, action and informational items
 - Chairs or designee are encouraged to attend (especially if in the area)
- **KWA Subcommittees**

Committee membership is determined by the KWA Chair

 - Public Water Supply Committee
 - Budget Committee
 - RAC Operations Committee
 - 2 RAC members will serve on this committee

Kansas Water Authority Members



Kansas Water Office
January 2021

Kansas Water Authority Ex Officio Members

Earl Lewis
Division of Water Resources
KS Dept. of Agriculture

Ernie Minton
Ag Experiment Station
KS State University

Andrew Lyon
Division of Conservation
KS Dept. of Agriculture

Leo Henning
KS Dept. of Health & Environment

Brad Loveless
KS Dept. Wildlife, Parks & Tourism

David Toland
KS Dept. of Commerce

Sara Baer
KS Biological Survey

Rolfe Mandel
KS Geological Survey

Mike Beam
KS Dept. of Agriculture

Connie Owen
KS Water Office

Andrew French
KS Corporation Commission

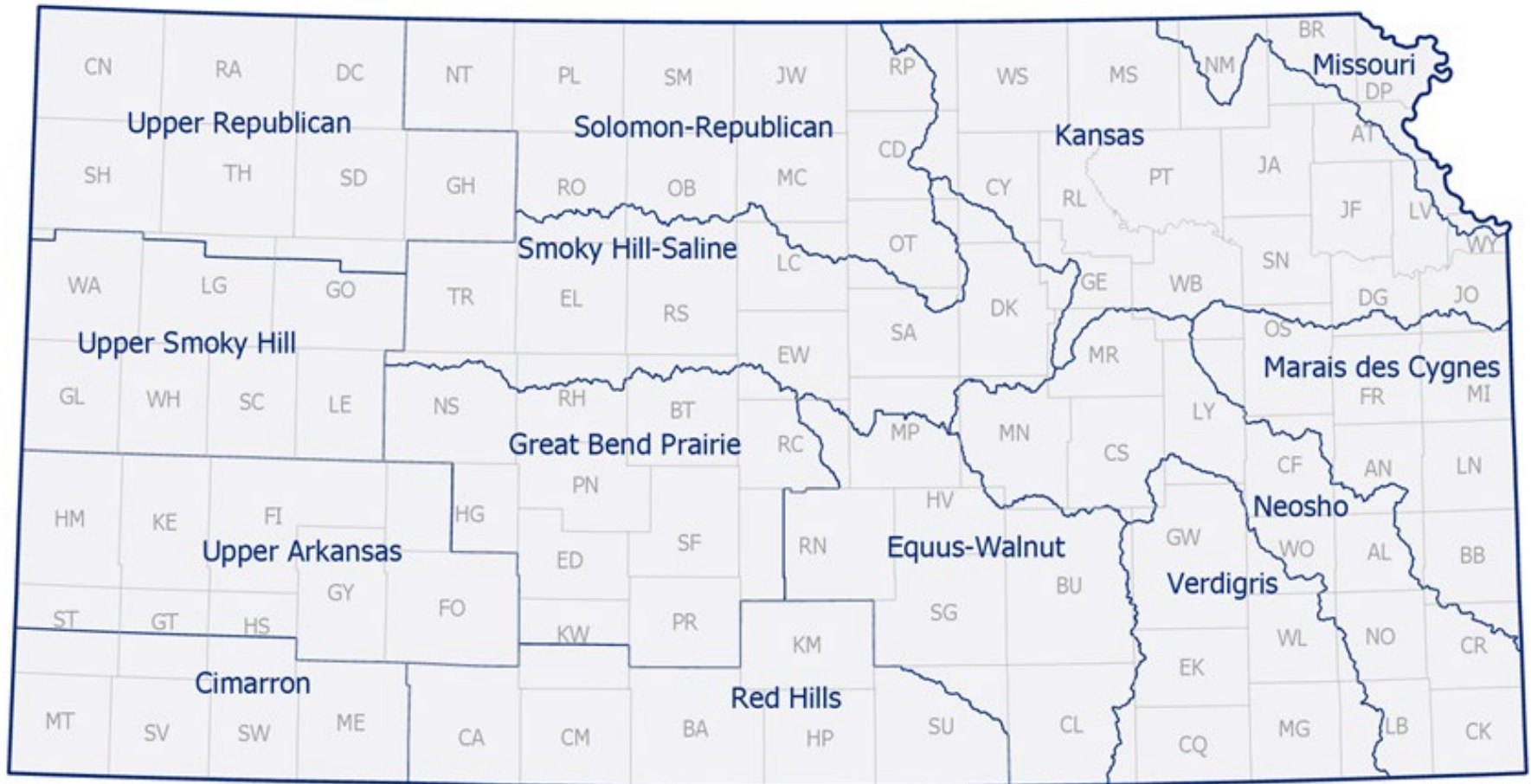
The Kansas Water Office (KWO)

- Water planning, policy, coordination and marketing agency for the state per K.S.A. 74-2608
- Primary statutory function is the development and implementation of the *KWP*
- Designated state agency responsible for overall management of the SWPF
- As defined in Kansas Statute 74-2608:
 - Collect and compile information pertaining to climate, water and soil as related to the usage of water for agricultural, industrial and municipal purposes and the availability of water supplies in the several watersheds of the state;
 - Develop a state plan of water resources management, conservation and development for water planning areas;
 - Develop and maintain guidelines for water conservation plans and practices; and
 - Shall establish guidelines as to when conditions indicative of drought exist



KWO Staff Introductions





Regional Planning Areas & Regional Advisory Committees

Guidance for RAC Operations

Memorandum of Internal Policy

- RAC members serve a term of 4 years
 - Terms are staggered
- Each RAC has Core Categories (cc)
 - Agriculture
 - At Large Public
 - Conservation/Environment
 - Industry/Commerce
 - PWS
- Remainder of RAC made up of water use/interest categories specific to regions. Examples of region-specific categories include:
 - WRAPS
 - Planning & Zoning
 - Irrigation
 - GMD
 - Water Assurance District
 - Ranching/Grazing
 - Fish & Wildlife
 - Public Utility

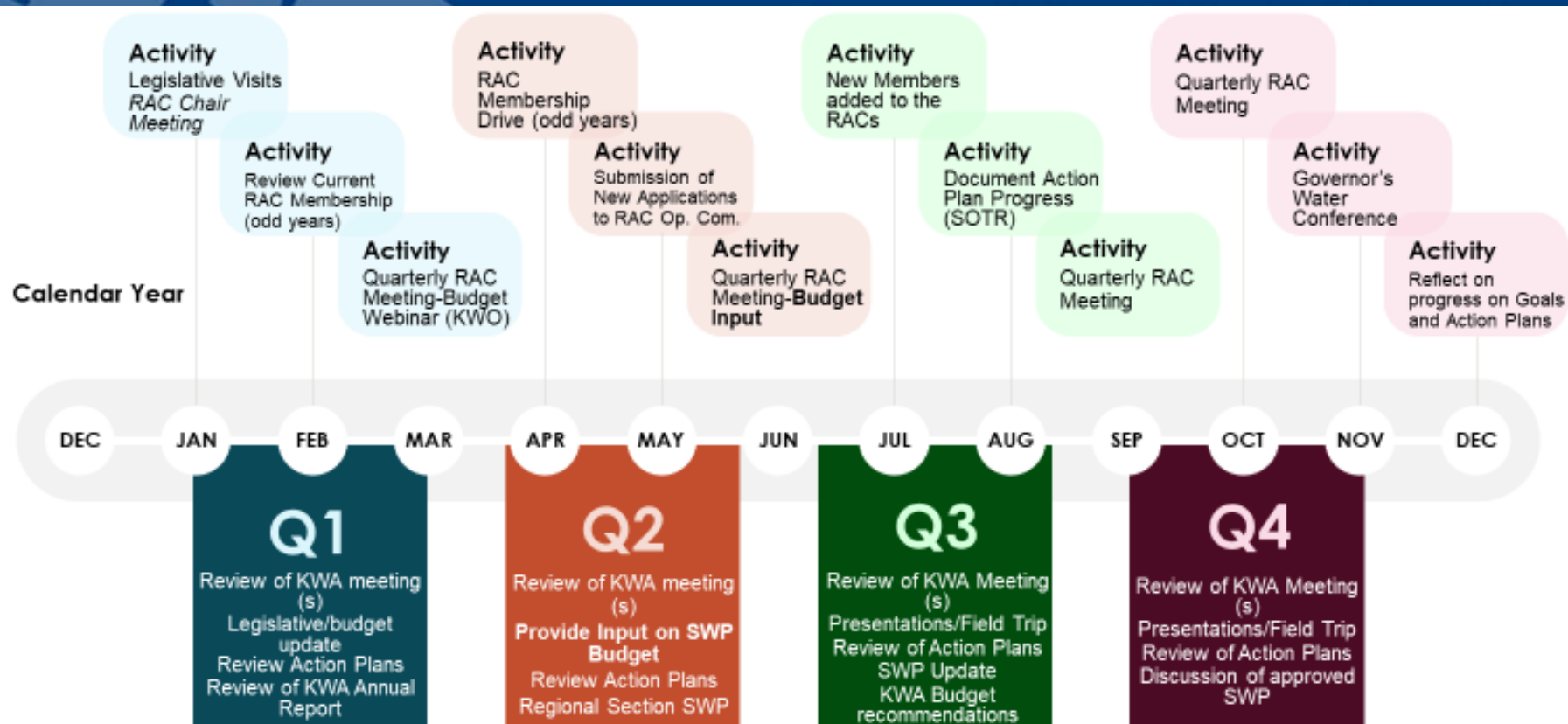
Purpose of the RACs

- **Advise KWO & KWA...**
 - ...in identifying water-related issues within their region
 - ...in the formulation of revisions to the section of the *KWP* corresponding to their region
 - ...regarding *KWP* implementation priorities & actions
 - ...on issues under consideration for inclusion in the *KWP* (IPM-04, Revised August 20, 2015)
- **Serve as a link to the public:**
 - Interaction with various groups & individuals
 - Communicate information on concerns & issues to citizens
- **Serve as a link to water management entities:**
 - Facilitate discussion & input on issue development & implementation

Role of RACs

- Eyes & Ears for the KWA & KWO
- Ambassadors & solicitors of public input
 - Messenger of the KWP & RAC actions to ensure future water supply needs are met in region(s)
- Advise, guide, & sometimes lead through action on implementation of goals

RAC Typical Annual Timeline



Typical RAC Meeting Agenda



NEOSHO

REGIONAL ADVISORY COMMITTEE

MEETING AGENDA

DATE: July 28, 2021
TIME: 1:00 p.m.
LOCATION: Please join the meeting from your computer, tablet or smartphone.
<https://global.gotomeeting.com/join/258289333>

You can also dial in using your phone.
United States: [+1 \(872\) 240-3412](tel:+18722403412)

Access Code: 258-289-333

Join from a video-conferencing room or system.
Dial in or type: 67.217.95.2 or
inroomlink.goto.com
Meeting ID: 258 289 333
Or dial directly: 258289333@67.217.95.2 or
67.217.95.2##258289333

AGENDA DETAILS

- I. Welcome
- II. Roll call – Jay Byers (Chair & At-Large Public) (5 mins)
- III. Approve Agenda
- IV. Review of April RAC Meeting Notes (5 mins)
- V. June KWA Meetings Review/Discussion – Angela Anderson and other KWO Staff (10 mins)
- VI. State Water Plan Fund Budget Discussion & RAC Recommendation – Cara Hendricks (KWO)
- VII. Update on Kansas Water Plan process (10 minutes) – Angela Anderson (KWO)
- VIII. RAC Membership update (5 mins)
- IX. Questions and Future Issues from RAC Members (10 mins)
- X. Agency Input (10 mins)
- XI. Public Input (10 mins)
- XII. Adjournment

Future Meetings

- a. KWA – Tuesday, August 17th, 8:00am-4pm, Garden City
- b. Governor's Conference on the Future of Water in Kansas – November 17-18th, Manhattan



KWA & RAC Coordination

- KWA Committee on RAC Operations
 - Will review any feedback that is forwarded to the KWA from the RACs
 - Will assist in vetting membership
 - Will assist in address RAC messages
 - Provides recommendations to full KWA on actions and responses on RAC membership and RAC messages to the KWA
 - Includes two members of RACs serving as advisors to the KWA Committee on RAC Operations

Kansas Water Plan (*KWP*) Coordination

- *KWP* is used by the state of Kansas to coordinate the management, conservation, & development of water resources of Kansas
- Contains recommendations on how the state can best achieve proper use & control of water resources
- *KWP* implementation may be through legislation, funding, or focus on existing agency(ies)'s programs.

Regional Planning Areas and KWO Planners



How to Stay Connected

- Actively participate in RAC meetings
- Visit KWO events calendar often

<https://kwo.ks.gov/news-events/calendar>

- Attend KWA Meetings (especially if in your area/virtual)
- Facebook, Twitter, & Instagram
- Email: kwo-info@kwo.ks.gov or your planner's
- **KWO Website**
 - RAC Pages

Common Kansas Water Acronyms

- ANS – Aquatic Nuisance Species
- BMP – Best Management Practice
- EDIF – Economic Development Initiative Funds
- HAB – Harmful Algal Blooms
- IPM – Memorandum of Internal Policy
- KWA – Kansas Water Authority
- KWO – Kansas Water Office
- KWP – Kansas Water Plan
- NPS – Non-Point Source
- RAC – Regional Advisory Committee
- RCPP – Regional Conservation Partnership Program
- SGF – State General Fund
- SOTR – State of the Resources
- SWPF – State Water Plan Fund

- IDK – I don't know

Questions?

Thank you!

