

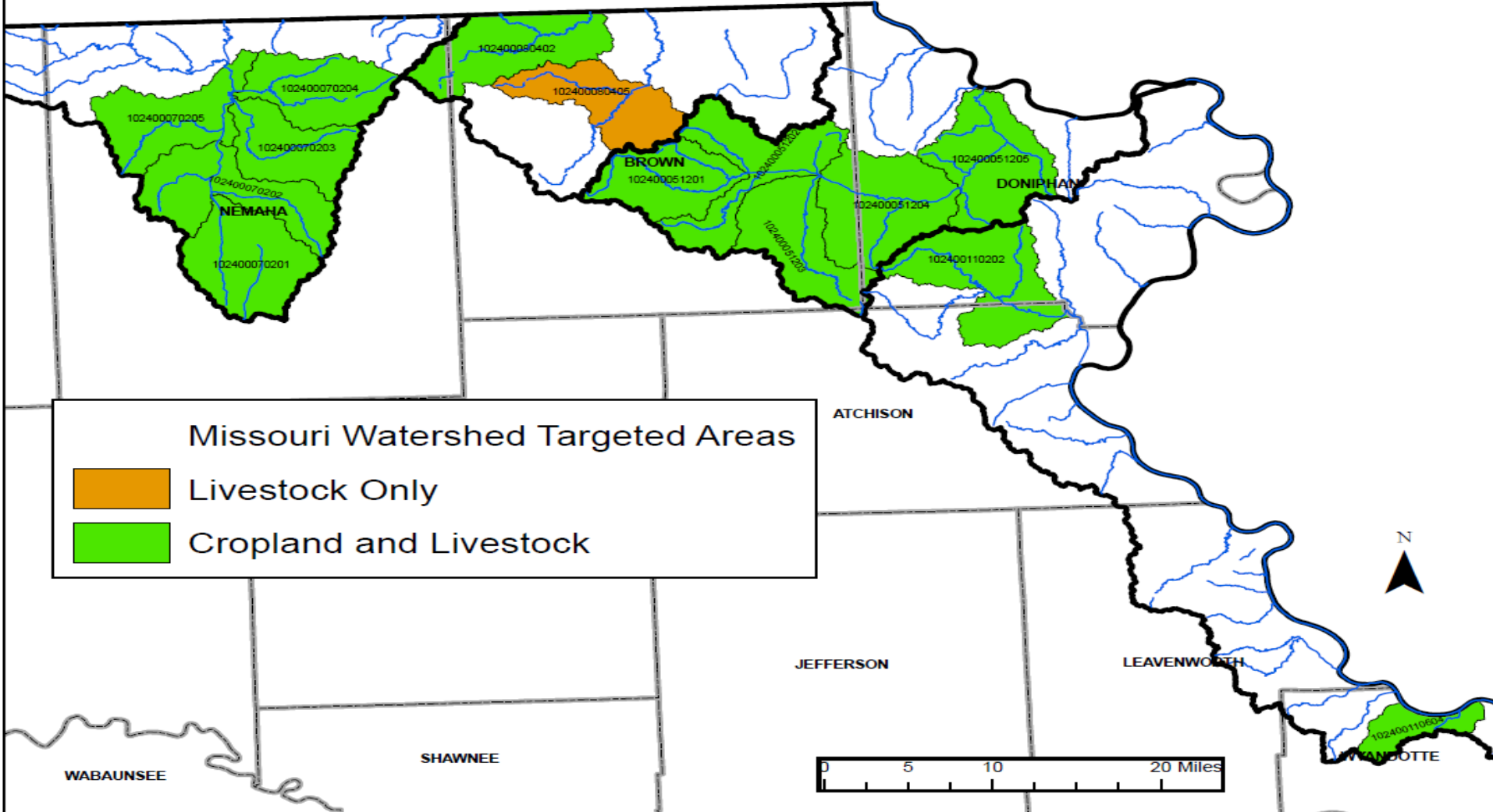


ANNUAL REPORT OF PROGRESS FOR THE MISSOURI WRAPS (2016)

- MISSOURI WRAPS TRIAD APPROACH TO COMBATING NPS POLLUTION:
 1. SUPPORT OF EDUCATION EVENTS AND WORKSHOPS
 2. PROVIDE TECHNICAL AND FINANCIAL ASSISTANCE TO LANDOWNERS
 3. COLLABORATE WITH PARTNER AGENCIES



Missouri Watershed Targeted Areas March 2018





-9- ELEMENT PLAN GOALS- ACHIEVE THE KS NON-POINT SOURCE POLLUTION MANAGEMENT PLAN BY MEETING TMDLS

Eutrophication TMDLs:

- Pony Creek Lake
- Wyandotte Co Lake

Biology/TSS TMDLs:

- S.F. Big Nemaha
- Wolf River
- Atchison Co Lake

Fecal Coliform Bacteria TMDLs:

- S.F. Big Nemaha
- Wolf River
- Walnut Creek



STATE AND FEDERAL BMP FUNDING IN WRAPS PRIORITY AREAS (STATEWIDE)

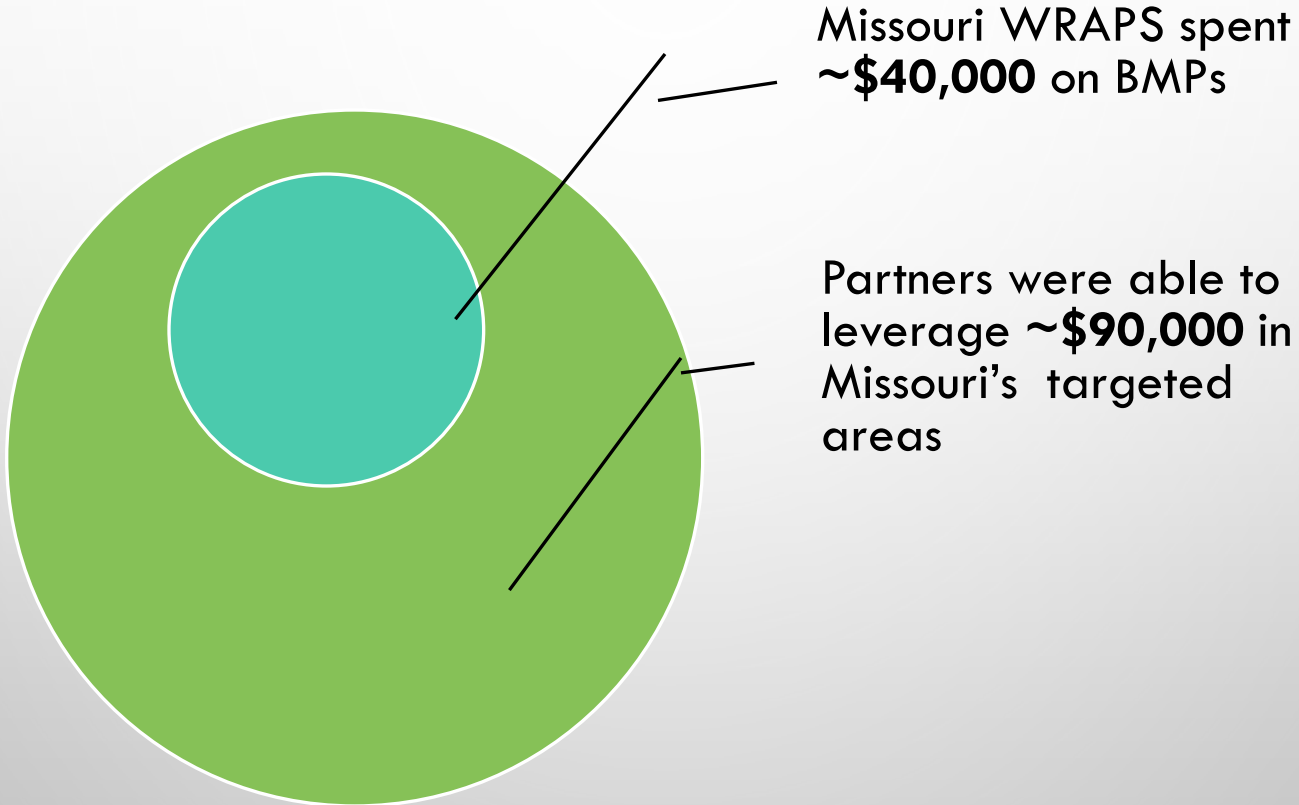
| Source | FY 2011-2015 Average | FY 2016 | Percent Change |
|--|----------------------|--------------------|----------------|
| KS Dept. Ag. Division of Conservation | \$963,345 | \$780,854 | |
| National Resource Conservation Service | \$2,983,505 | \$3,016,234 | |
| EPA 319/WRAPS | \$997,744 | \$1,306,456 | |
| Other Federal/State Funds | \$342,706 | \$670,775 | |
| Total | \$5,443,433 | \$5,774,319 | |

Our Mission: To protect and improve the health and environment of all Kansans.





FINANCIALS 2016



Our vision is 'healthy Kansans living in safe and sustainable environments'. The state belongs to all of us - "Kansas Don't Spoil It"



LOAD REDUCTIONS

WRAPS ONLY

Nitrogen-
990 lbs.

Phosphorus –
525 lbs.

Sediment –
497 tons

COMBINED EFFORTS

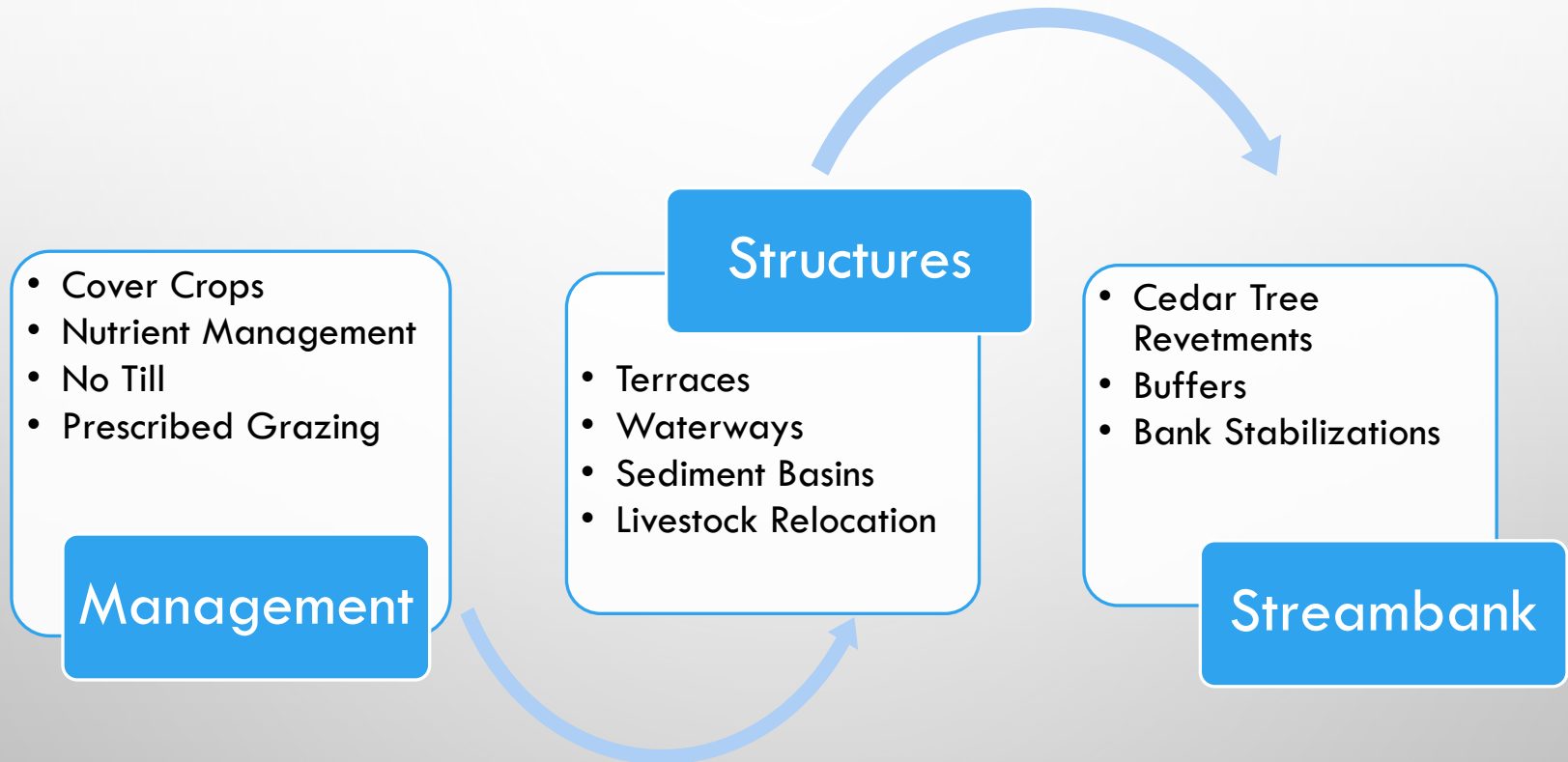
Nitrogen-
3,860 lbs.

Phosphorus –
2025 lbs.

Sediment –
1,900 tons

Our Mission: To protect and improve the health and environment of all Kansans.

CONSERVATION SYSTEMS



Our vision is 'healthy Kansans living in safe and sustainable environments'. The state belongs to all of us - "Kansas Don't Spoil It"



FINDING OUR STRIDE WITH MANAGEMENT PRACTICES

- Water quality is the primary goal for the WRAPS Program.
- Cropland and Livestock Management BMPs are the most efficient way to address loading in the watershed.
- KS WRAPS is redefining its niche in water conservation.
 - Promoting Soil Health initiatives
 - Precision Nutrient Management

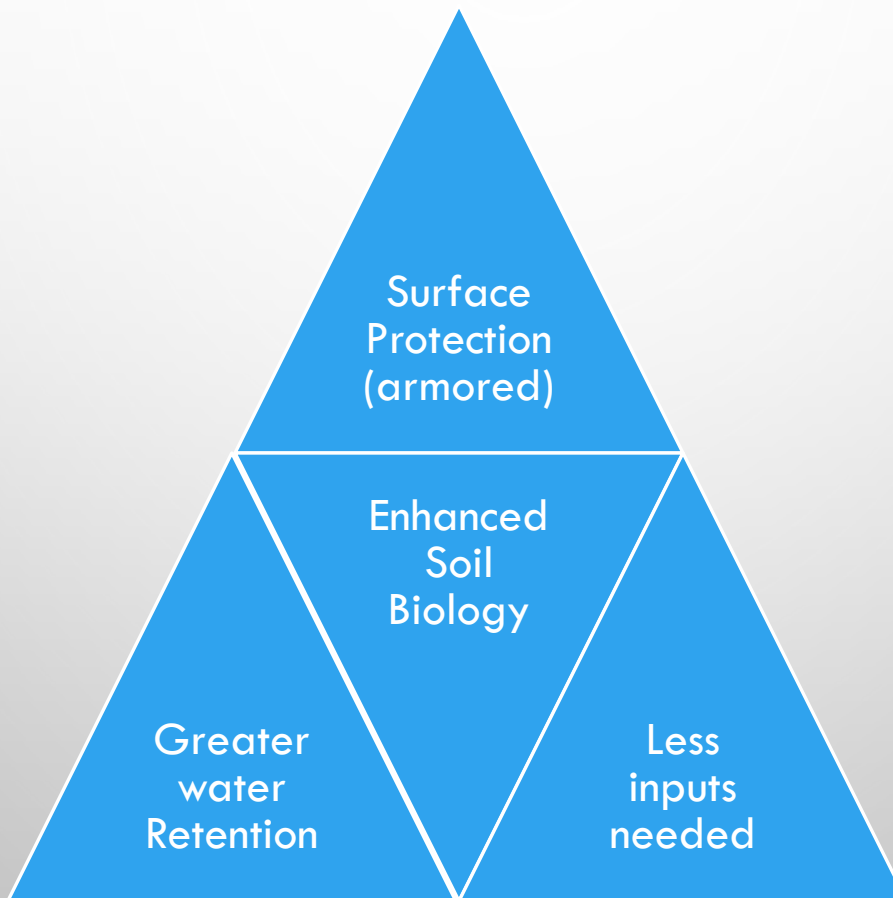


Load Reductions By the Numbers

- Total Phosphorus is roughly
 - 10% dissolved Phase, and
 - 90% soil bound.
- Research presented last meeting showed
 - 65% increase in dissolved P loading (~7% net increase)
 - 70% reduction in soil erosion (63% net reduction)



WHY COVER?





...and producers want them, too.



DONIPHAN COUNTY'S PROMOTION LAST YEAR.

THE CONSERVATION DISTRICT ROLLED OUT THIS ATTENTION GRABBING AD OFFERING COVER CROP COST SHARE. THE KICKER WAS CHALLENGING PRODUCERS TO BURY COTTON UNDERWEAR ALONG WITH COVER CROPS TO DEMONSTRATE SOIL BIOLOGY IN ACTION.



KANSAS Wraps

Watershed Restoration and Protection Strategy



Our Mission: To protect and improve the health and environment of all Kansans.

