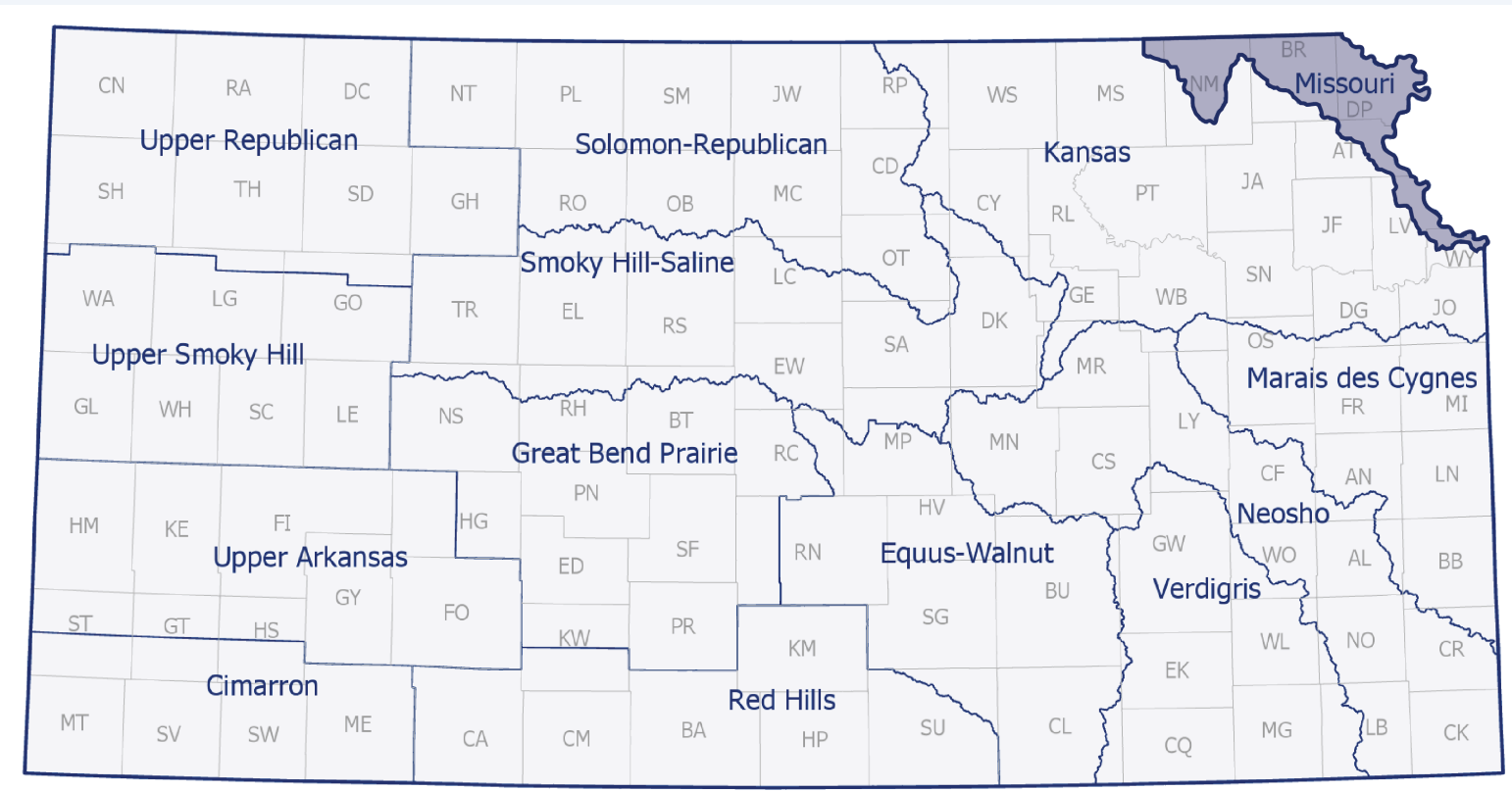


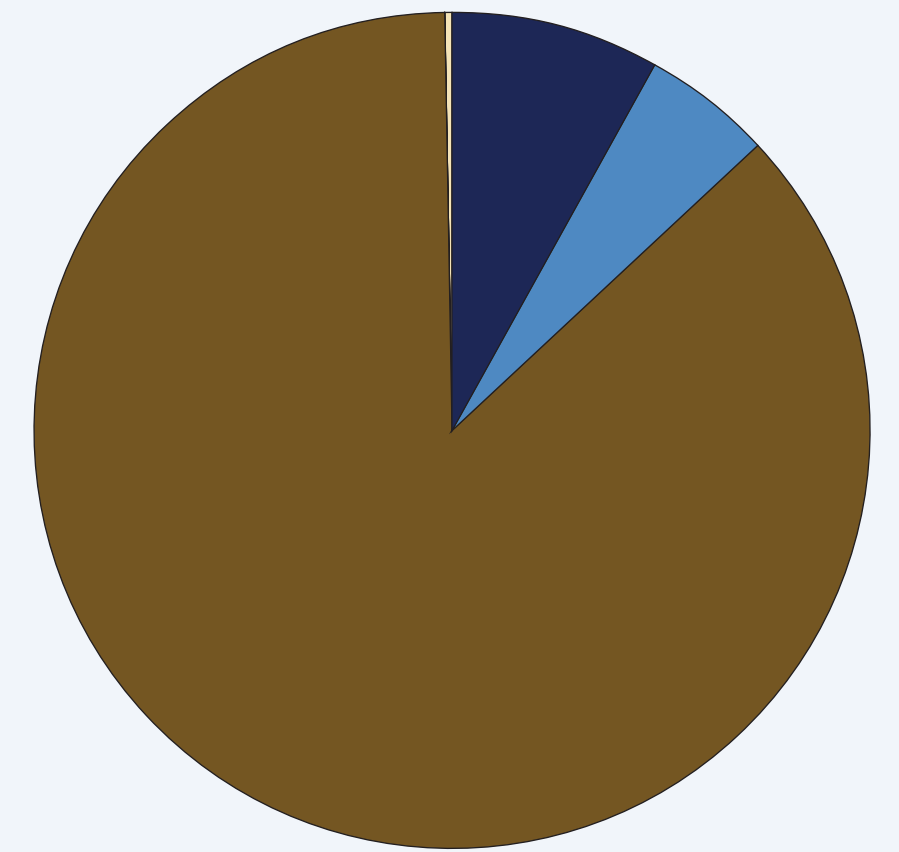
MISSOURI

Regional Planning Area



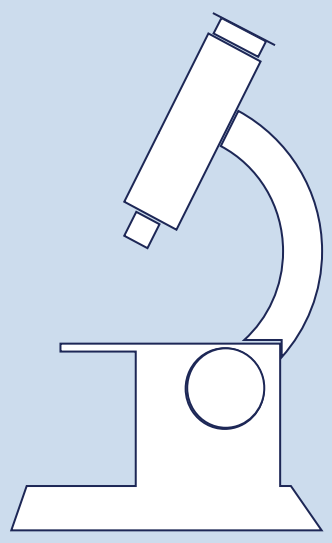
Water Use:

- Municipal (86%)
- Industry (8%)
- Irrigation (5%)
- Recreation (<1%)
- Stockwater (<1%)



Average water use, 2015-2019

KGS Water Quality Study



documented that 38% of the wells tested were above national nitrate standards of 10 mg/L.

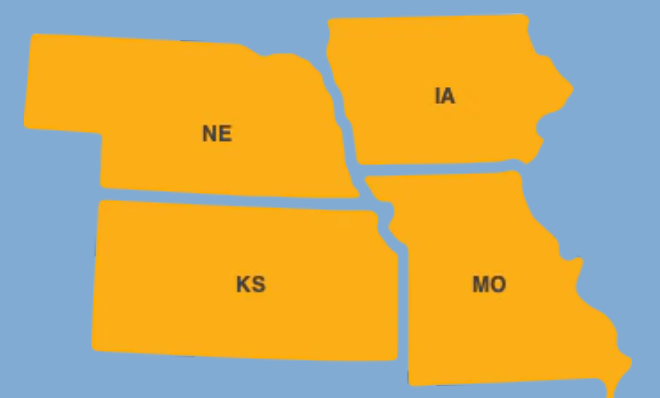
Drought conditions in the upper basin have led to low winter releases, impacting public water supply and utilities.



USACE Degradation Study estimated that the Missouri River bed will degrade another 8 feet.

8 feet

Since 2019, USACE has partnered with 4 states (IA, NE, MO, KS) for flood resiliency planning.

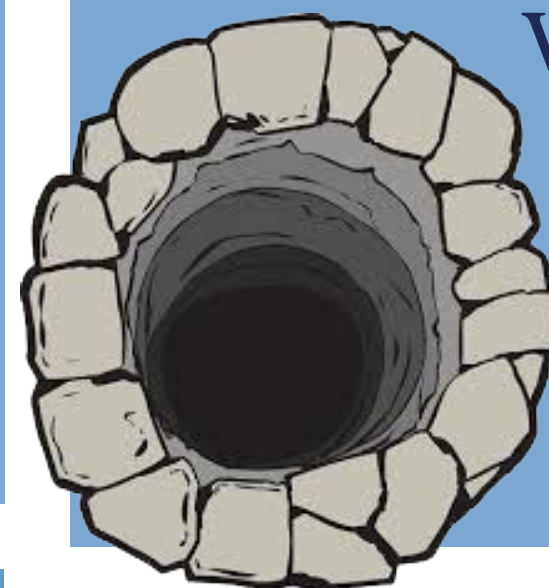


Loess Hill PACE Farm

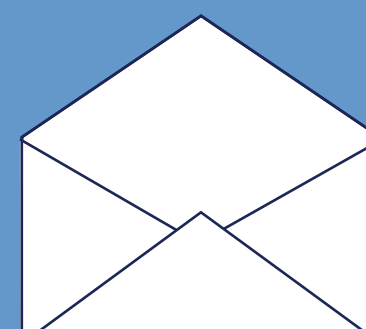
- Cover crops
- Crop rotation
- Animal impact

- Increasing soil organics and water infiltration

KGS uses several wells equipped with real time monitoring to evaluate the **Glacial Drift Aquifer**.



Participated in multiple **education events** to increase knowledge on water issues.



KWO Planner - Kirk Tjelmeland
kirk.tjelmeland@kwo.ks.gov