

Kansas Streambank Protection Program

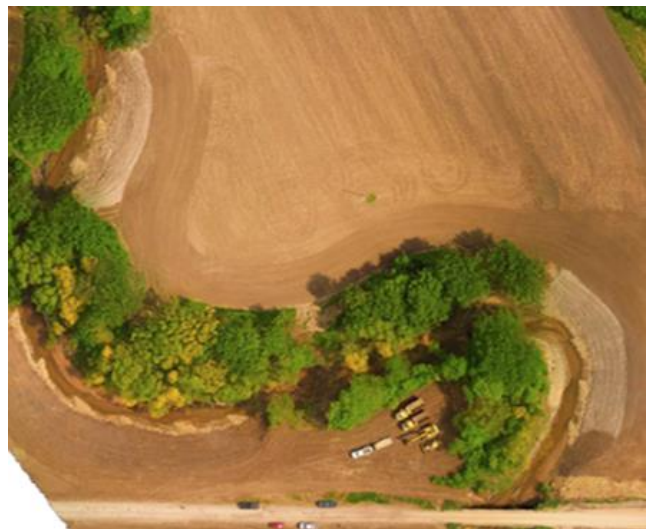
Focusing their efforts above federal reservoirs that provide public water supply and are threatened by sedimentation, Kansas Water Office (KWO), Kansas Department of Health and Environment (KDHE) and the Kansas Department of Agriculture (KDA) work together to decrease sedimentation through Streambank Protection Projects. Known as the “Streambank Team” this group combines their individual strengths to procure funding, prioritize project sites, and facilitate construction of the sites. The Streambank Team believes that vegetation is the long-term solution to decreasing erosion and partners with the Kansas Forest Service (KFS) as a technical service provider to revegetate the sites following the installation of the instream structures.

Process:

- 1) Sites are identified using NAIP imagery (2002-Current). The team utilizes UAS at times to get more current imagery.
- 2) Sites are prioritized by the amount of sediment lost. Watershed Restoration and Protection Strategy (WRAPS) and Division of Conservation (DOC) work together to contact landowners for interest and sites are ground-truthed.
- 3) After contracts are received from the landowners, the project is surveyed and designed.
- 4) After designs are reviewed, landowners submit and pay for permits.
- 5) Projects are put out for bid to local contractors through the state procurement process. The state pays for 100% of design, construction and buffer costs.
- 6) Following site construction, KFS contracts with local forestry contractors to complete the vegetative portion of the project.
- 7) Vegetation is managed by KFS for 3-5 years. Monitoring continues for the life of the contract (20 years)



Preconstruction UAS image of a Muddy Creek site.



Same site following construction.



Preconstruction photograph of a Big Blue River Site.



Same site following construction (taken looking back at where the first picture was taken).

Responsibilities of the Streambank Team:

KWO

- Oversees site identification, maintains streambank database
- Contributes to the pooled funding of the group and seeks other sources of funding
- Assists in design review

KDHE

- Coordinates with local WRAPS, as the primary outreach agency, to reach out to landowners
- Contributes to the pooled funding of the group and seeks other sources of funding
- Assists with monitoring

KDA, DOC

- Handles the bid process and contracting with contractors and designers
- Contributes to the pooled funding
- Assists with design review
- Contracts with KFS to complete vegetation
- Assists with site monitoring

KFS

- Provides technical assistance and planning for revegetation
- Provides maintenance on the streambank buffer for 3-5 years to insure successful establishment
- Assists with design review
- Assists with site monitoring



Buffers are planted with a diverse mix of species.



A buffer that is approximately five years old.



Buffer and streambank on a twenty-year-old site.