



# MILFORD LAKE WATERSHED

REGIONAL CONSERVATION PARTNERSHIP PROGRAM

Jewell County Annual Conservation District Meeting

February 19, 2020

Kirk Tjelmeland  
Water Resource Planner

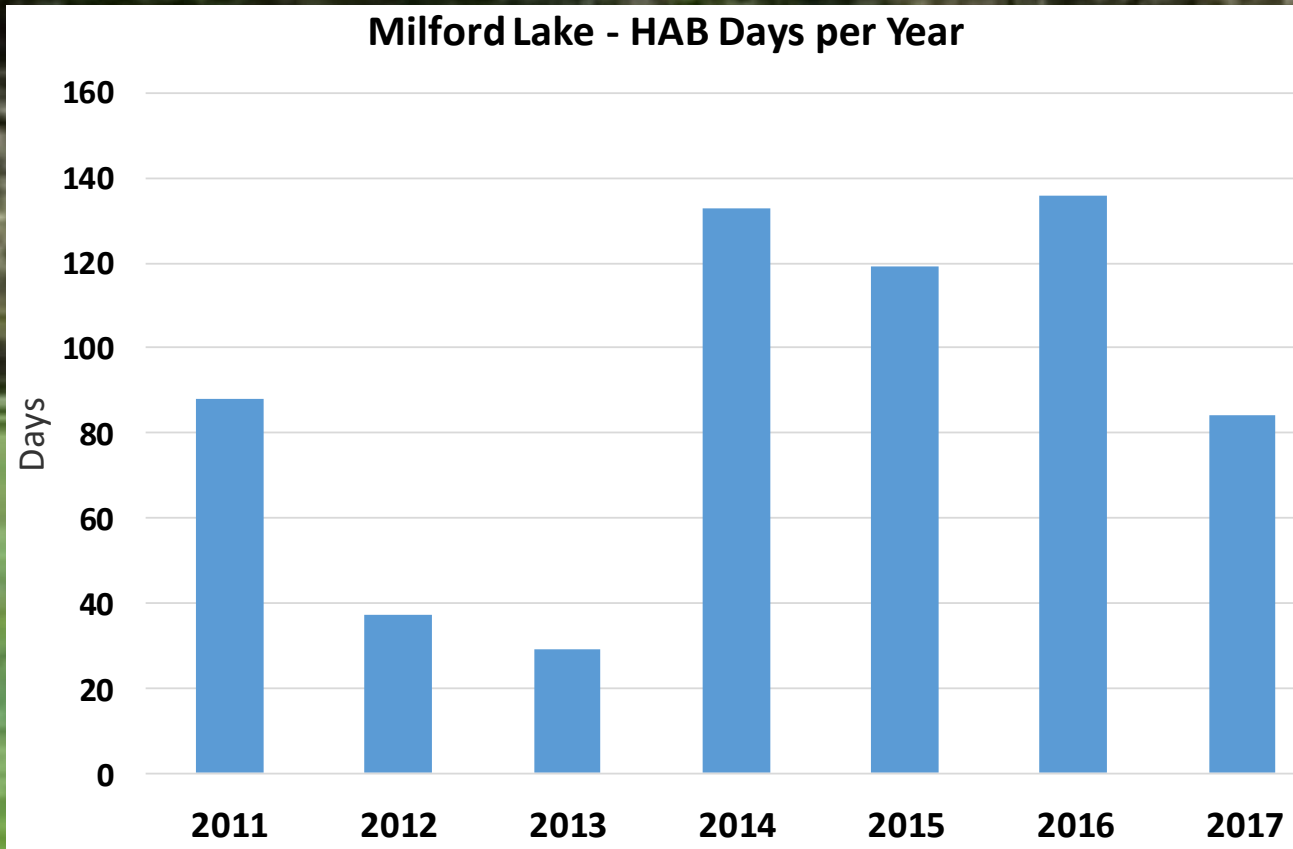


# Milford Lake



# The Issue at Milford Lake

## Harmful Algal Blooms (HABs)



- On KDHE Public Health Advisory List every year since 2011 (program started in 2010)
- HAB Days ranged from 29 (2013) to 136 (2016)
- Releases during HAB events can impact downstream public water supplies

# Building Partnerships to Address the Issue: Milford Lake Watershed RCPP Project

## Coming Together for Conservation: New Approach, More Partners

USDA Natural Resources Conservation Service

1



### Regional Conservation Partnership Program

is a new program that mobilizes partnerships to multiply investments and reach common conservation goals.

2

**More Partners** bring innovation, new ideas, resources and local expertise to solve problems.



Priority Conservation Projects



3

### RCPP Funding Options

40% National  
(multi-state projects)



25% State  
(state projects)



35% Critical Conservation Areas  
(areas designated by Secretary)



4

USDA plans to invest up to **\$1.2 billion**

USDA Goal:  
**Partners**  
match  
investment  
to equal —

**\$2.4  
billion**  
for conservation  
through 2018

more: [nrcs.usda.gov/FarmBill](http://nrcs.usda.gov/FarmBill)



## Regional Conservation Partnership Program

- Project Goal: Reduce watershed phosphorus loading by 31,000 lbs./yr. contributing to the formation of HABs in Milford Lake.
  - Target based on reductions noted for Milford WRAPS Watershed Plan
- EQIP Funding for Eligible Practices
  - Cropland and Livestock focus

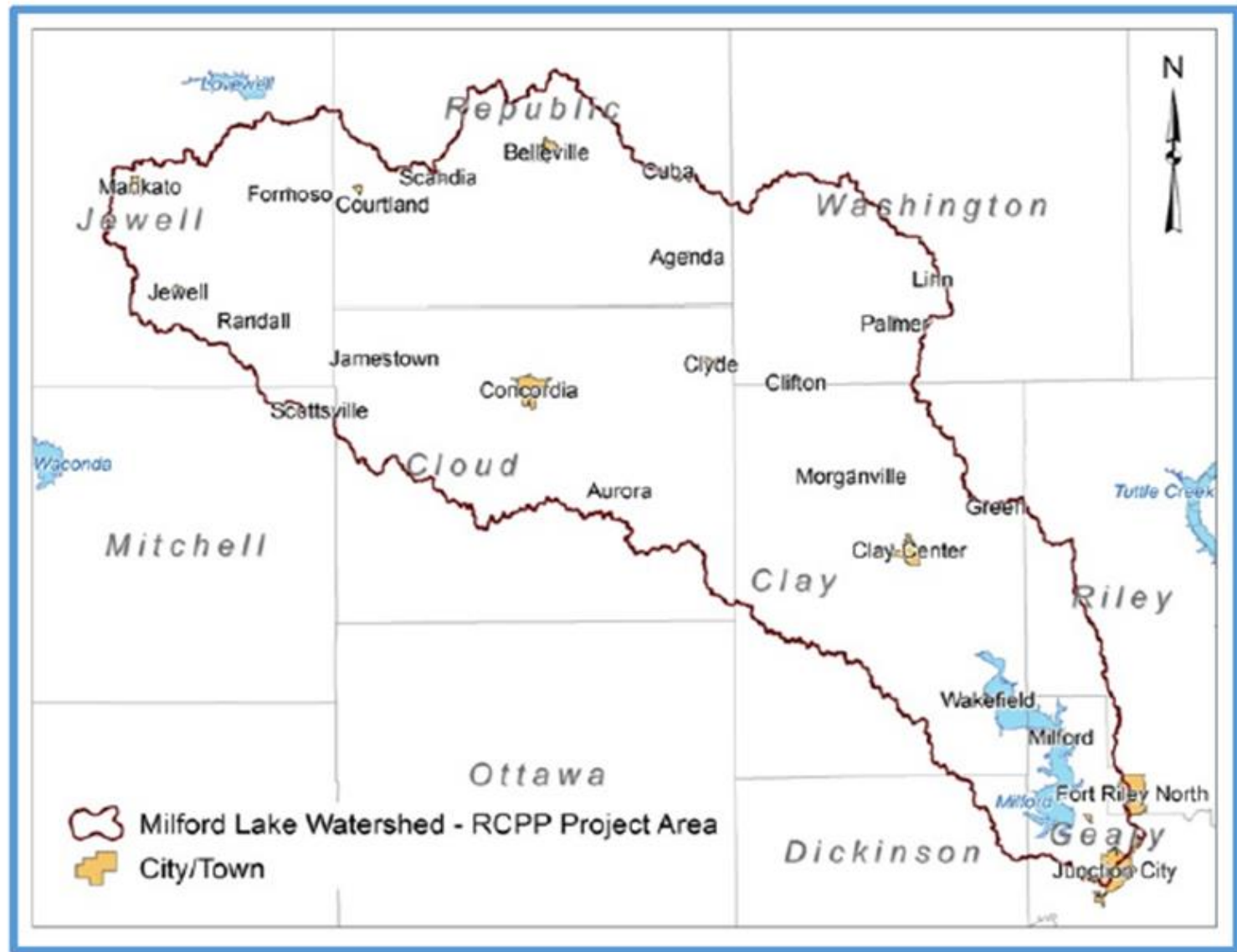


# Partnership Team:

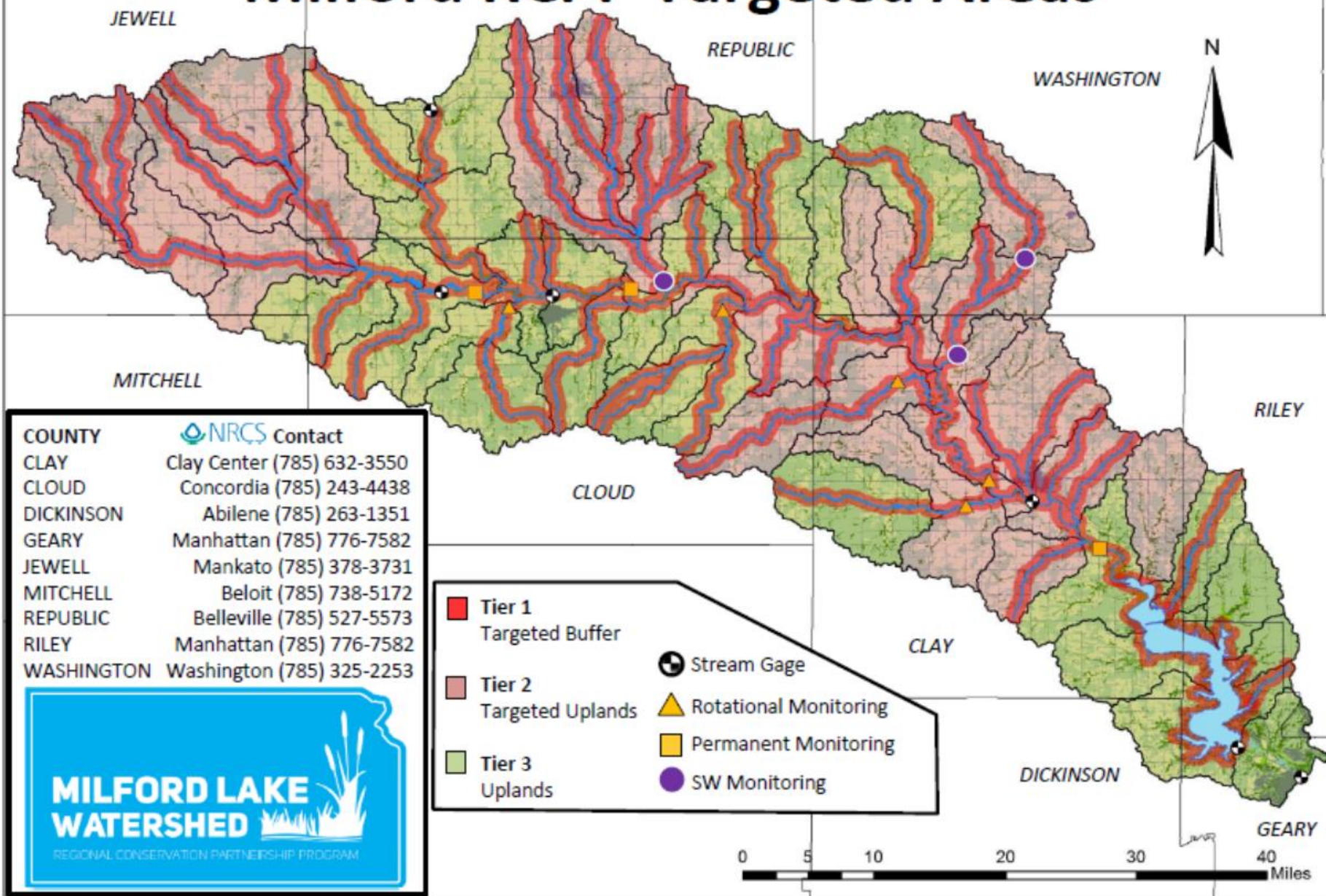
- Acorns Resort
- City of Lawrence
- City of Olathe
- City of Topeka
- City of Wakefield
- Clay County Conservation District
- Clay County Economic Development Group
- Cloud County Conservation District
- Dickinson County Conservation District
- EcoPractices (Sustainability Partners)
- Flagstop Resort & RV Park
- Friends of the Kaw
- Geary County Conservation District
- Jewell County Conservation District
- Kansas Alliance for Wetlands and Streams
- Kansas Biological Survey
- Kansas Corn Growers Association
- Kansas Department of Agriculture - Division of Conservation
- Kansas Department of Health and Environment
- Kansas Department of Wildlife, Parks and Tourism
- Kansas Farm Bureau
- Kansas Forest Service
- Kansas Soybean Commission
- Kansas Water Office
- National Sorghum Producers
- Natural Resources Conservation Service
- Republic County Conservation District
- Riley County Conservation District
- Sustainable Environmental Consultants
- The Nature Conservancy
- Thunderbird Marina & RV Resort
- Washington County Conservation District
- WaterOne of Johnson County
- Westar Energy



# Milford RCPP Project Area



# Milford RCPP Targeted Areas



# Core Practices

- Comprehensive Nutrient Management Plan (102)
- Nutrient Management Plan (104)
- Nutrient Management (590)
- Watering Facility (614)
- Cover Crop (340)
- Access Control (472)
- Fencing (382)
- Heavy Use Area (561)
- Residue and Tillage Management (329 & 345)

# Eligible Practice List

114	Integrated Pest Management Plan
142	Fish and Wildlife Habitat Plan
146	Pollinator Habitat Plan
154	IPM Herbicide Resistance Weed Conservation Plan
313	Waste Storage Facility
315	Herbaceous Weed Control
316	Animal Mortality Facility
317	Composting Facility
327	Conservation Cover
328	Conservation Crop Rotation
330	Contour Farming
332	Contour Buffer Strips
342	Critical Area Planting
350	Sediment Basin
351	Water Well Decommissioning
355	Water Well Testing (Groundwater Testing)
356	Dike
359	Waste treatment
360	Waste Facility Closure
362	Diversion
367	Roofs and Covers
378	Pond *
380	Windbreak/Shelterbelt Establishment
386	Field Border
390	Riparian Herbaceous Cover
391	Riparian Forest Buffer
393	Filter Strip
410	Grade Stabilization Structure
412	Grassed Waterway
430	Irrigation Pipeline
441	Irrigation System, Microirrigation

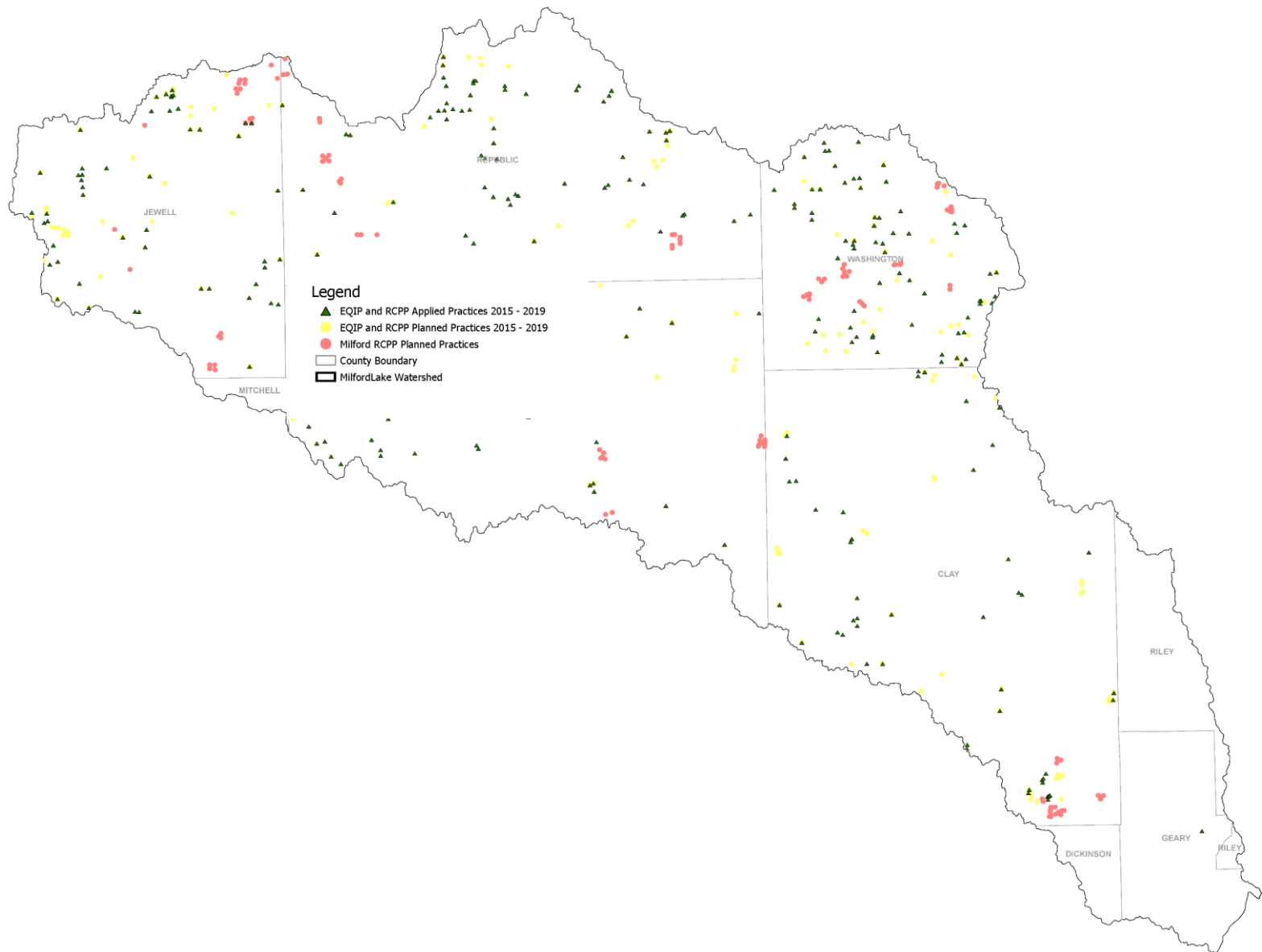
446	Land Smoothing
468	Lined Waterway or Outlet
484	Mulching
490	Tree/Shrub Site Preparation
512	Forage and Biomass Planting
516	Livestock Pipeline
520	Pond Sealing or Lining, Compacted Soil Treatment *
521A	Pond Sealing and Lining-Flexible Membrane *
528	Prescribed Grazing
533	Pumping Plant
550	Range Planting
554	Drainage Water Management
558	Roof Runoff Structure
560	Access Road
574	Spring Development
575	Trails and Walkways
576	Livestock Shelter Structure
595	Integrated Pest Management
600	Terraces
620	Underground Outlet *
629	Waste treatment
632	Waste Separation Facility
634	Waste Transfer
635	Vegetated Treatment Area
638	Water and Sediment Control Basin *
642	Water Well *
656	Constructed wetland
657	Wetland Restoration
658	Wetland Creation

# Year 1 Progress

- 590 – Nutrient Management 12,251 ac
- 340 - Cover Crop 7,336 ac
- 528 - Prescribed Grazing 2,850 ac
- 382 - Fence 21,429 ft
- 600 - Terrace 18,200 ft
- 362 - Diversion 12,581 ft



# Milford Lake Watershed EQIP and RCPP Practices Applied and Planned through 2020



**WWW.MILFORDWATERSHED.ORG**

MILFORD  
WATERSHED

https://www.milfordwatershed.org/

# HELP FIGHT TOXIC ALGAE IN KANSAS

LEARN MORE ABOUT THE MILFORD WATERSHED RCPP

# Questions or Comments

Kirk Tjelmeland

785-296-3185

[Kirk.tjelmeland@kwo.ks.gov](mailto:Kirk.tjelmeland@kwo.ks.gov)

