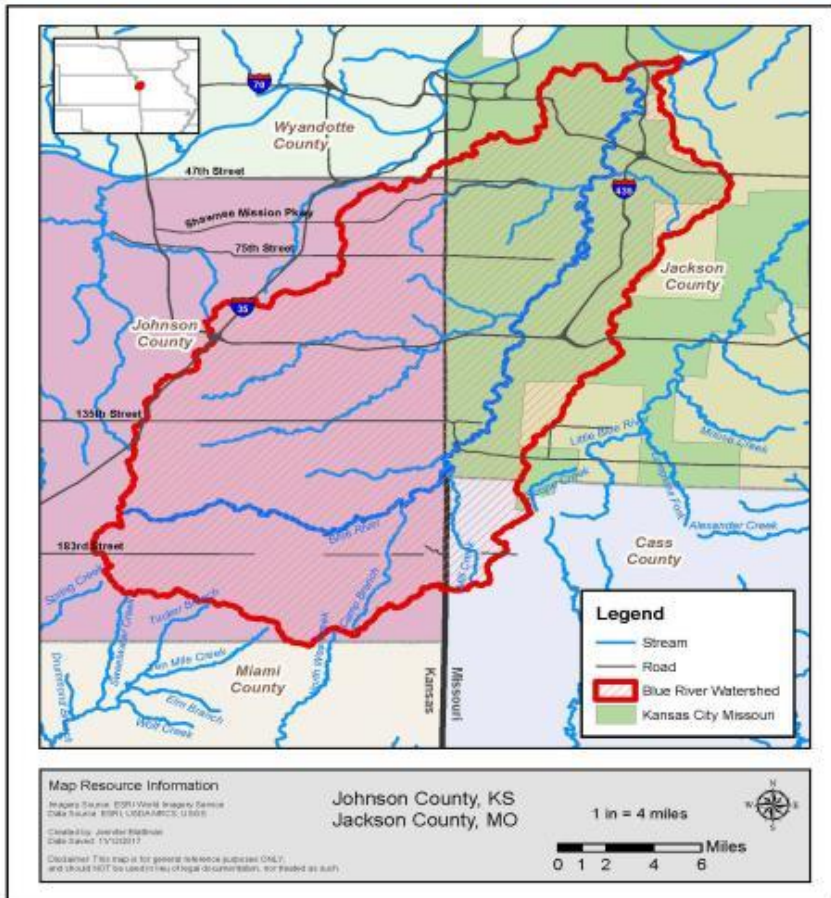


# **“Green Side Up” in Johnson County**



Blue River Watershed  
Kansas City Metropolitan area

THE  
CONSERVATION FUND

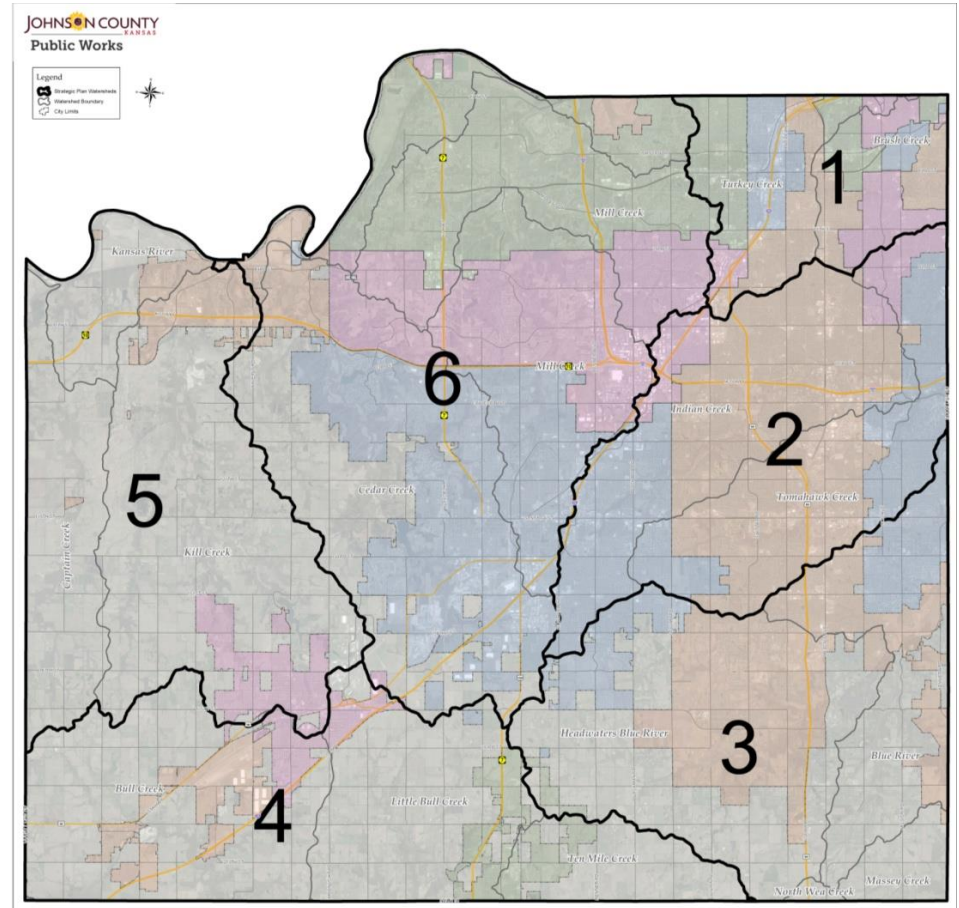


## Blue River Watershed

- 40 river miles
- 60% Kansas, 40% Missouri
- 185,000 acres
- 750,000 people
- WQ impairments: bacteria, nutrients, oxygen

## Watershed Organizations

- Community characteristics
- Percent build out
- Potential types of projects
- Common receiving waters
- Other factors















*Hydric Soils!!*

## **The Study**

Funded through grant from Pisces Foundation

Partners:

- Johnson County Stormwater Management Program
- Johnson County Parks and Recreation District

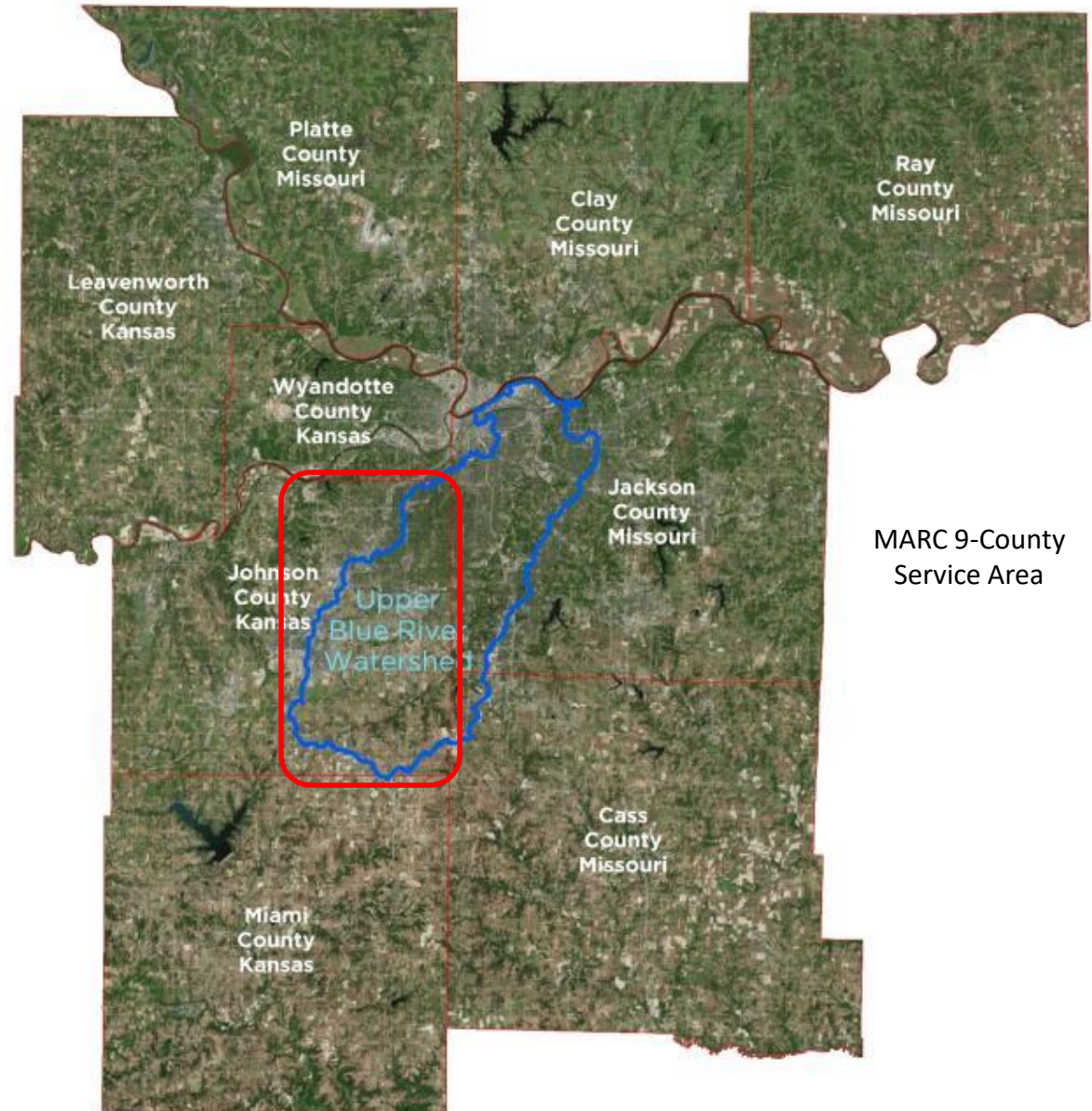
Loosely modeled on MMSD Greenseams® Program

Expanded to include priority recreational opportunities



# Study Focus Area

- Upper Blue River watershed within Johnson County, Kansas
- Land area:  
**100,843 acres**





# GIS Source Data for Rapid Assessment

## 1 Forest Prioritization LSP criteria list

2014 MARC project on forest  
prioritization – conservation  
and restoration ranking models

Logic Scoring of Preference (LSP)  
method to help  
organize/weight criteria

2.5-meter resolution raster data –  
aligns with MARC land use land  
cover data (2012)

CoreLogic parcel data for Johnson  
County KS (2017)

### 11 Clean Water Benefits

#### 111 Water Quality

1111 Water Purification Service

1112 Erosion Control Service

1113 Steepness of Slope

1114 Proximity to Drainage Network

1115 Floodplain Location

#### 112 Water Quantity

1121 Water Flow Regulation Service

1122 Water Retention / Hydric Soils

1123 Groundwater Recharge Service

1124 Groundwater Transmission Rate

### 12 Clean Air Benefits

121 Air Quality Enhancement

122 Climate Mitigation

1221 Carbon Storage Service

1222 Microclimate Regulation Service

1223 Proximity to Impervious Surface

### 13 Quality of Life Benefits

131 Proximity to Existing Bikeway/Trail Corridors

132 Proximity to Existing Protected Lands

### 14 Wildlife Benefits

141 Forest Patch Size

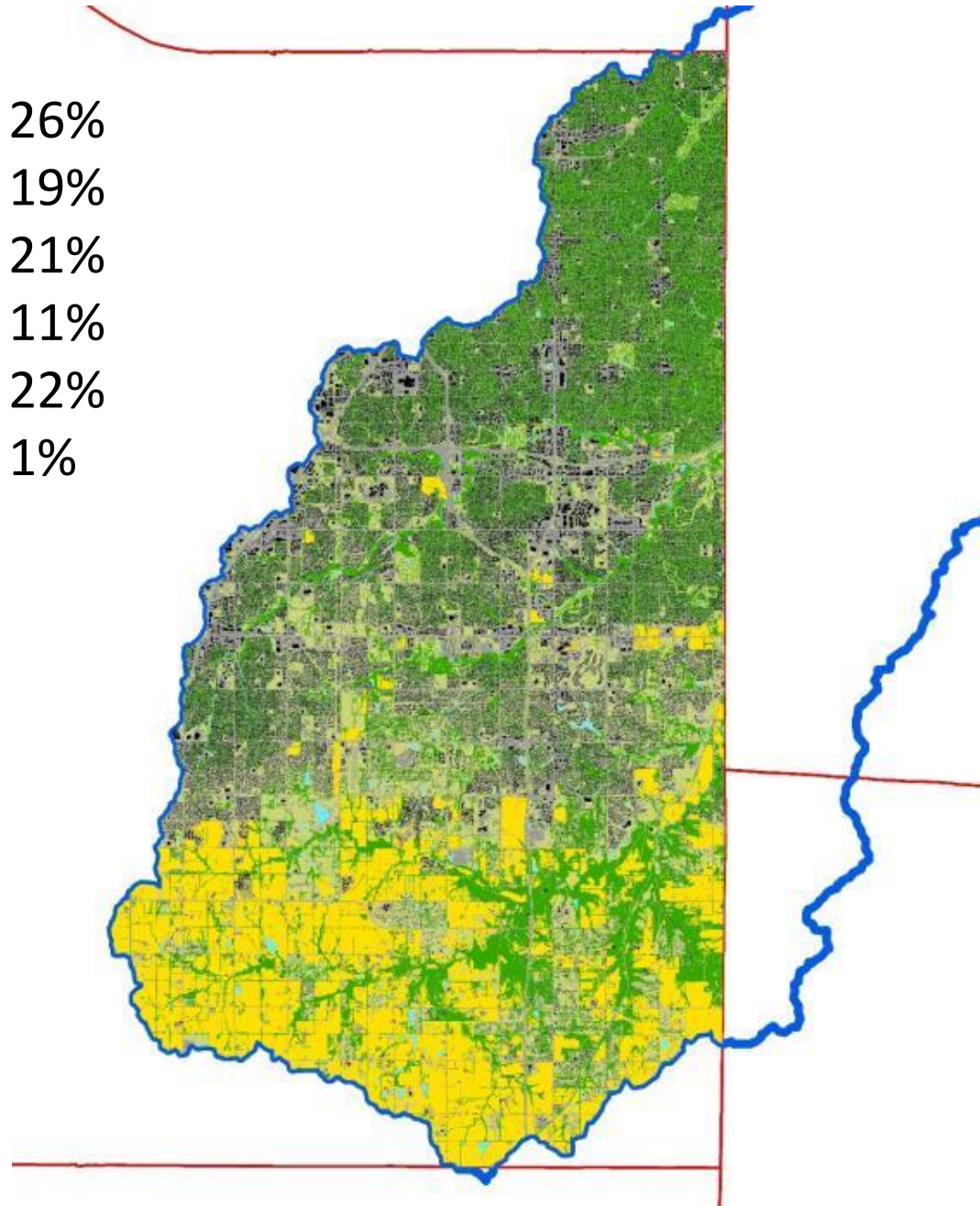
142 Forest Interior Habitat

143 Proximity to Forest Patches

144 Forest Patch % by Watershed

# MARC Land Use Land Cover

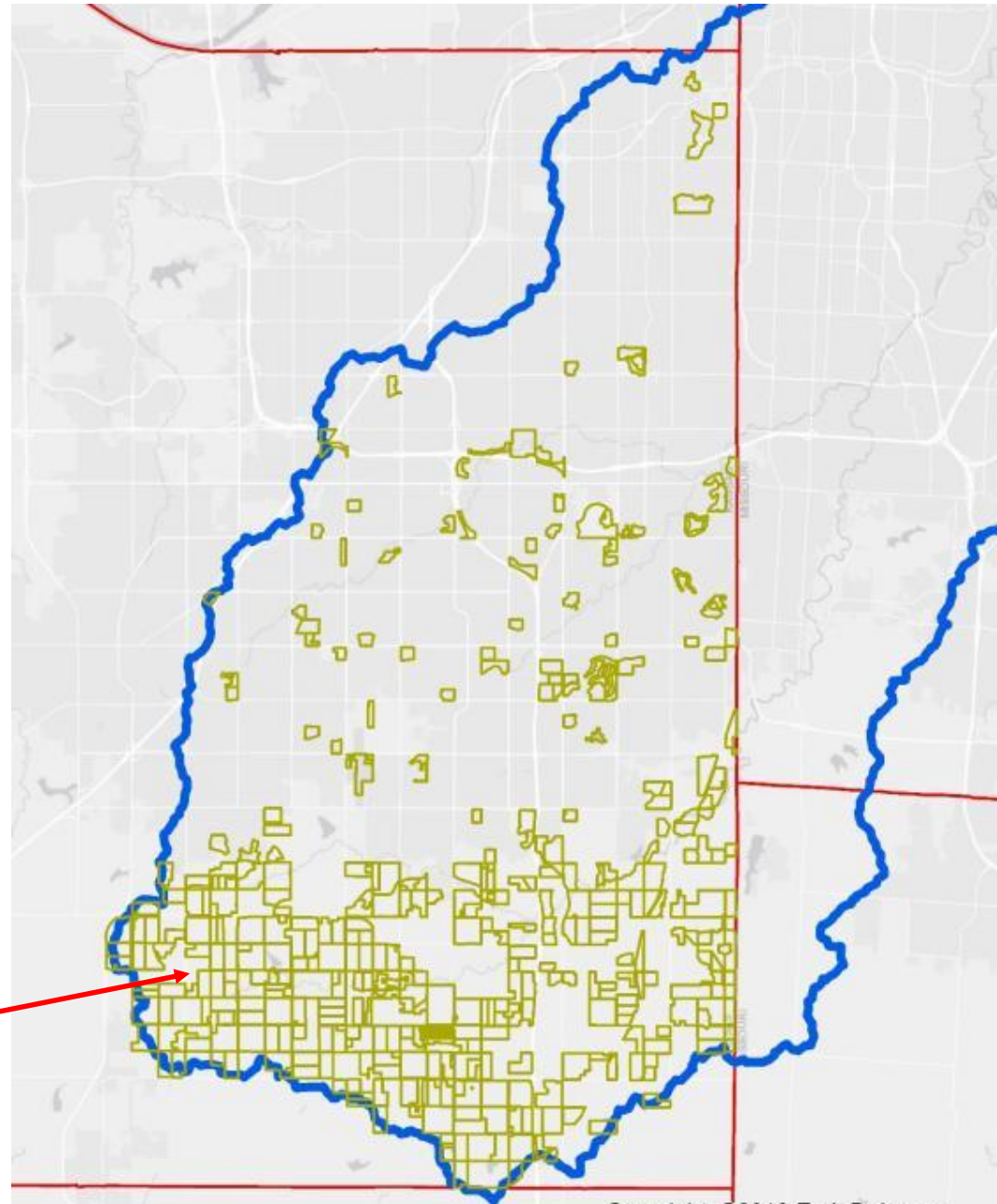
Forest	26%
Cultivated	19%
Herbaceous, Shurb-Scrub	21%
Impervious Buildings	11%
Barren, Other Impervious	22%
Water	1%





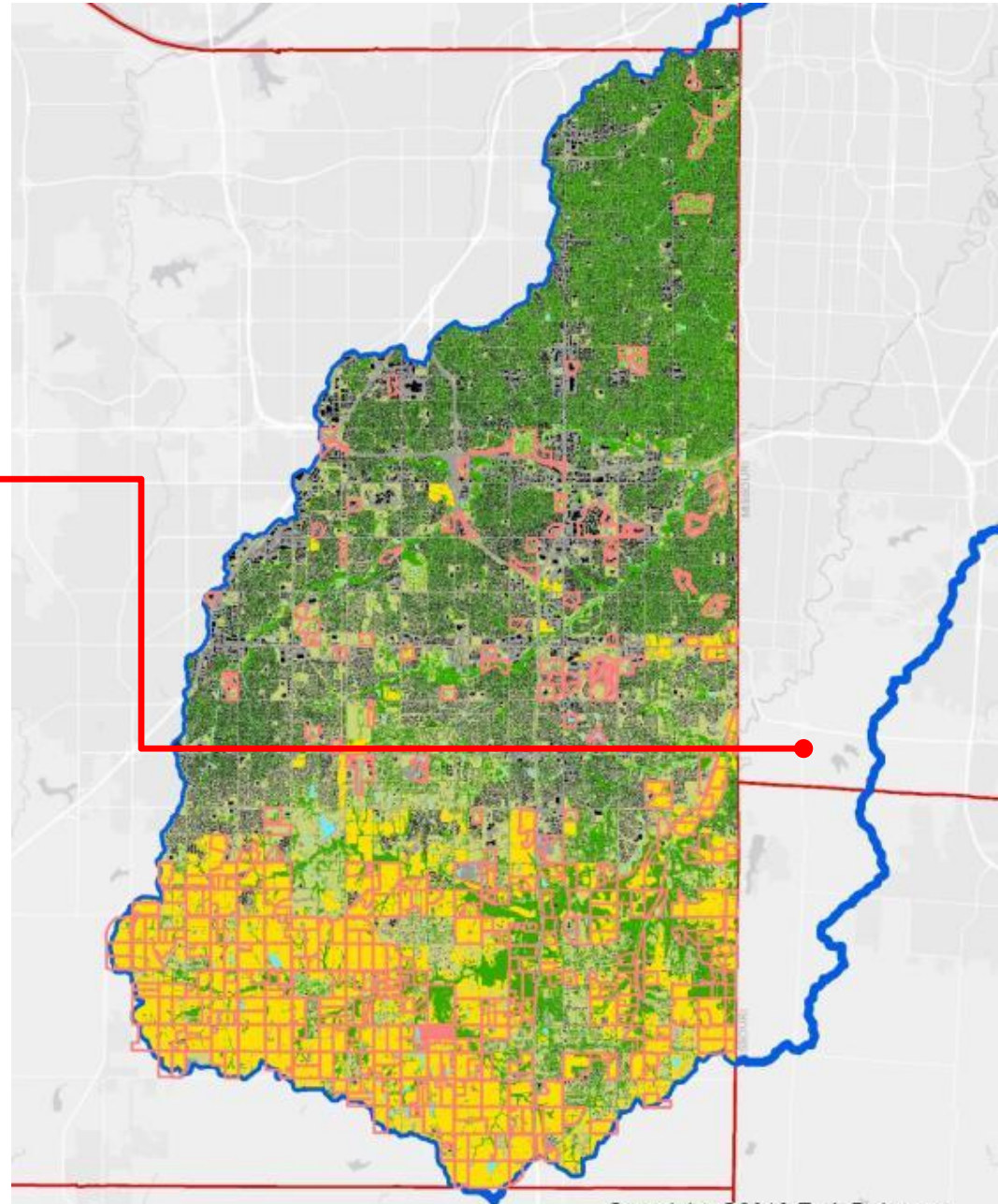
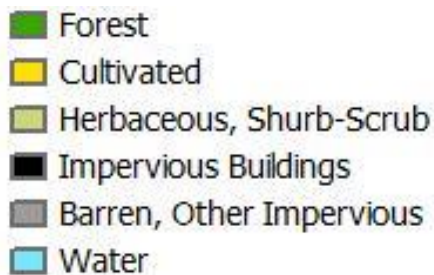
# Parcel Selection

- All Johnson County CoreLogic parcels (2017) (226,397)
- Subset within Upper Blue River watershed (125,824)
- Select only parcels greater than 25 acres (468)
- Only private land mostly within watershed (361)



# Analysis Refinement

- Remove unsuitable opportunities from 361 first cut priority parcels (22,773 acres)
- Remove most/all parcels north of primary agricultural zone
- Rank remaining parcels based on floodplain, hydric soils statistics & proximity to protected lands



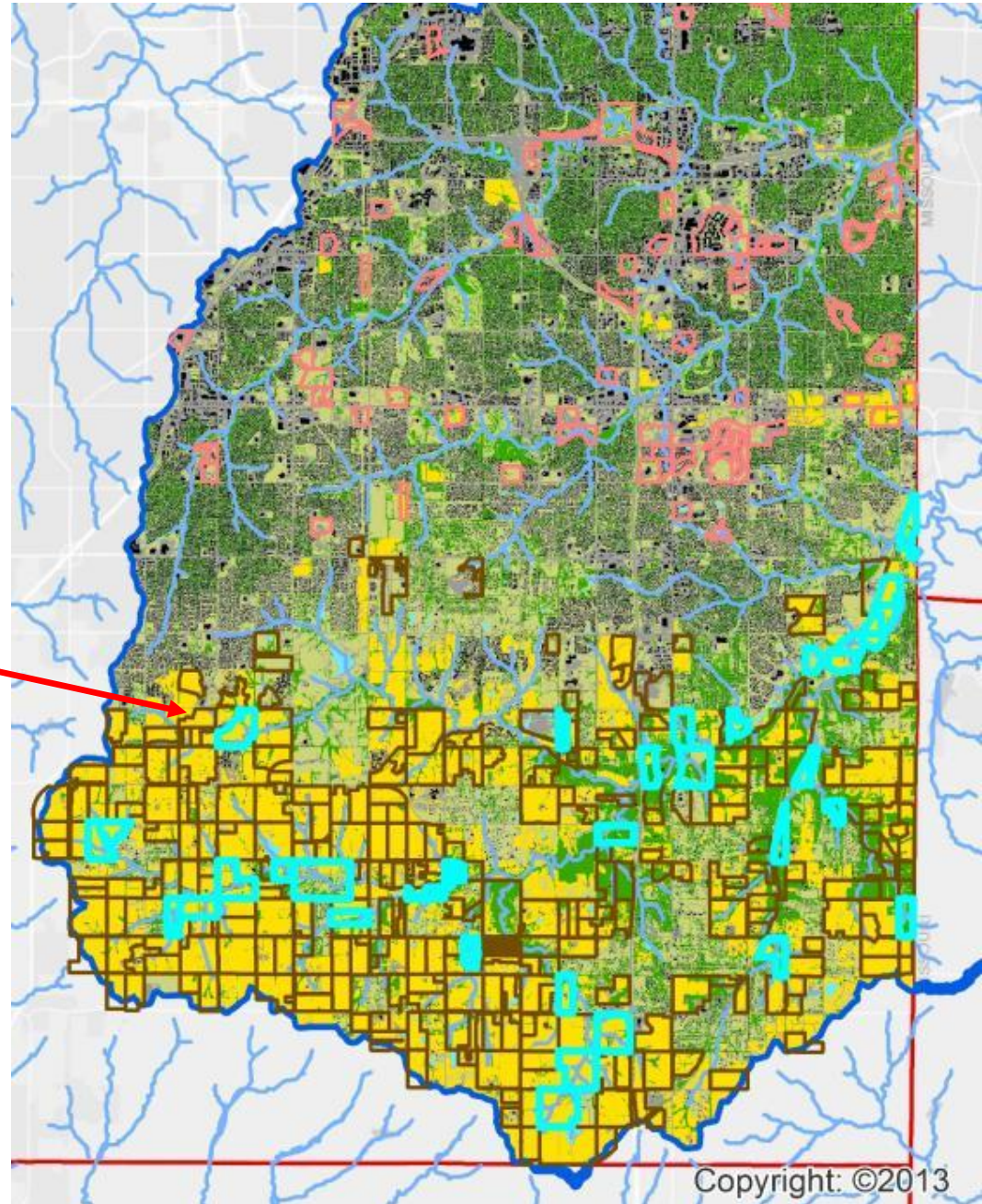
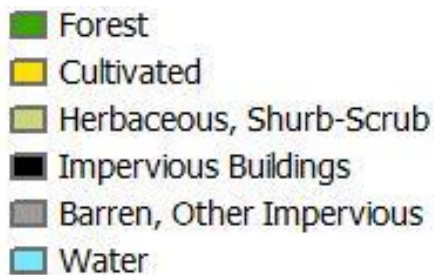


# Further Analysis Refinement

- Primary agricultural zone
  - 292 parcels
- Subset with priority resource land area > 25 acres & percent of parcel inside tier 1 area > 50%:

{AND} 35 parcels with 2,410 acres

{OR} = 83 parcels with 6,533 acres

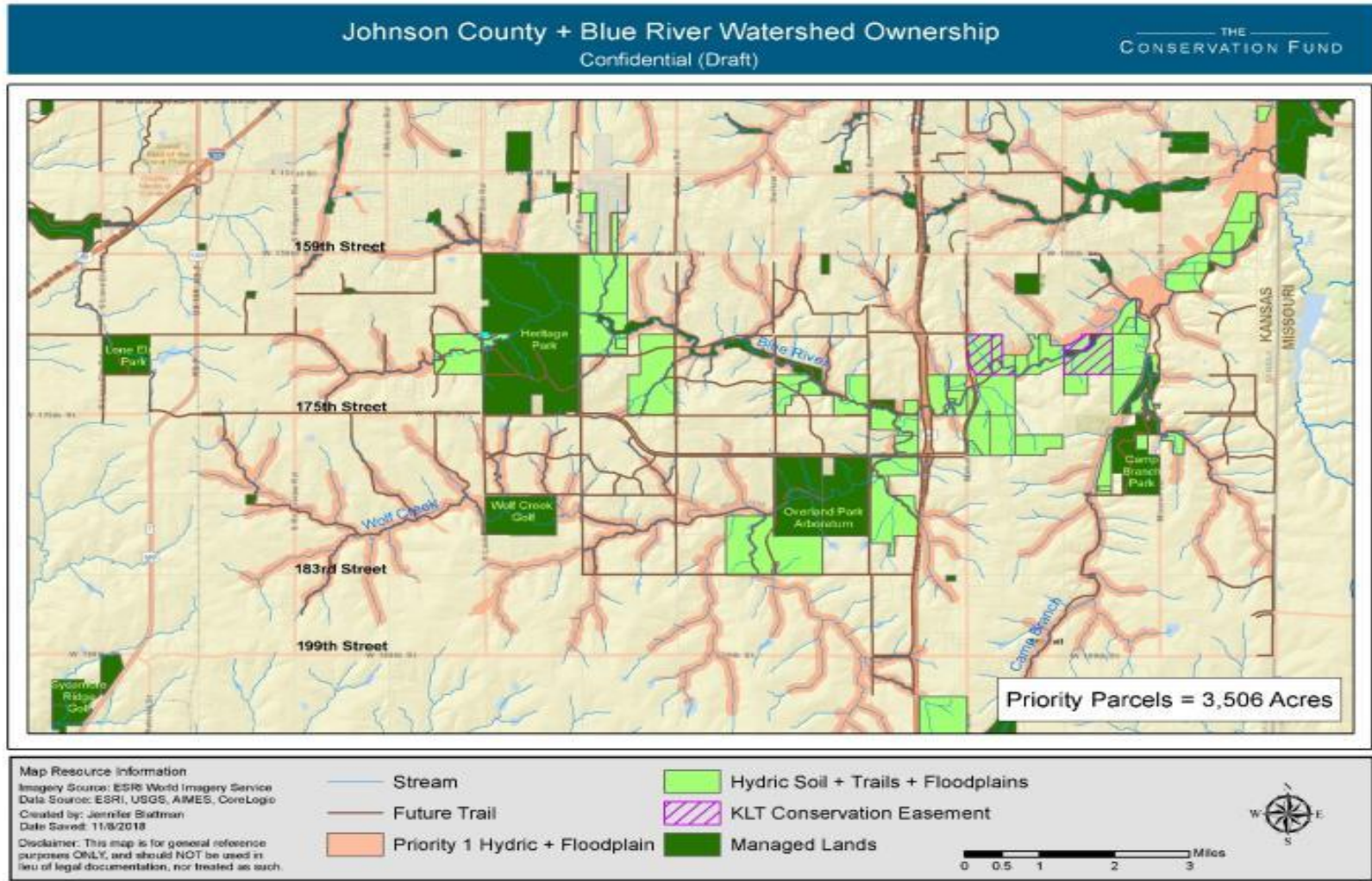


## Johnson County Parks and Recreation District

- Jo Co loves trails!
- Parks future trails plans
- Parcel data additions







## 2019 Planning and Implementation

- Identify priority corridor(s) and key project(s)
- Develop implementation strategy
- Formalize conservation partnerships
- Engage landowners
- Raise \$\$!

