

WATER INNOVATION SYSTEMS AND EDUCATION (W I S E) INITIATIVE

MARCH 5TH, 2024



W.I.S.E. Program

(Water Innovation Systems and Education)

- The program is an expansion of our legacy Water Technology Farms and PACE Farm programs, started in 2016.
- Public/private partnership program that focuses on fostering the implementation of field practices, equipment, technologies and management strategies.
- Industrial, agricultural, rural municipal water applications.
- Goal: Result in measurable and scalable ground water conservation, improving water quality, promoting overall ecological and public health, using economically viable solutions.



WISE



W.I.S.E. Program

(Water Innovation Systems and Education)

Challenges

- Groundwater depletion (agricultural, industrial and municipal impacts)
- Watershed water quality (agricultural, ecosystem and public impacts)
- Reservoir sedimentation (usable & emergency storage)
- Municipal water quality (public health and usage)
- Municipal water quantity (public use practices)

Projects

- Agricultural irrigation technology and field practices
- Dairy and feed-yard water reclamation
- Industrial and municipal water reclamation
- Agricultural water quality field practices
- Overall soil health and ecological conservation
- Producer and public education initiatives



W.I.S.E. Program

(Water Innovation Systems and Education)

Includes the implementation of:

- Producer-lead research and implementation
- Education and outreach
- Producer training events
- Inner-agency collaboration and cross-training
- Regional agriculture and public round-table meetings
- Innovation cost-share programs
- Foster producer leadership and mentoring



W I S E



W.I.S.E. Program

Overview

Water Innovation Systems and Education (W.I.S.E.) Farms (2022)

- Water Technology Farms (legacy 2016-2022)
- P.A.C.E. Farms (legacy 2018-2022)
- WISE Farms
- WISE Tours
- Field Days
- Producer Training
- Product/Service Demos
- Stakeholder Round-table Meetings
- Promote related Education Initiatives
- Promote Workforce Development
- Agency/Organization Coordination
- Agency/Organization Training
- Advise State Cost-share Programs

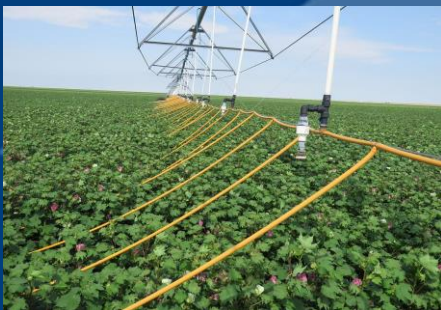
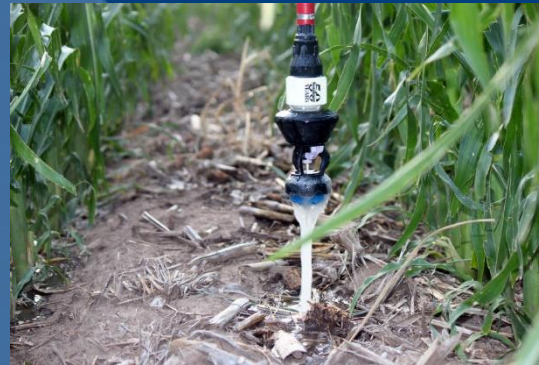


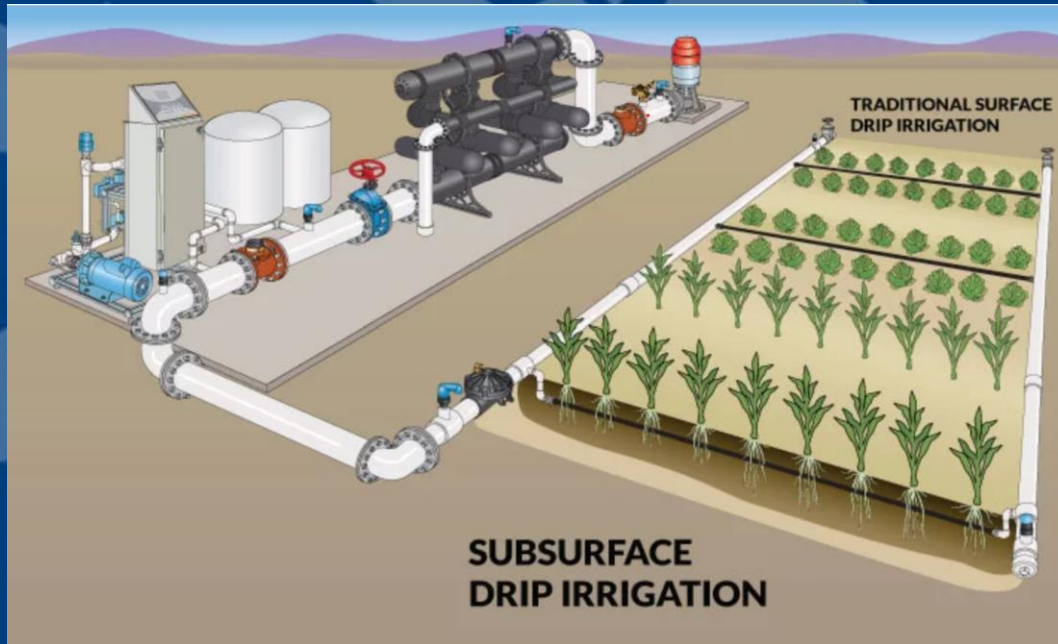
W.I.S.E. Program

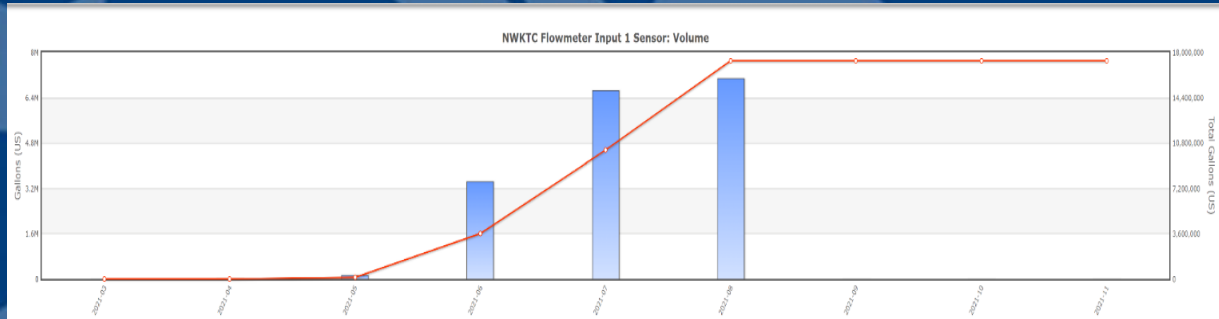
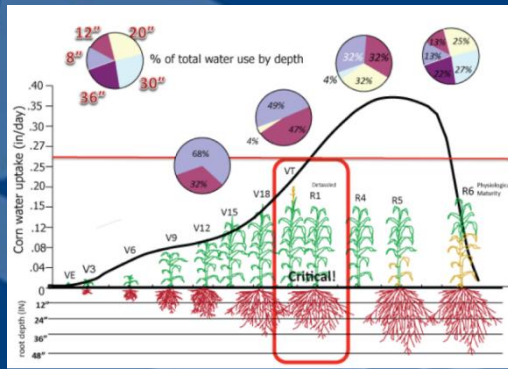
Philosophy

- Multiple (even uncommon) systems working together as one toward a common goal! *Perhaps its technology, soil health and field practices working together, or perhaps its community, policy and education, etc.*
- Three cycles of progress for everyone! *If we all start from where we are and make progress forward “three revolutions”, we will see measurable success from our common efforts – exponentially!*
- Right here – Right now! *While we still have our resources, options, and time – let’s get this done!*

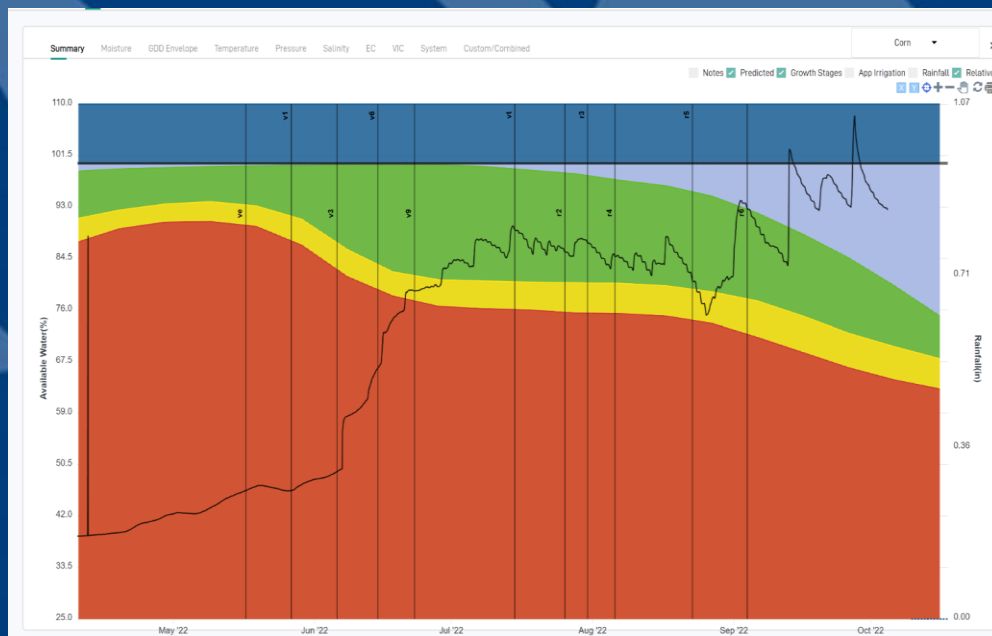
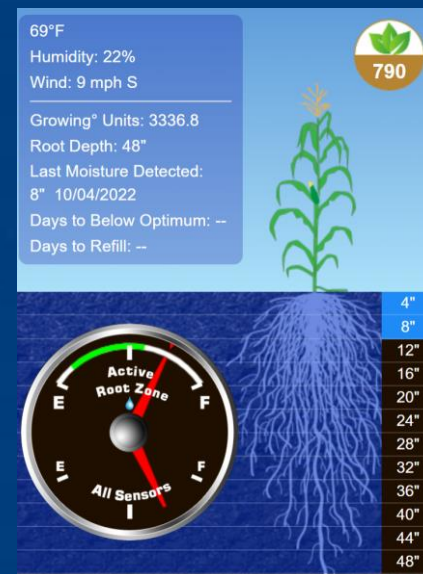
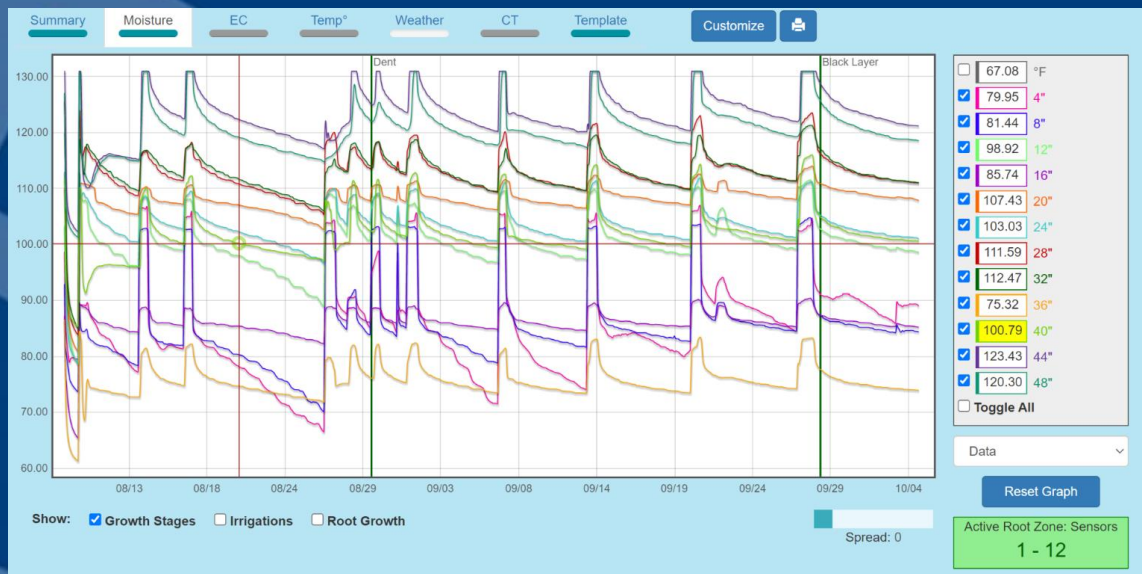


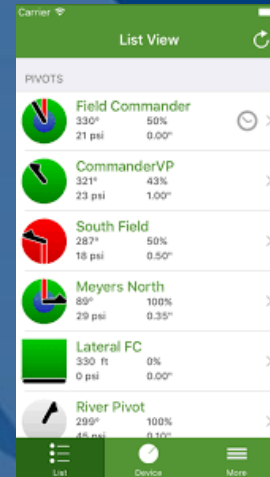
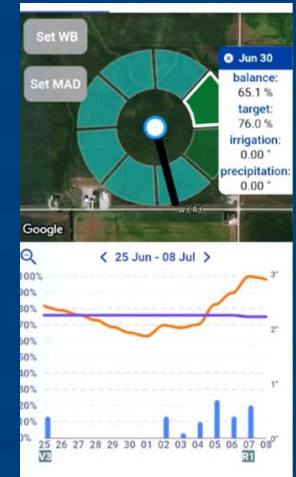




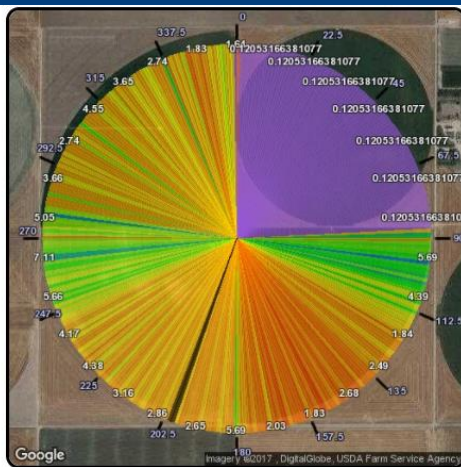
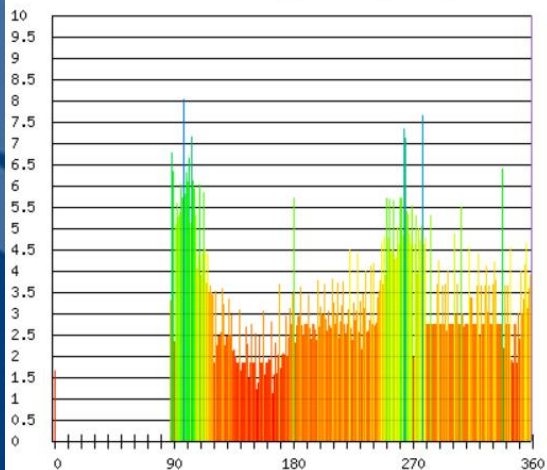




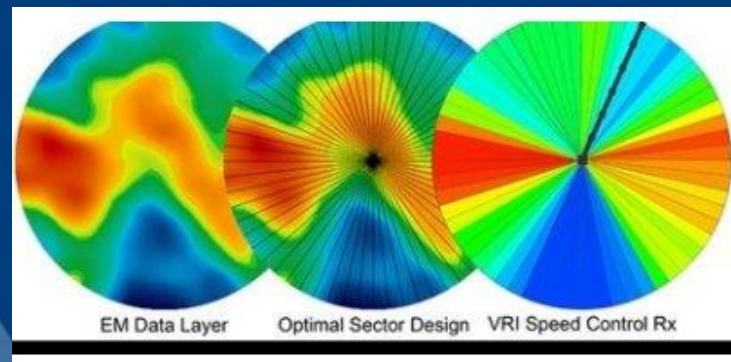
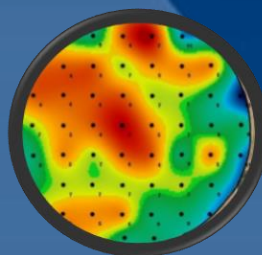
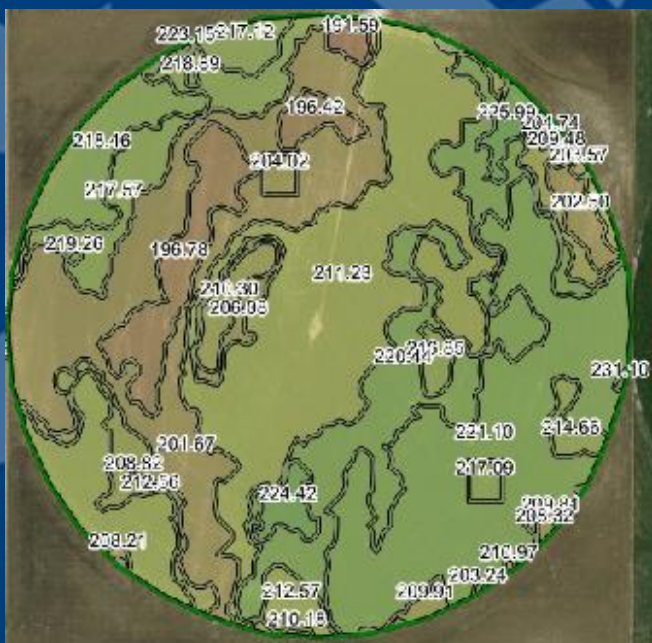


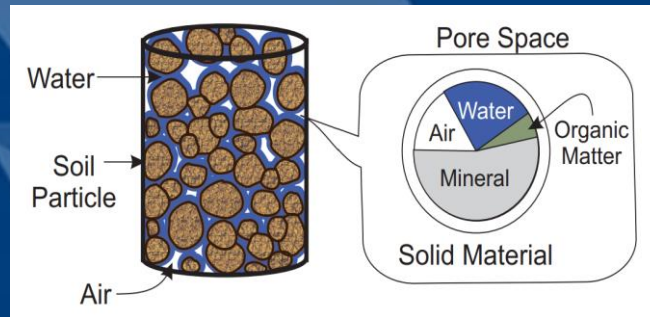
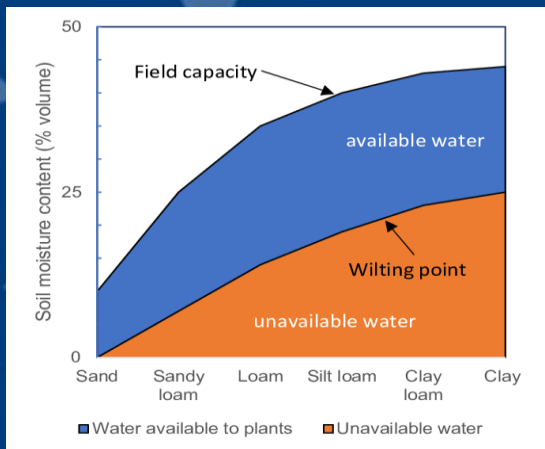
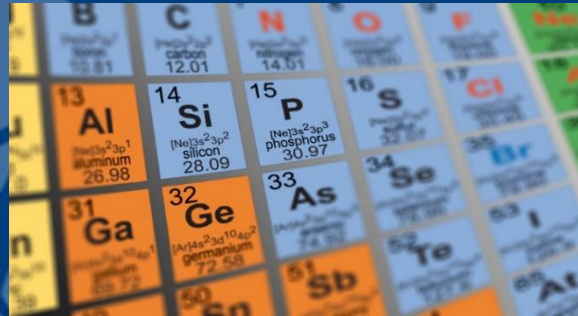
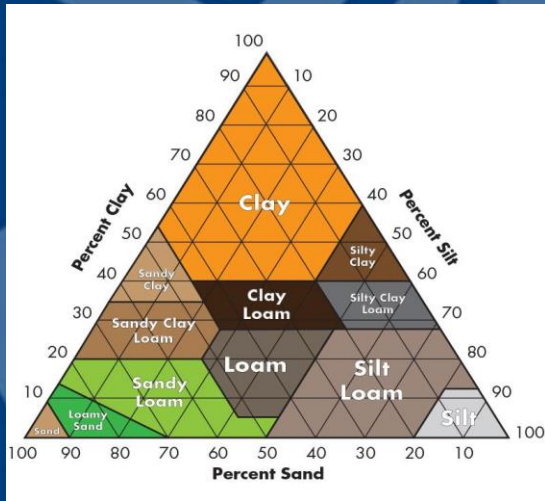


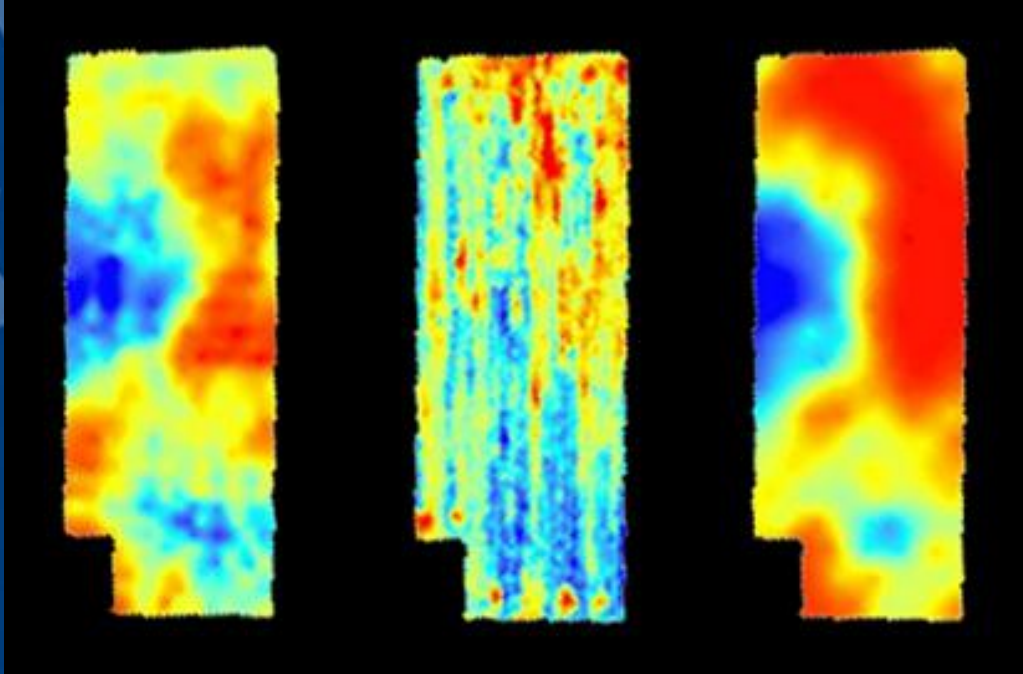
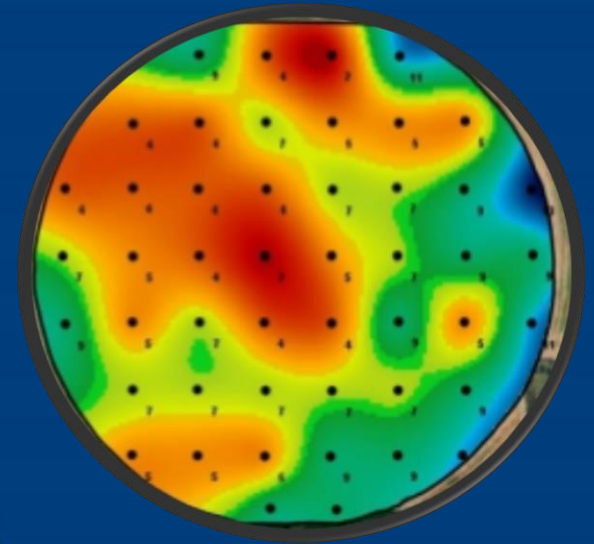
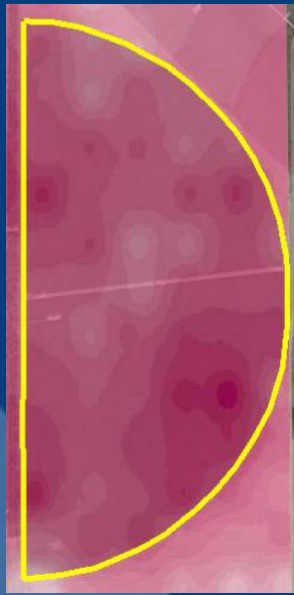
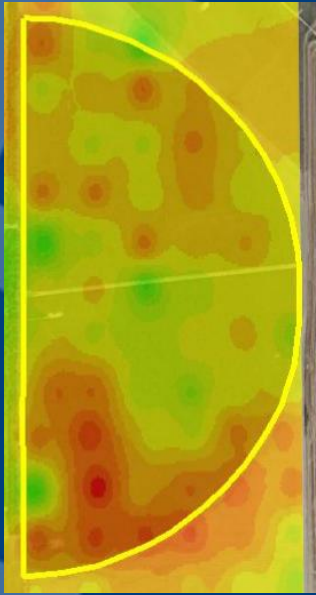
Acre Inches Applied by Angle

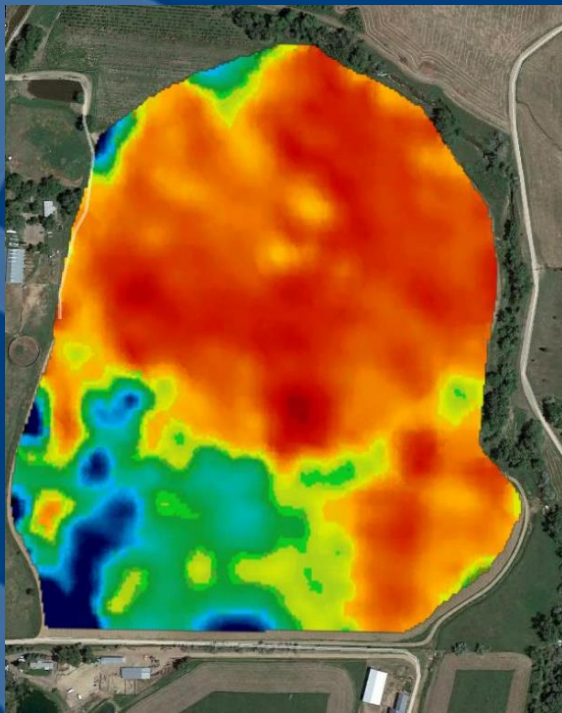


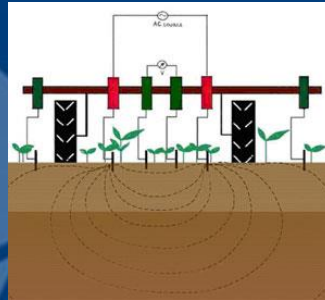
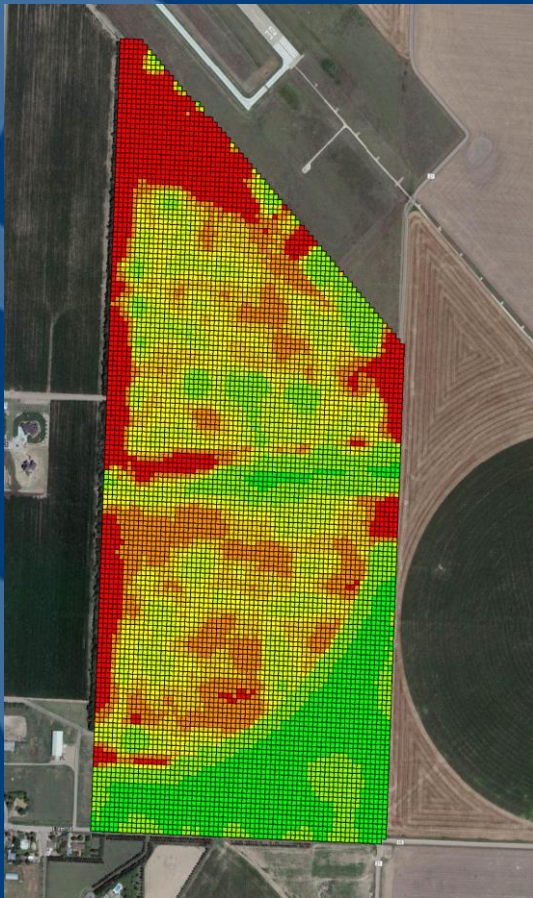
Acre Inches Applied

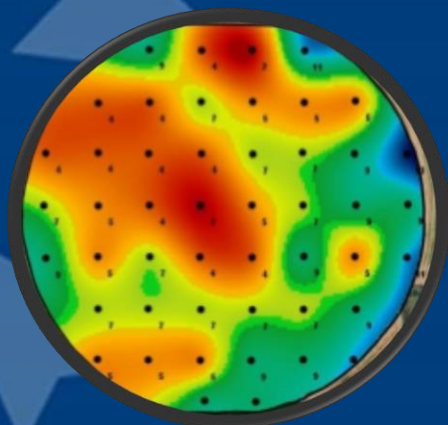
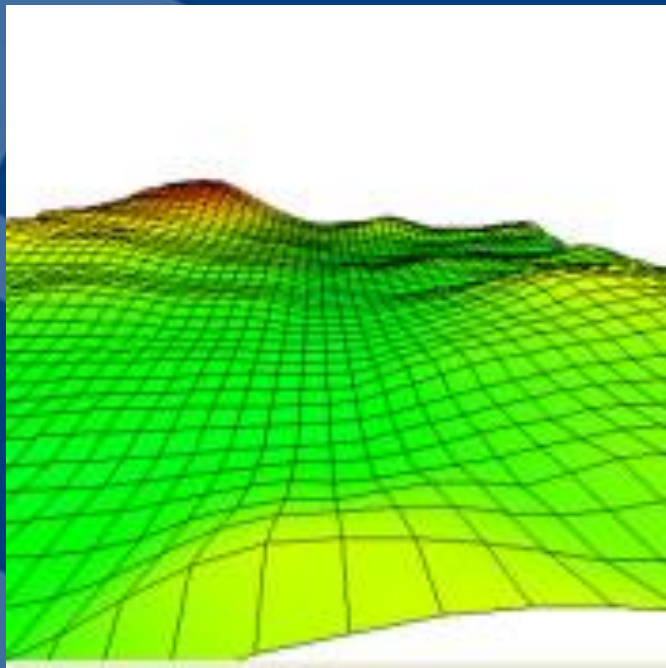


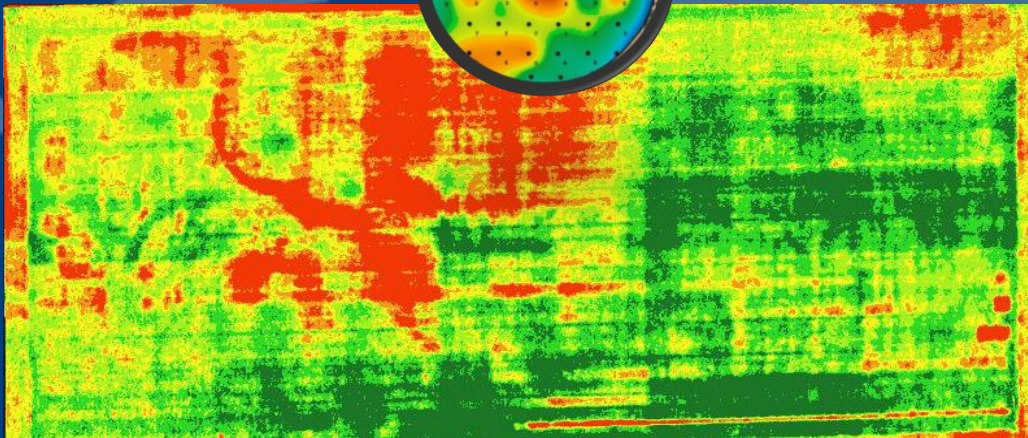
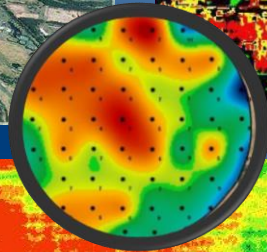
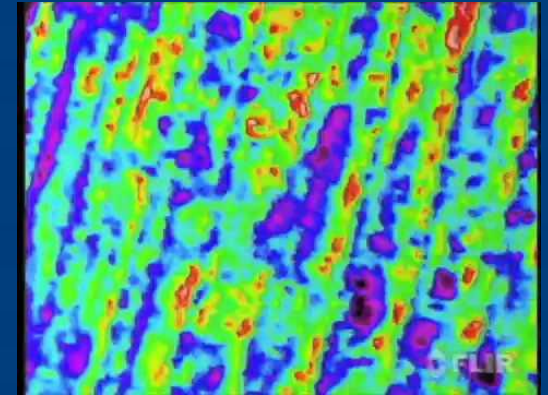
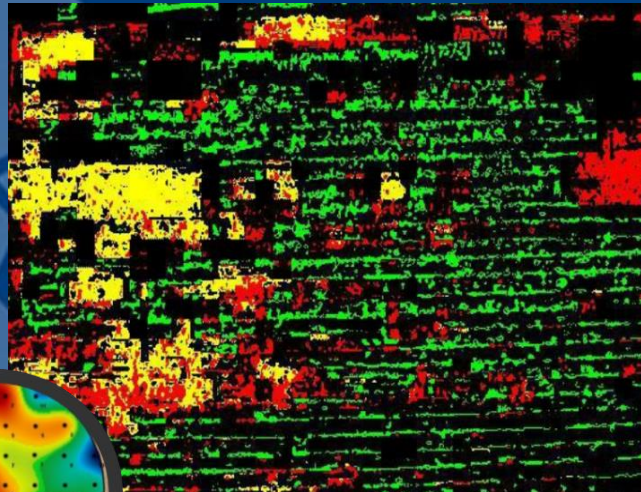
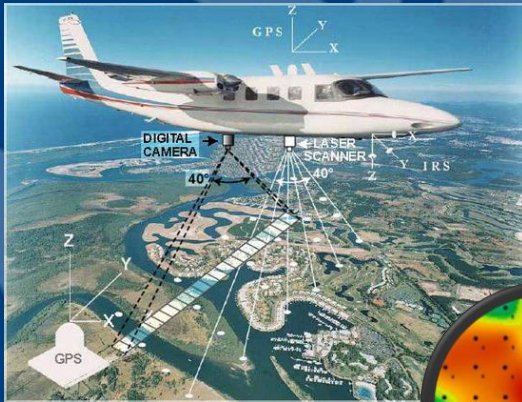
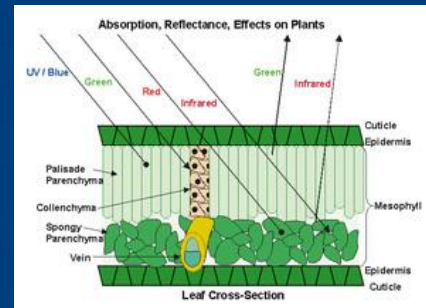
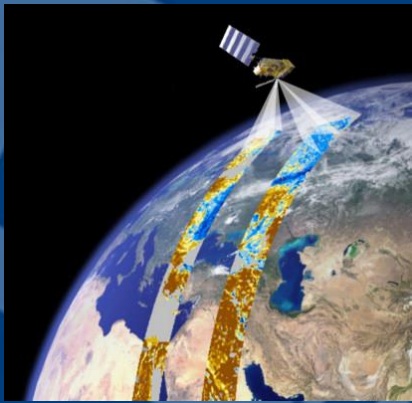


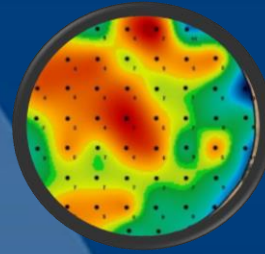
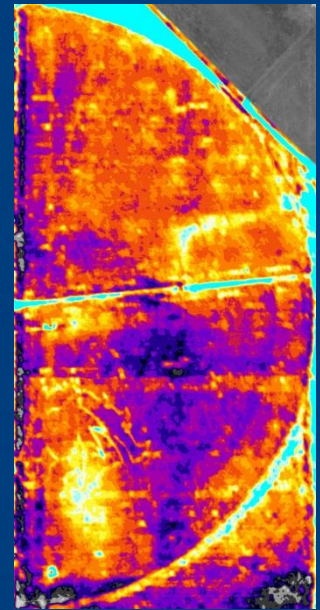
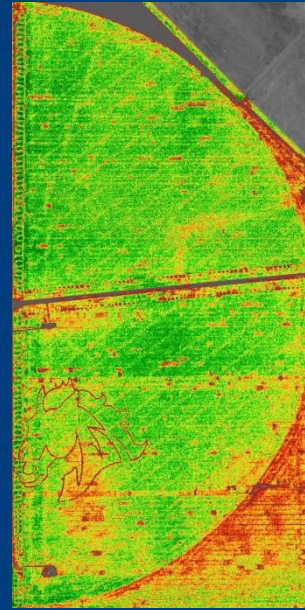


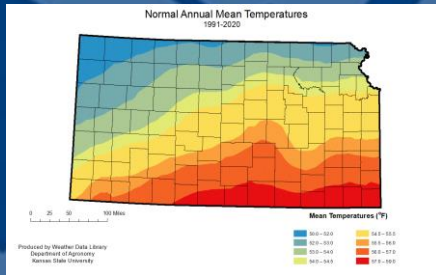
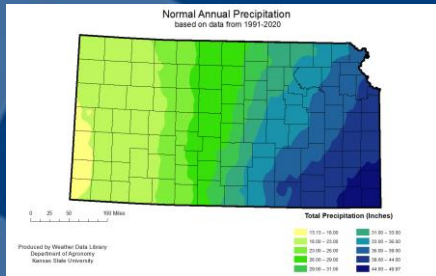


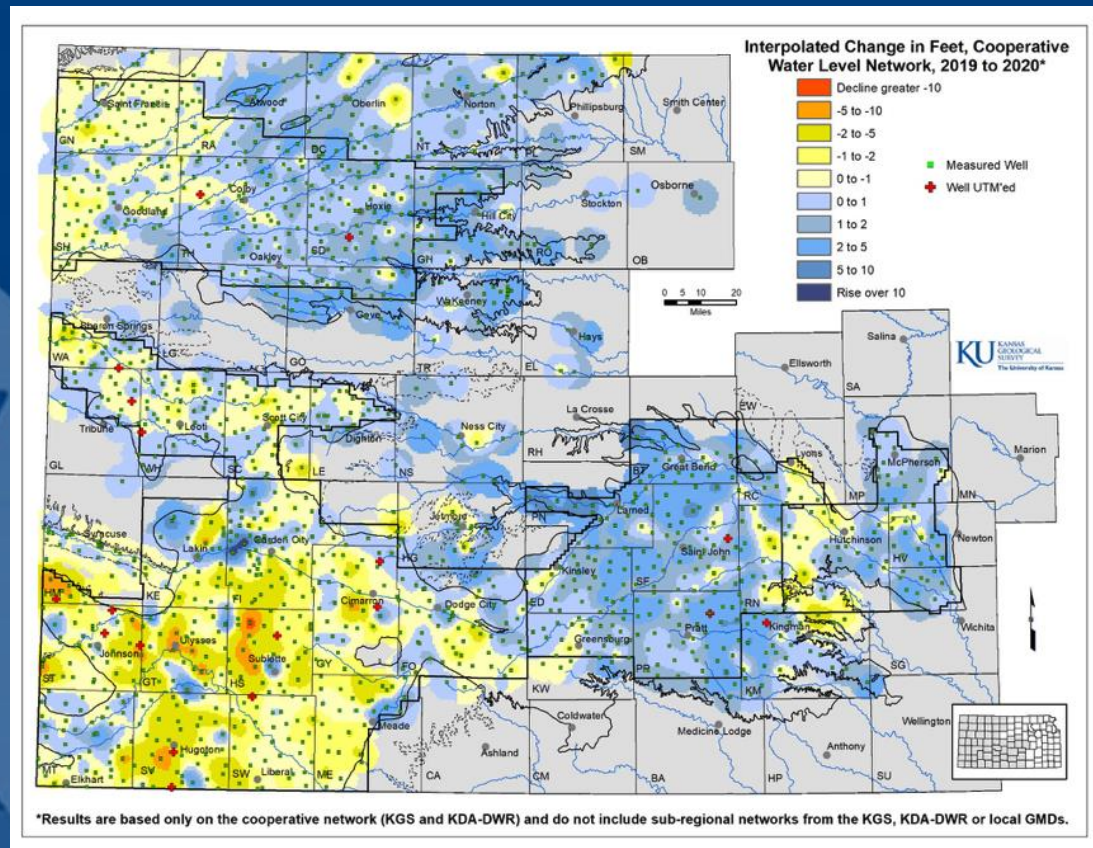
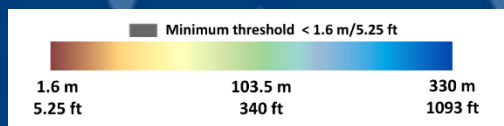
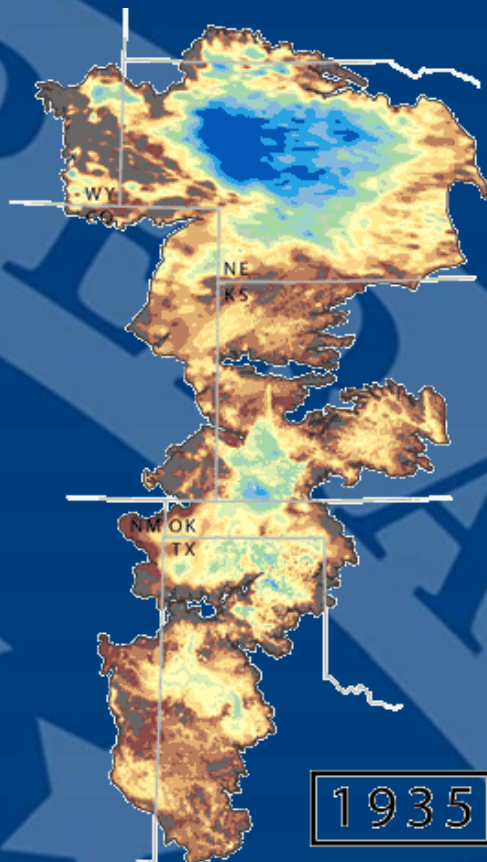


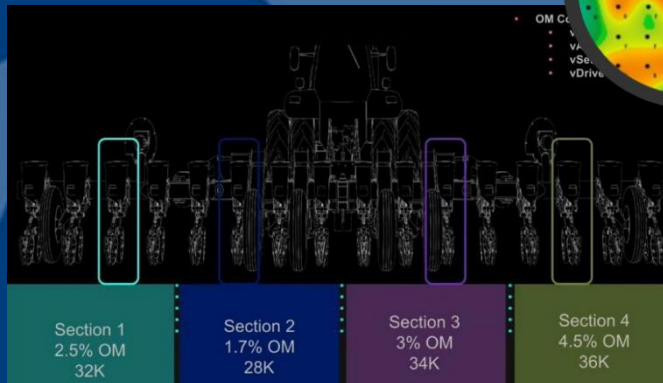
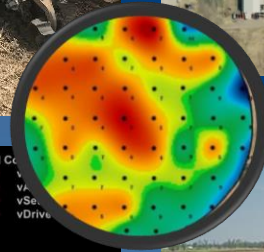


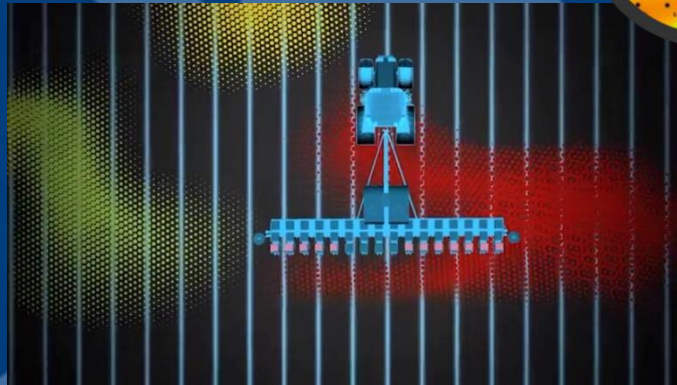
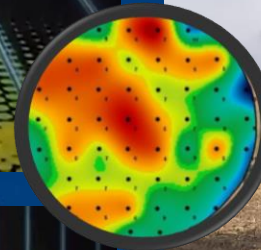
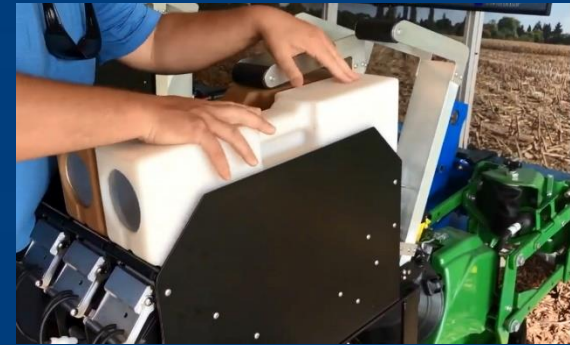
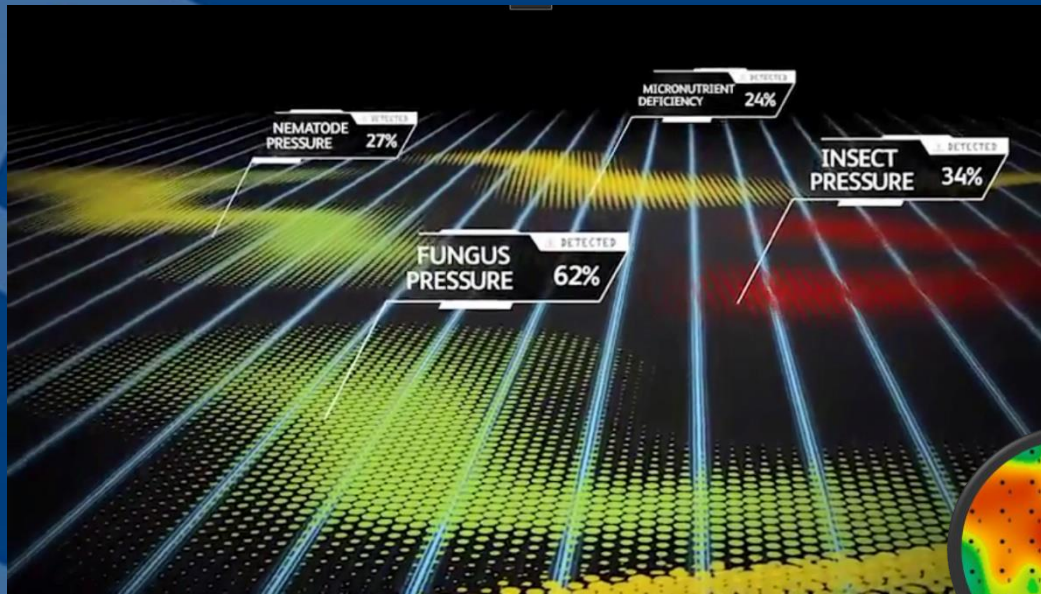


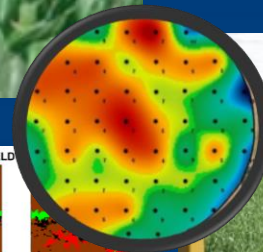
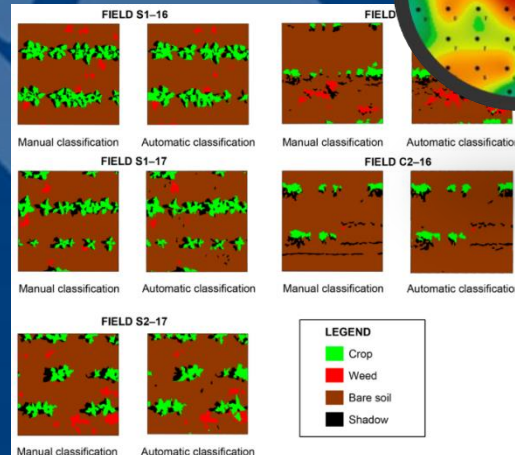
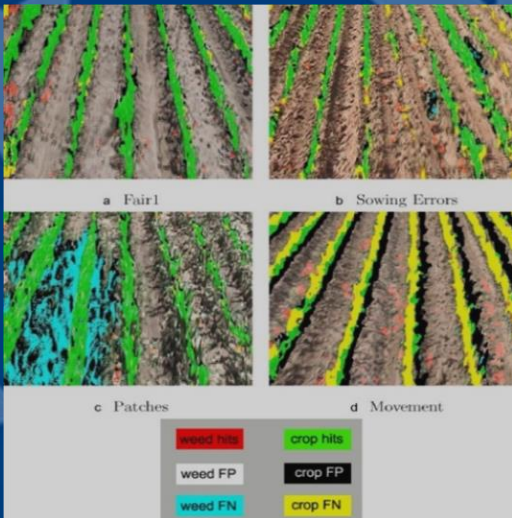
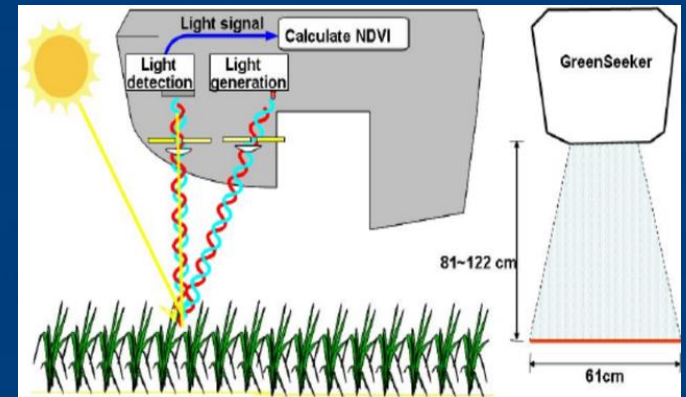


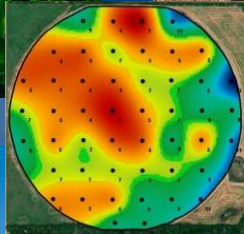


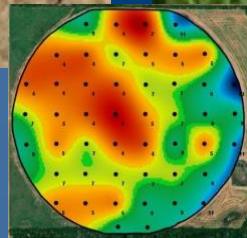


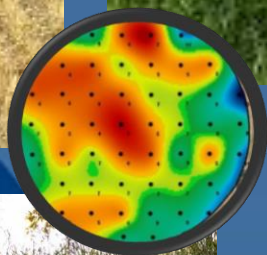


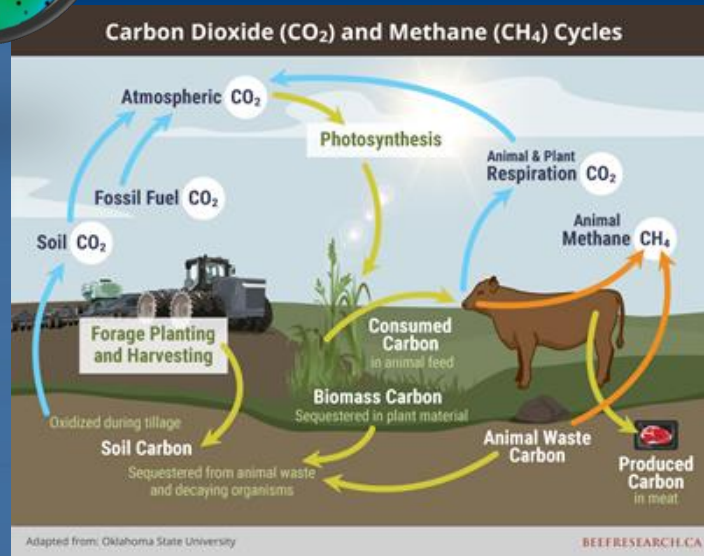
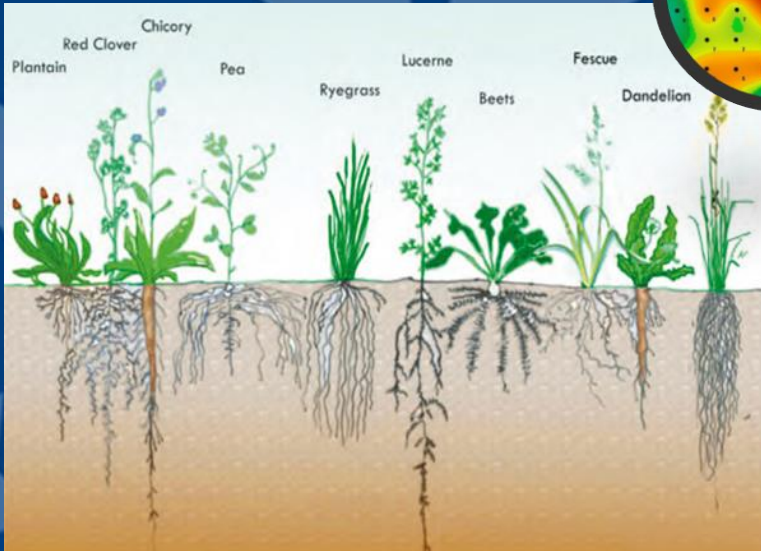
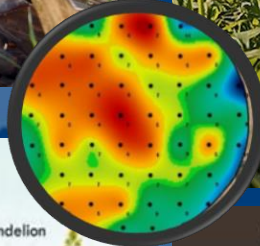
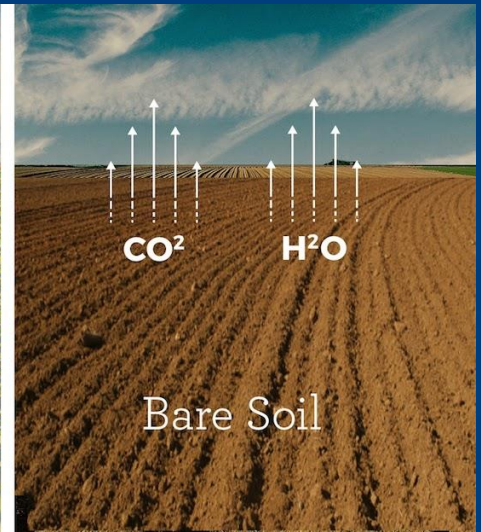
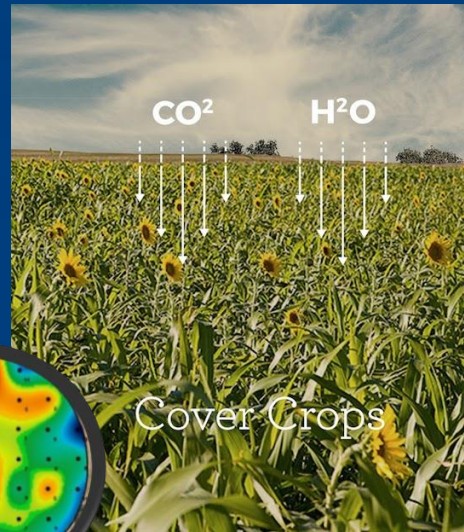


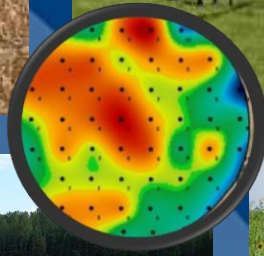


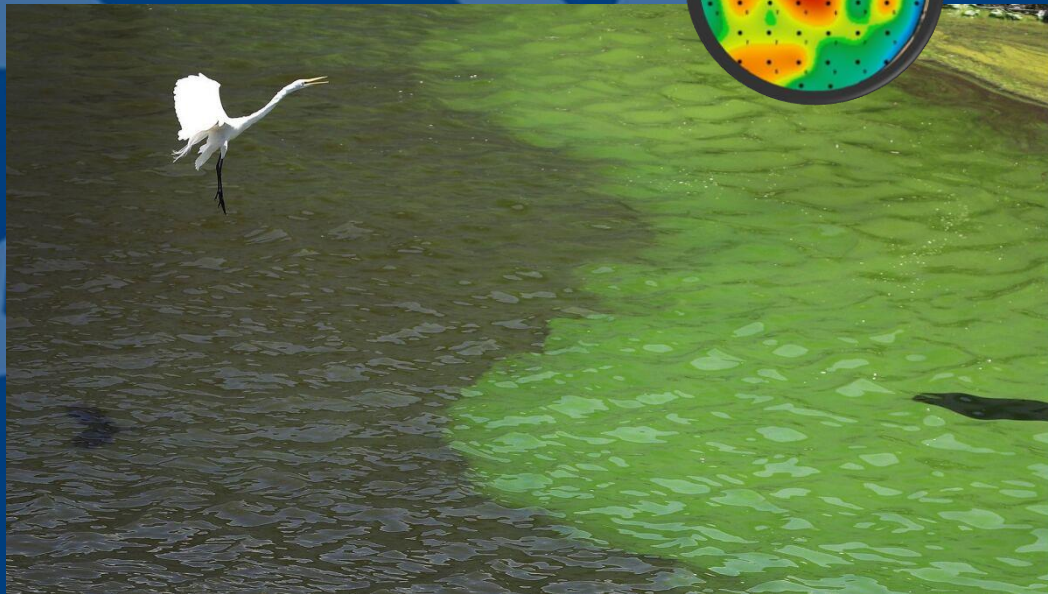
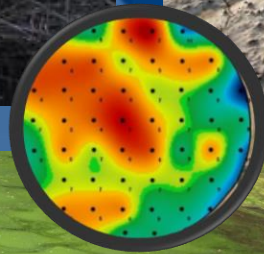


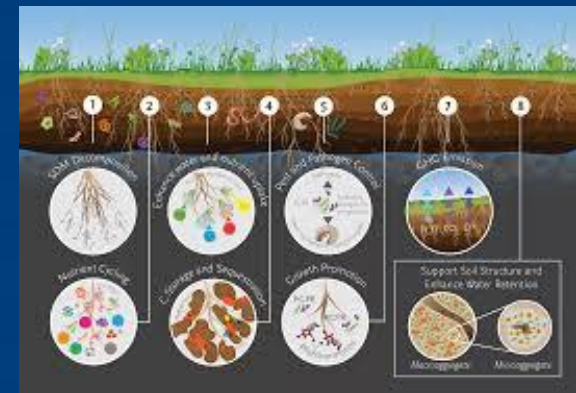
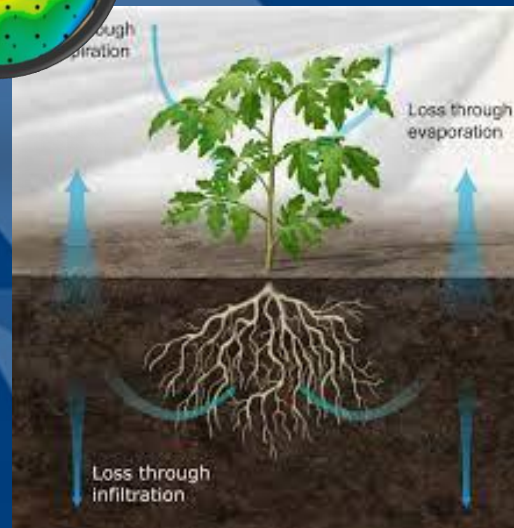
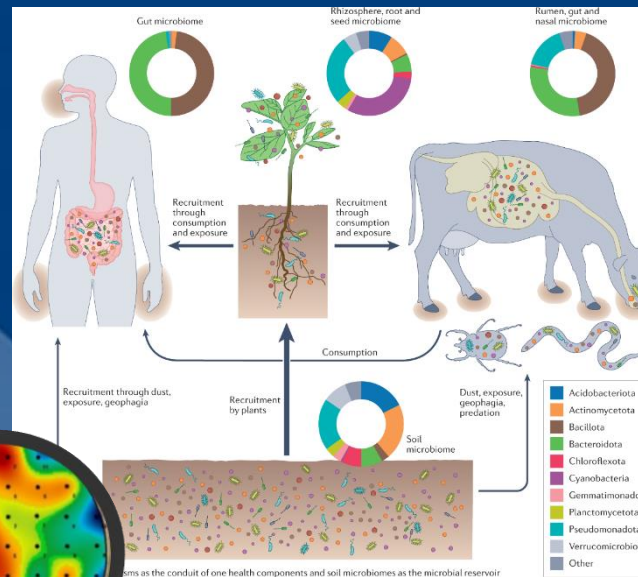
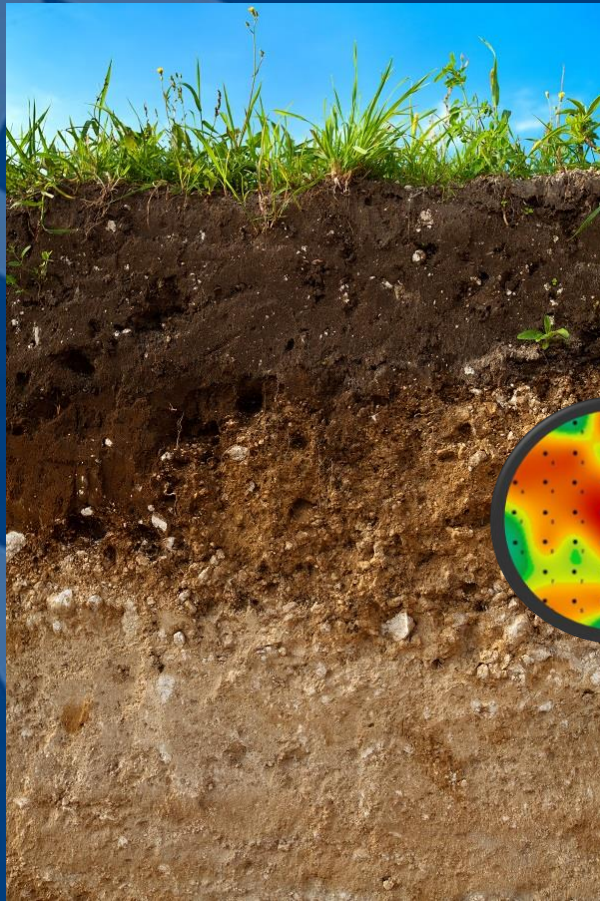














Education



- WISE Tours
- Field Days
- Product/Service Demos



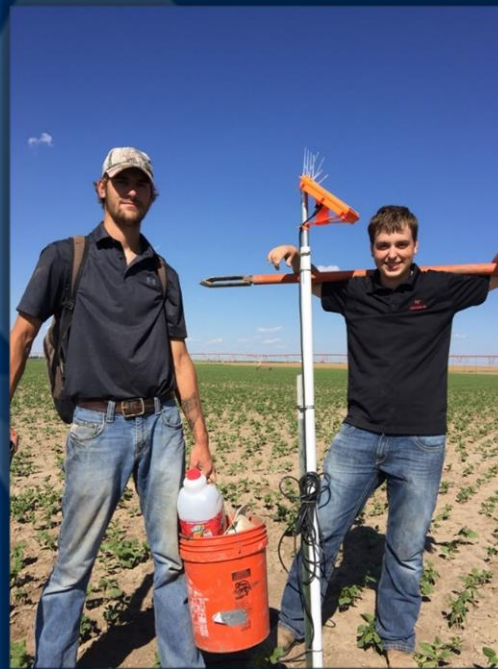
Education

- Producer Training
- Stakeholder Round-table Meetings



Education

- Workforce Development
- Higher-Education



Education



- Agency/Organization Coordination
- Agency/Organization Training
- Innovation Cost-share Programs



Program Overview

- Alumni
- Regional Round-table Discussions
- Implementation and Research
- Policy Advisory Source



Questions?



Thank you!

Website: <https://kwo.ks.gov/projects/water-technology-farms>

Wes McCary

Tech Projects Coordinator

Phone: 970-290-5031

Email: weston.mccary@kwo.ks.gov



Follow WISE on FaceBook



Follow WISE on Twitter

