

Kansas Water Authority

Conference Call/Virtual Meeting June 9, 2021

Options For Audio:

- **Use Computer Audio via Zoom**
or
- **Use your phone:**

Dial: (346) 248-7799

Meeting ID: 914 8668 3385

Passcode: 723146



CONFERENCE CALL/MEETING AGENDA

<i>Time</i>	<i>Agenda Item</i>	<i>Presenter</i>	<i>KWA Advice</i>	<i>KWA Decision</i>	<i>Page No.</i>
9:00 am	Call to Order/Roll Call	Dawn Buehler	--	--	--
9:05 am	Approval of Meeting Minutes	Dawn Buehler			
	May 18, 2021 Meeting (Conference Call/Zoom)			X	2
9:10 am	PWS Committee Update	Nathan Westrup	X		
	Water Marketing Rate Setting Discussion/Preview		X		
9:20 am	RAC Membership Drive Update	Matt Unruh	X		
9:30 am	Legislative Update				
	Water Infrastructure Funding - Draft message to Gov./Legis.	Connie Owen		X	
	House Water Committee Interim Summer Session Update	Matt Unruh	X		
9:40 am	Vision/Kansas Water Plan Update				
	Remaining Schedule & Overview of Public Comment Process	Kirk Tjelmeland	X		*
10:00 am	Federal Updates	Matt Unruh	X		
10:15 am	U.S. Corps of Engineers Informational Presentation				
	Reservoir Sediment Management	John Shelley	X		
10:35 am	Federal Cooperative Agreements (USGS)	Josh Olson		X	
	Streamgaging Network	Josh Olson		X	4
	Kansas River Water Quality Monitoring	Josh Olson		X	4
	Neosho River Sediment Monitoring	Josh Olson		X	4
	WQ Monitoring on Republican River at Clay Center	Josh Olson		X	5
	HABs in Rivers Study	Josh Olson		X	5
10:50 am	KWA Member Discussion	Dawn Buehler	X		
	Ex-Officio Roundtable Introductions				
11:30 am	Director's Report	Connie Owen	X		
11:40 am	Agency Updates				
11:55 am	New Business				
12:00 pm	Adjourn				

Call to Order/Roll Call

Call to Order/Roll Call; *Dawn Buehler*

Minutes

Presented by: Dawn Buehler



Action Needed

Approval of minutes from:

May 18, 2021*

*Webinar/Conference Call

PWS Committee Update

Presented by: Nathan Westrup

- Water Marketing Program

Statutory Rate Components

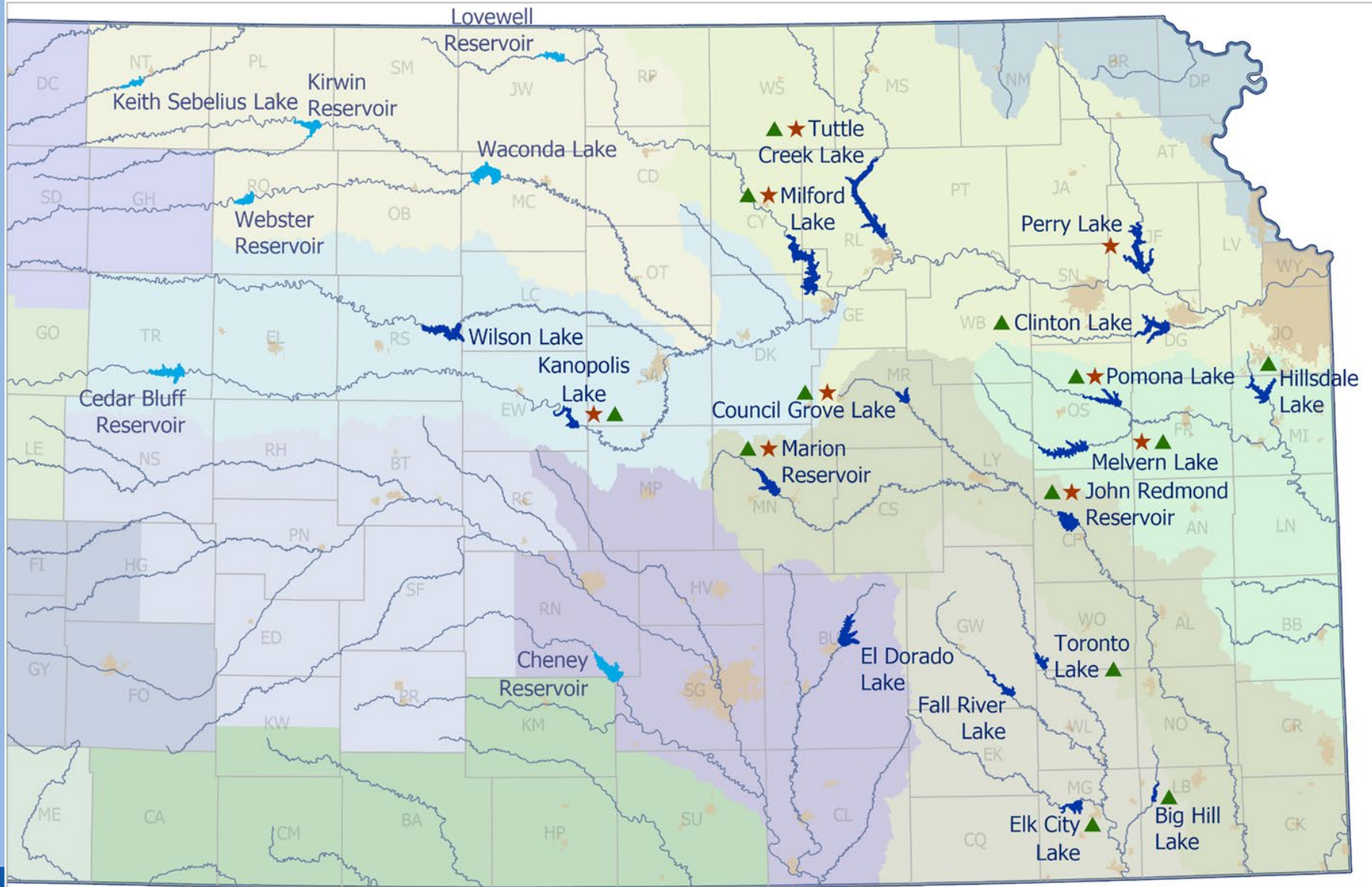
- An amount necessary to repay capital costs
- An amount as interest on money advanced from the State General Fund (not an active component)
- Administration and enforcement expenses
- Operation, maintenance, and repair costs
- An amount necessary to meet the needs of the program as shown in the *Water Marketing Program Capital Development and Storage Maintenance Plan* approved by the Kansas Water Authority

Annual Variable Rate

- The rate fixed by the Director shall be approved by the KWA on or before July 15 of each calendar year
- The rate shall take effect on January 1 of the following year
- The Director shall consider the state's conservation water supply capacity from all sources as though impounded in one single reservoir

Lake	Contract No.	Customer	Annual Contract Maximum Gallons	2021 Maximum Gallons	Rate \$/1000 Gallons	Contract End Date
Big Hill Lake	98-1	PWWS Dist. No. 4	454,700,000	436,481,400	\$0.436	4/17/2038
Clinton Lake	79-1	Douglas County Rural Water Dist. No. 3	684,273,174	684,273,174	\$0.10	12/13/2021
	79-2	Douglas County Rural Water Dist. No. 6	23,759,981	23,759,981	\$0.10	12/13/2021
	90-2	Douglas County Rural Water Dist. No. 6	9,503,298	9,503,298	\$0.436	1/1/2031
	95-3	Douglas County Rural Water Dist. No. 5	128,298,541	128,298,541	\$0.436	10/26/2035
	19-1	City of Lawrence	4,988,000,000	4,988,000,000	\$0.436	12/29/2059
Council Grove Lake	81-2	City of Emporia	1,095,000,000	1,095,000,000	\$0.10	10/21/2023
	93-4	City of Council Grove	150,000,000	30,000,000	\$0.436	9/13/2033
Elk City Lake	81-5	City of Coffeyville	300,000,000	300,000,000	\$0.10	12/16/2023
	99-5	Coffeyville Resources	608,000,000	608,000,000	\$0.436	12/3/2039
	12-7	Coffeyville Resources	400,000,000	400,000,000	\$0.436	8/9/2051
Hillsdale Lake	81-1	Miami County Rural Water Dist. No. 2	239,440,000	239,440,000	\$0.10	10/21/2023
	13-1	Hillsdale Area Water Cooperative	5,308,560,000	4,117,781,000	\$0.436	12/31/2052
John Redmond Lake	17-2	Evergy - Wolf Creek Generating Station	9,368,000,000	9,368,000,000	\$0.436	12/31/2022
Kanopolis Lake	01-2	Post Rock Rural Water District	400,000,000	390,000,000	\$0.436	7/12/2041
Marion Lake	80-1	City of Hillsboro	300,000,000	300,000,000	\$0.10	12/22/2021
	81-4	City of Marion	237,500,000	237,500,000	\$0.10	10/3/2023
	99-1	City of Peabody	60,000,000	60,000,000	\$0.436	4/9/2039
Melvern Lake	93-3	City of Osage City	100,000,000	100,000,000	\$0.436	4/22/2033
	93-2	City of Burlingame	65,000,000	65,000,000	\$0.436	7/15/2033
	93-1	PWWS Dist. No. 12	547,430,000	450,000,000	\$0.436	1/1/2035
	05-6	City of Harveyville	25,000,000	25,000,000	\$0.436	8/11/2045
Milford Lake	80-2	Evergy- Jeffrey Energy Center	7,300,000,000	7,300,000,000	\$0.10	12/5/2022
Perry Lake	N/A	N/A	N/A	N/A	N/A	N/A
Pomona Lake	05-5	Osage County Rural Water Dist. No. 3	55,600,000	55,600,000	\$0.436	7/10/2048
Toronto Lake	N/A	N/A	N/A	N/A	N/A	N/A
Tuttle Creek Lake	N/A	N/A	N/A	N/A	N/A	N/A

Federal Reservoirs in Kansas



RAC Membership Drive Update

Presented by: Matt Unruh

- 2021 Membership Drive



REGIONAL ADVISORY COMMITTEE MEMBERSHIP DRIVE

Applications are now being accepted for those who would like to participate as a member of one of the 14 RACs which are established by the Kansas Water Authority. Deadline 6/15.

[Read More](#)

Legislative Update

Presented by: Connie Owen & Matt Unruh

- Water Infrastructure Funding – Draft message to Governor & Legislature

The Kansas Water Authority officially encourages Governor Kelly and the Kansas Legislature to secure funds from the Biden Administration's recent and upcoming federal relief, recovery and infrastructure funding, for the purposes of funding sorely-needed water projects such as the Water Injection Dredging Pilot Project at Tuttle Creek Lake.

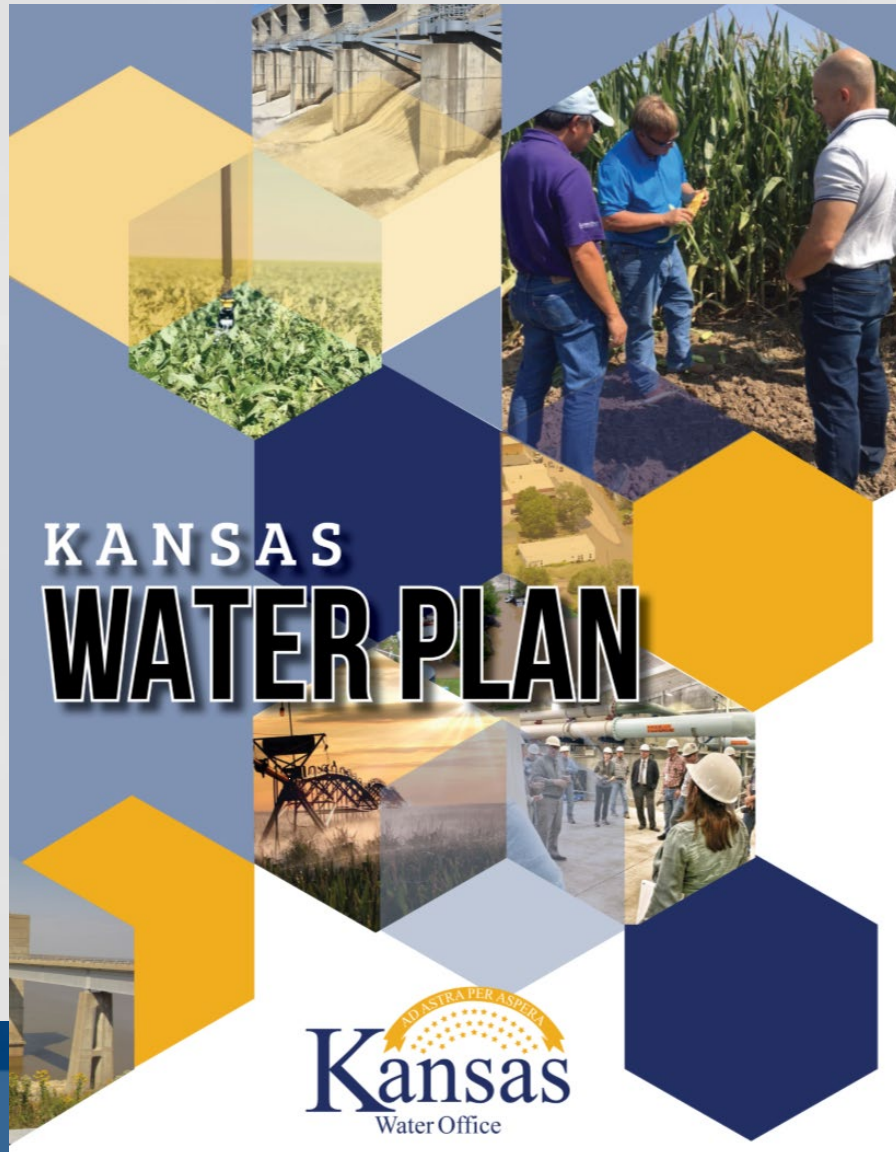
Legislative Update

Presented by: Connie Owen & Matt Unruh

- House Water Committee Interim Summer Session Update

Kansas Water Plan Update

Presented by:
Kirk Tjelmeland



Remaining Timeline

State Water Plan Update Key Planning Dates

Action	KWA Meeting	Start or Due Date
KWA Review/Approval of inclusion of Regional Goals/Action Plans within draft Water Plan	April 26, 2021	April KWA Mtg
KWA Review/Approval of inclusion of Guiding Principle Sections within draft Water Plan	May 18, 2021	May KWA Mtg
KWA Approval for KWO to post full draft Water Plan for public review	June 23, 2021	June KWA Mtg
Full Draft Water Plan posted to KWO website for public review		Mid-Late June
Draft Water Plan Public Review/Comment Period		Mid-Late June
Public Hearing Date (East)		Mid-Late July
Public Hearing Date (West)		Mid-Late July
Comments Accepted Beyond Public Hearings		Mid-Late July
Review of comments from public comment period/public hearings and incorporation of comments in draft Water Plan		August KWA Mtg
KWA review and approval of Final State Water Plan	August	August KWA Mtg
Final cleanup work on State Water Plan		--
Updated State Water Plan Posted to KWO Webpage		Mid August

Kansas Water Plan Update

Presented by: Kirk Tjelmeland

- Public Comment Process

Future KWA Review/Action:

- June:

- KWA Approval for KWO to post full draft Water Plan for public review
 - *Zoom meeting 6/23*

- August:

- Review of comments from public comment period/public hearings and incorporation of comments in draft Water Plan
- KWA review and approval of Final State Water Plan

Federal Updates

Presented by: Matt Unruh

U.S. Corps of Engineers Informational Presentation

Presented by: John Shelley

- Reservoir Sediment Management

Federal Cooperative Agreements - USGS

Presented by: Josh Olson



Streamgaging

- Near real-time, continuous monitoring of stream and river conditions throughout the state
- Flow monitoring at 59 surface water and 3 ground water stations
- Data posted and updated online through the USGS National Water Information System
- Expected KWO contribution for SFY22 is \$413,580



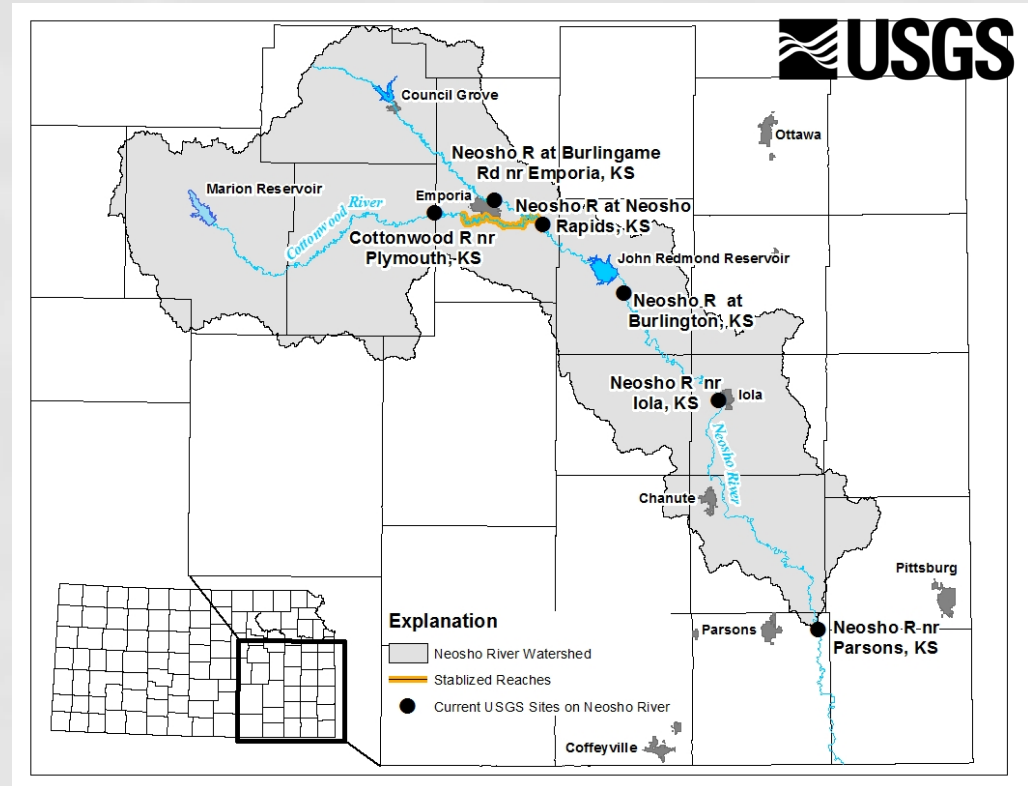
Kansas River Water Quality Monitoring

- Real-time monitoring and notification of changing water-quality conditions
 - Nutrients, sediment, bacteria, cyanobacteria
- Continuous water quality monitoring and discrete sample collection on the Kansas River at Wamego, Topeka, and De Soto
- Current and past partners have included KDHE, The Nature Conservancy, WaterOne, Topeka, Olathe, Manhattan, Lawrence, De Soto, USACE
- Expected KWO contribution for SFY22 is \$30,000



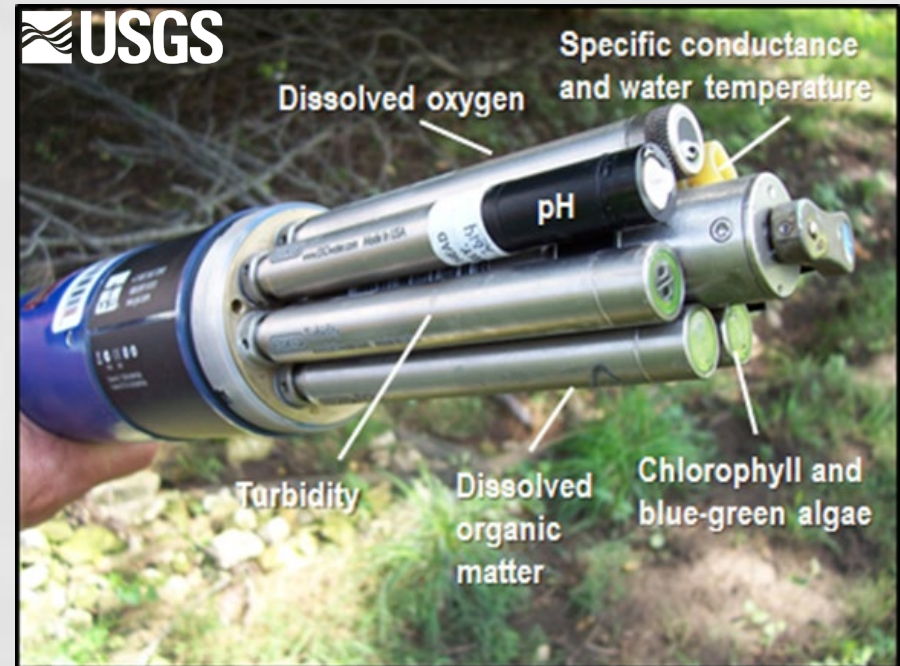
Neosho River Sediment Monitoring

- Monitoring of turbidity conditions upstream and downstream of John Redmond Reservoir
- Evaluate sediment load and trapping efficiency
- USGS Scientific Investigations Report: Sediment Flux from Upstream and Through John Redmond Reservoir, East-Central Kansas, 2010–19
- Expected KWO contribution for SFY22 is \$42,600



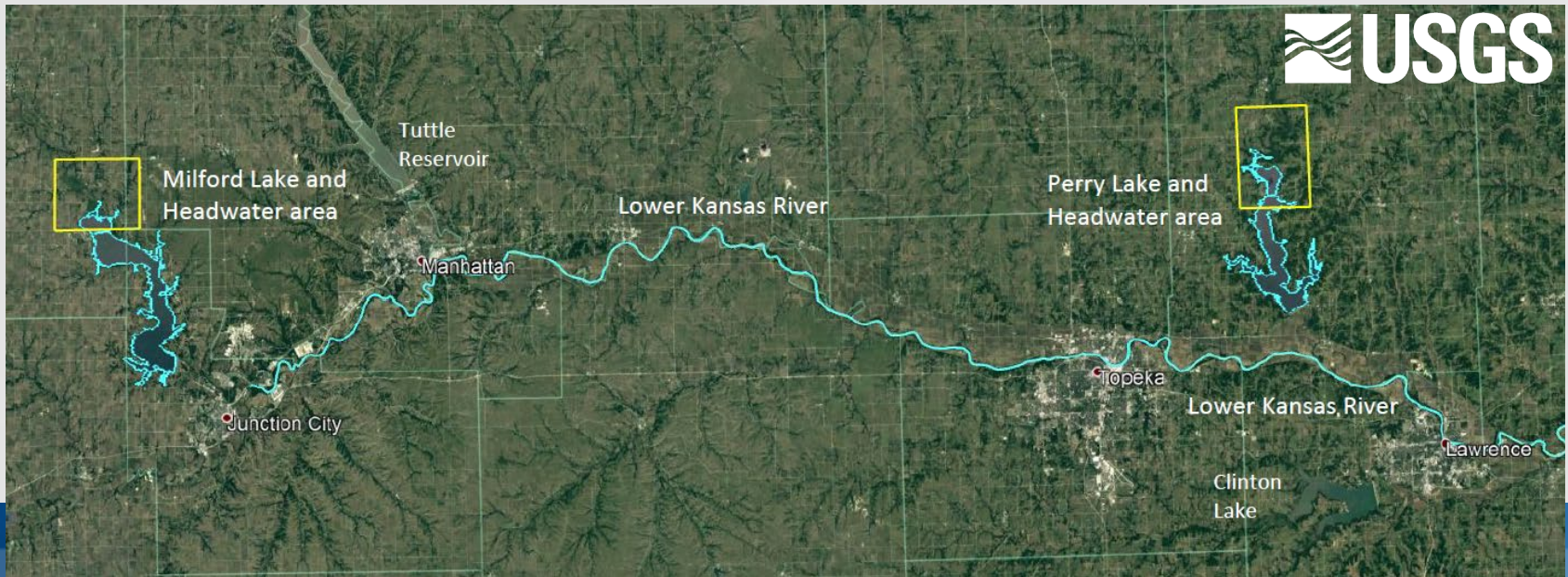
Republican River at Clay Center Monitoring

- Characterize sediment, nutrients, and water quality conditions entering Milford Lake
- Continuous water quality monitoring and discrete sediment and nutrient sampling at Republican River at Clay Center, KS (06856600)
- Supports monitoring associated with Milford RCPP project
- Expected KWO contribution for SFY22 is \$85,345



HABs in Rivers Study

- Occurrence of HABs and algal toxins in slow-moving streams, wetlands, and oxbows and downstream impacts on reservoirs and large rivers
- Focus on Perry and Milford Reservoirs and the floodplain of the lower Kansas River
- Evaluate use of satellite imagery for identifying and monitoring HABs and algal toxins
- 3-year study; expected KWO contribution for SFY22 is \$16,000



Proposed Action Today:

- *The Kansas Water Office recommends the KWA give approval to the Director to enter into agreements with the U.S. Geological Survey for the Streamgaging Network, Kansas River Water Quality Monitoring, Neosho River Sediment Monitoring, Monitoring on Republican River at Clay Center above Milford Lake, and HABs in Rivers Study.*

KWA Member Discussion

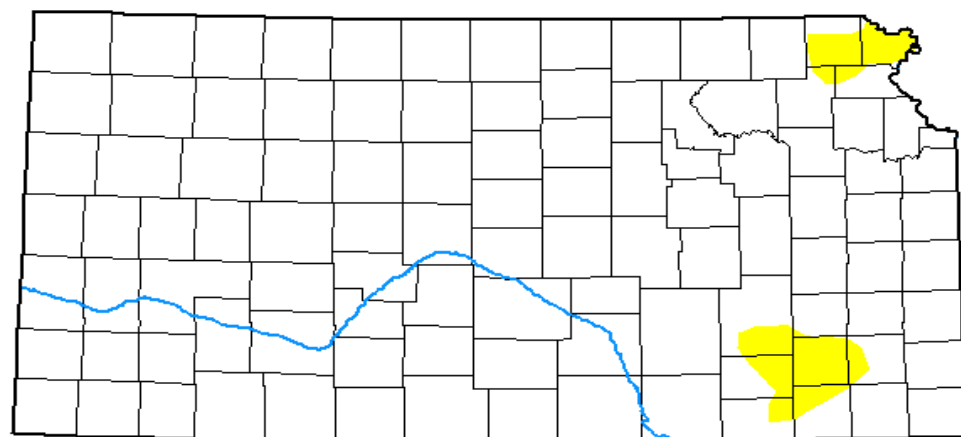
Presented by: Dawn Buehler

- Ex-Officio Roundtable Introductions

Director's Report

- Reservoir Levels & Drought Update
- *Other Agency Updates*

U.S. Drought Monitor Kansas



Author:

Brian Fuchs
National Drought Mitigation Center



droughtmonitor.unl.edu

June 1, 2021
(Released Thursday, Jun. 3, 2021)
Valid 8 a.m. EDT

Drought Conditions (Percent Area)

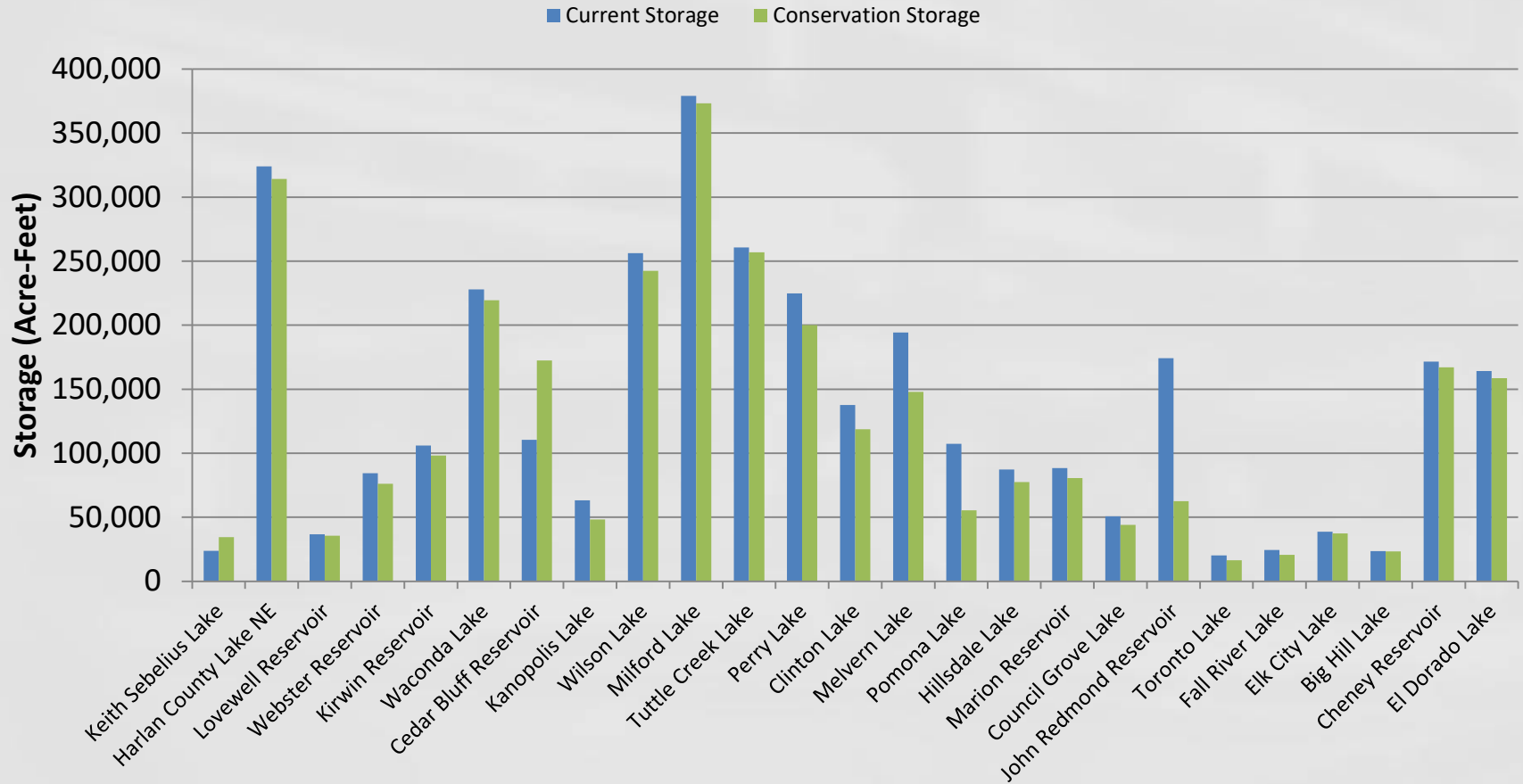
	None	D0	D1	D2	D3	D4
Current	96.93	3.07	0.00	0.00	0.00	0.00
Last Week 05-25-2021	74.25	25.75	0.00	0.00	0.00	0.00
3 Months Ago 03-02-2021	42.97	16.77	23.80	6.59	9.88	0.00
Start of Calendar Year 12-29-2020	18.58	21.63	40.10	9.68	10.01	0.00
Start of Water Year 09-29-2020	22.82	60.25	12.50	3.74	0.68	0.00
One Year Ago 06-02-2020	49.84	22.70	15.83	9.03	2.60	0.00

Intensity:

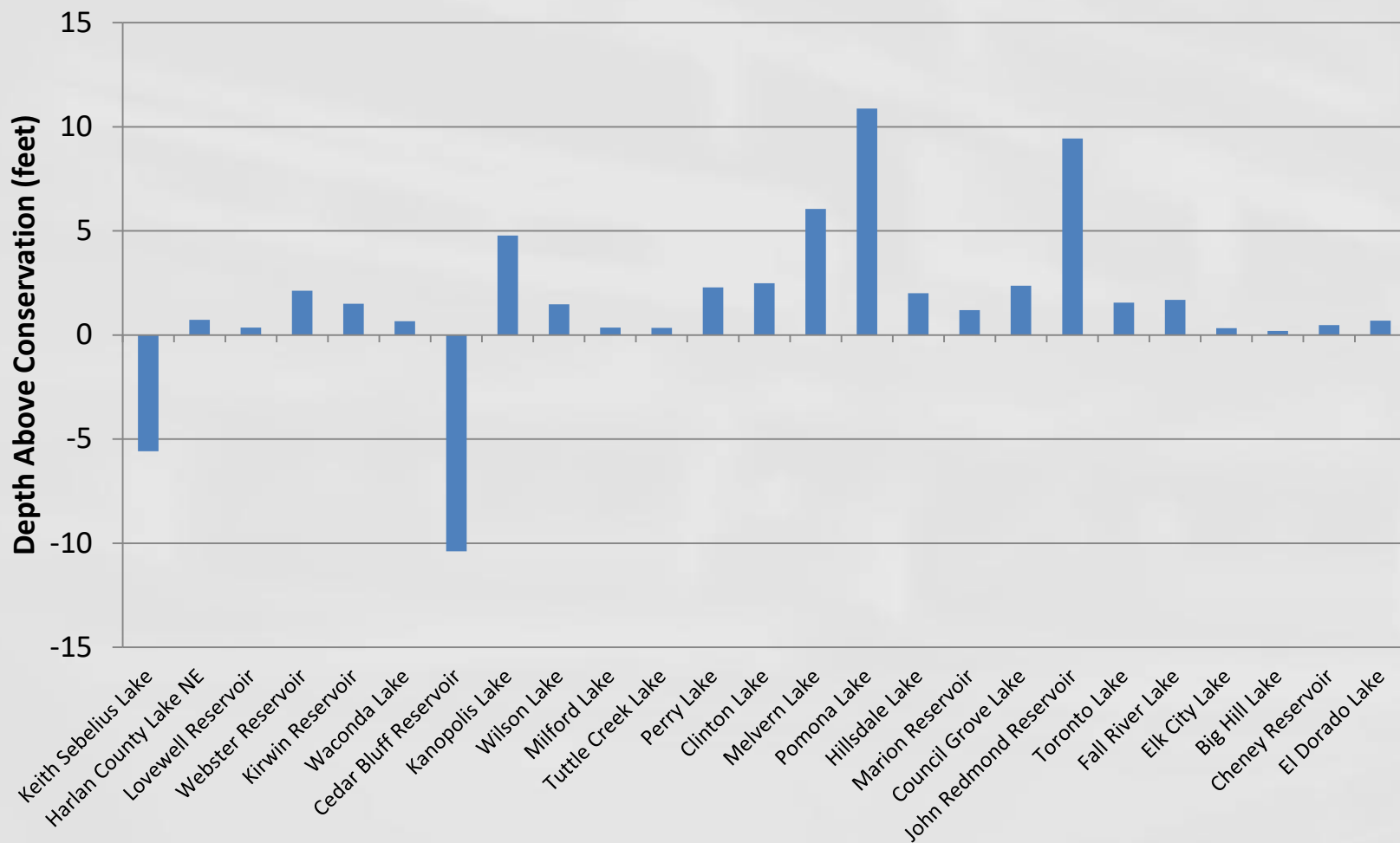
None	D2 Severe Drought
D0 Abnormally Dry	D3 Extreme Drought
D1 Moderate Drought	D4 Exceptional Drought

The Drought Monitor focuses on broad-scale conditions. Local conditions may vary. For more information on the Drought Monitor, go to <https://droughtmonitor.unl.edu/About.aspx>

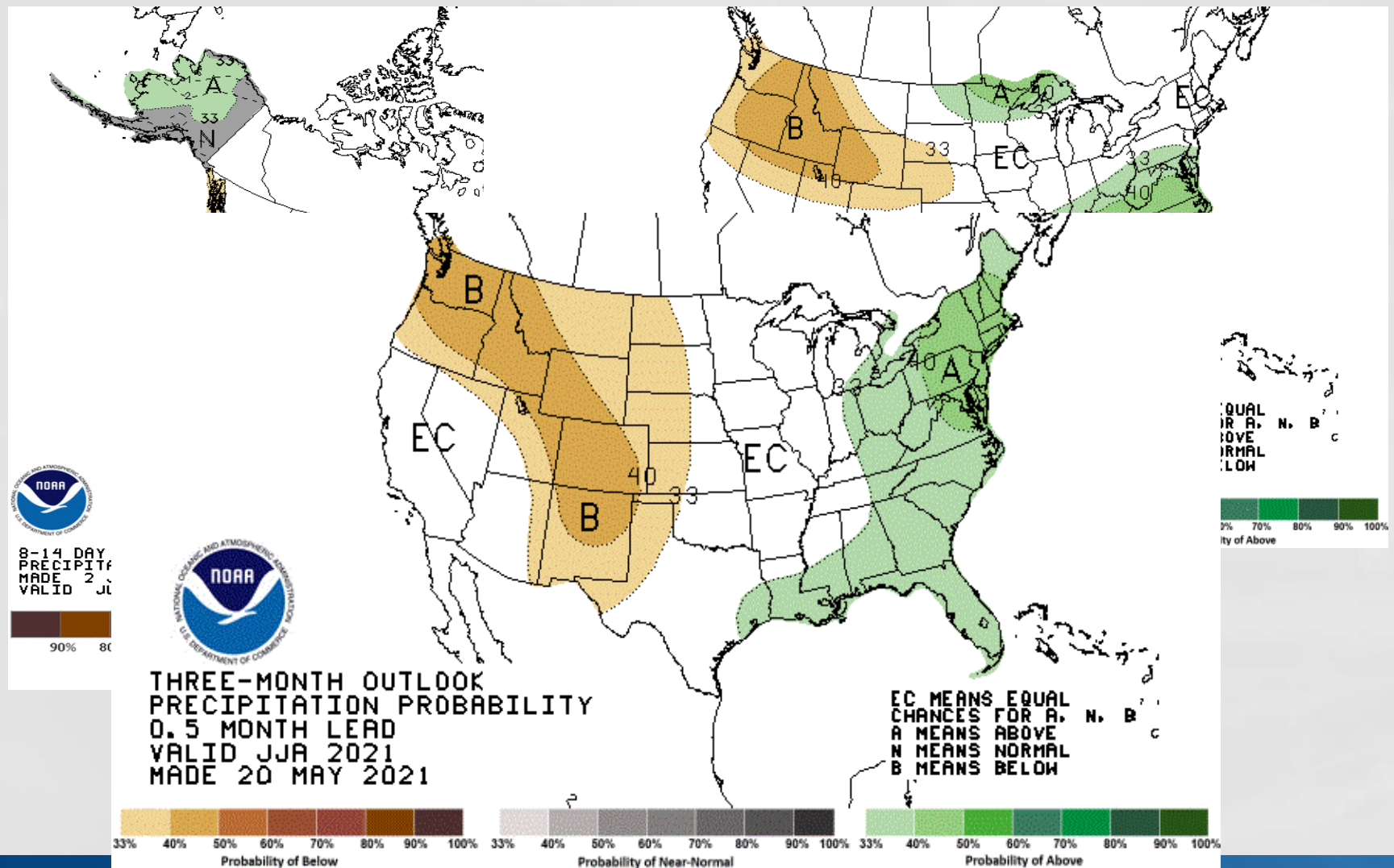
Current Storage



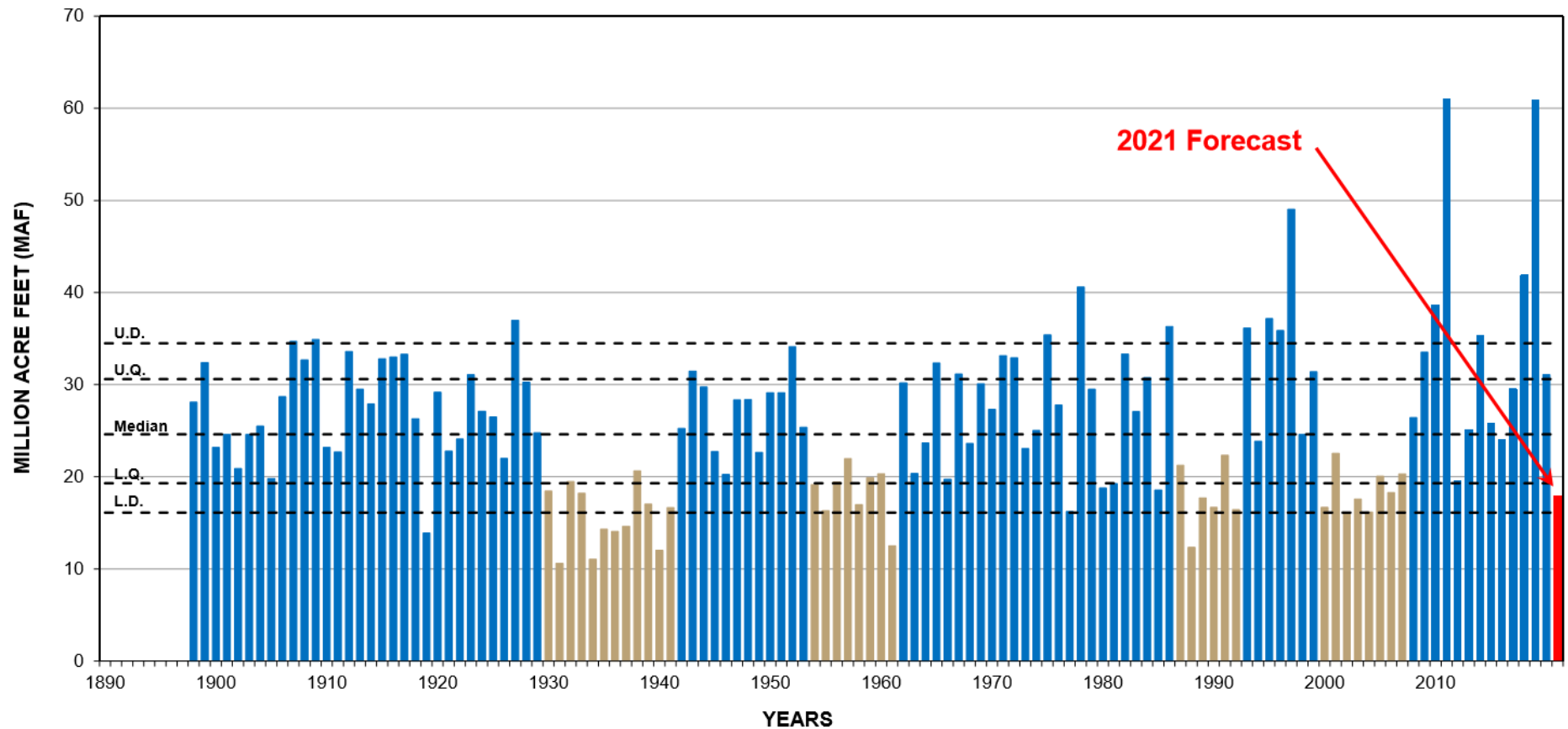
Reservoir Pool Levels



Climate Prediction Center - Outlooks



Annual Runoff (Above Sioux City, IA)



New Business

- Other items as needed

Adjourn

Upcoming KWA Meeting:

June 23, 2021