

# **KANSAS WATER AUTHORITY & REGIONAL ADVISORY COMMITTEES**

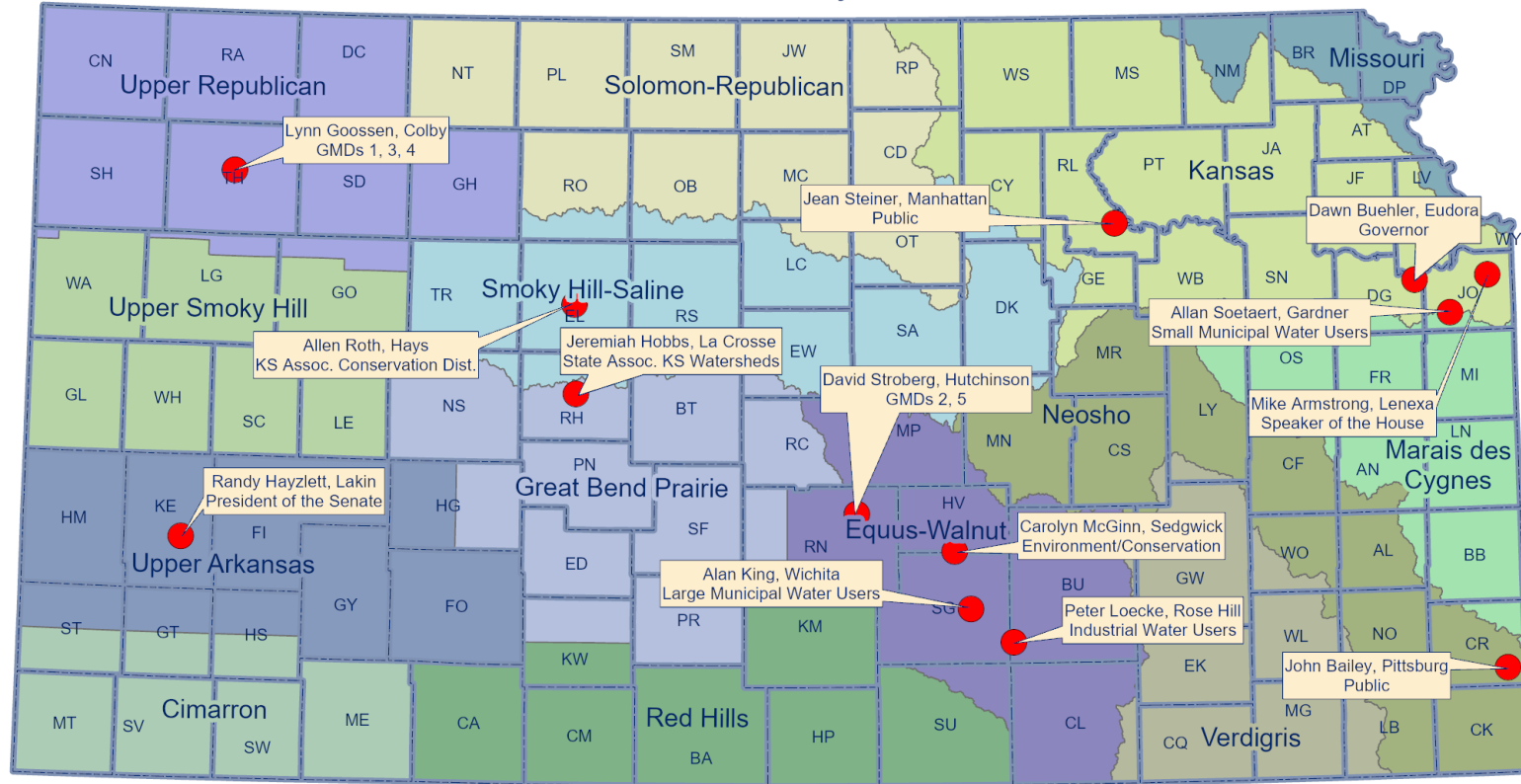
**Presentation to  
the House Committee on  
Water**

**January 24, 2023**

# Kansas Water Authority

- Established in 1981
- Statutorily within and a part of the KWO
- Provides leadership to ensure that water policies and programs address the needs of all Kansans
- Responsible for:
  - *Advising the Governor, Legislature and Director of the Kansas Water Office on water policy issues*
  - *Approving Kansas Water Plan*
  - *Develop recommendations for State Water Plan Fund expenditures*
  - *Approving federal contracts, administration regulations and legislation proposed by the KWO*
  - *Prepare and Issue the Annual Report to Governor and Legislature*

# Kansas Water Authority Members



Kansas Water Office  
December 2022

**Kansas Water Authority consists of 13 voting members who are appointed by the Governor or Legislative Leadership. State agency directors or appointees serve as ex-officio members.**

# Kansas Water Authority

## Voting Member Information

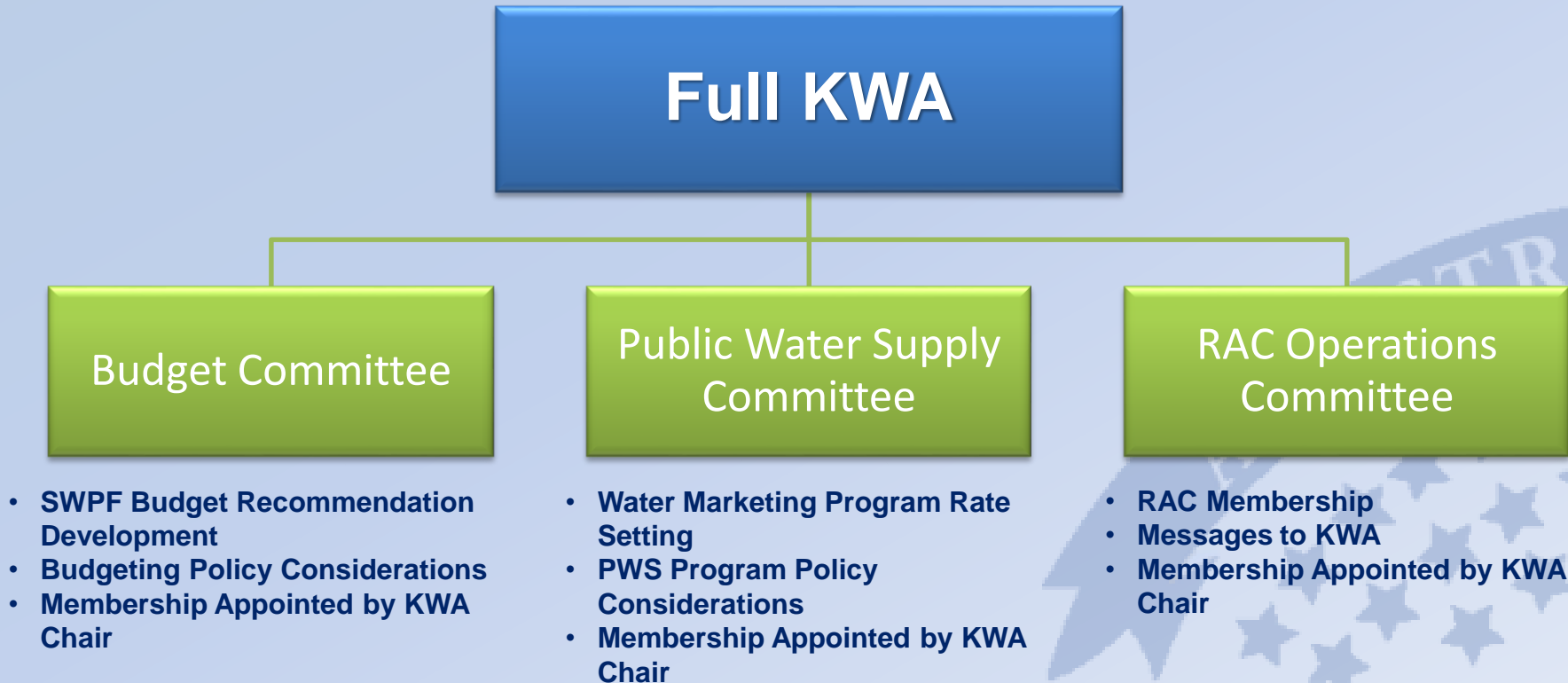
KWA Member	Represents	Appointment/Nominated For Appointment By
Dawn Buehler	Governor	Governor
Randy Hayzlett	President of the Senate	President of the Senate
Mike Armstrong	Speaker of the House	Speaker of the House
Lynn Goossen	Western Kansas GMDs	Governor/GMDs 1,3,4
David Stroberg	Central Kansas GMDs	Governor/GMDs 2,5
Allen Roth	Kansas Association of Conservation Districts	Governor/Kansas Association of Conservation Districts
Alan King	Large Municipal Water Users	Governor/League of Kansas Municipalities
Alan Soetaert	Small Municipal Water Users	Governor/Kansas Rural Water Association
John Bailey	Public	Governor
Jean Steiner	Public	Governor
Jeremiah Hobbs	State Association of Kansas Watersheds	Governor/State Association of Kansas Watersheds
Pete Loecke	Industry/Commerce	Governor/Kansas Chamber of Commerce
Carolyn McGinn	Conservation/Environment	Governor

# **Kansas Water Authority**

## **Ex-Officio Members**

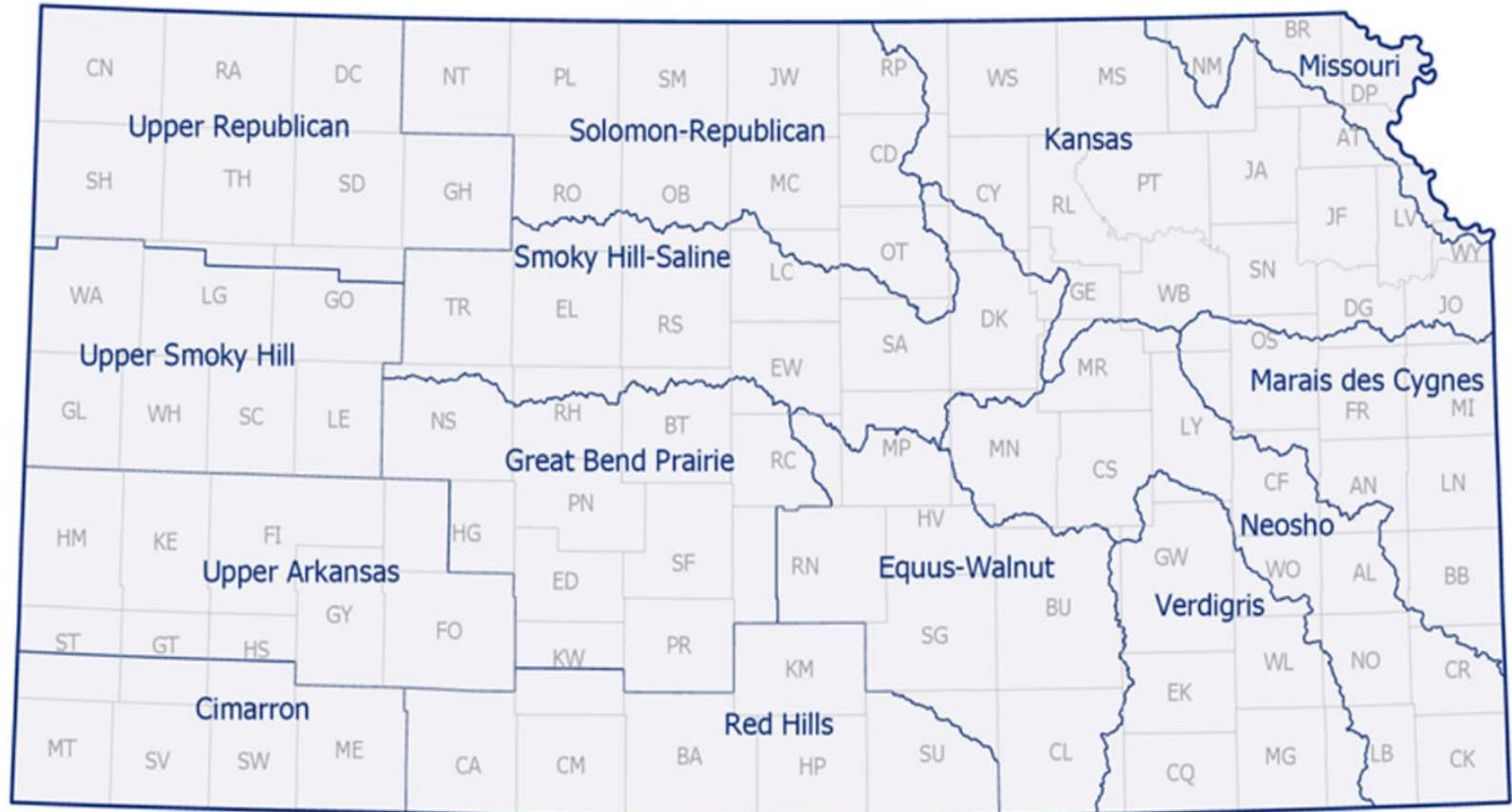
- **Earl Lewis**  
KS Dept. of Agriculture –  
Division of Water Resources
  - **Brad Loveless**  
KS Dept. of Wildlife, Parks &  
Tourism
  - **Mike Beam**  
KS Dept. of Agriculture
  - **Ernie Minton**  
Ag Experiment Station  
Kansas State University
  - **David Toland**  
KS Dept. of Commerce
  - **Connie Owen**  
Kansas Water Office
- **Andrew Lyon**  
KS Dept. of Agriculture –  
Division of Conservation
  - **Sara Baer**  
Kansas Biological Survey
  - **Susan Duffy**  
Kansas Corporation Commission
  - **Leo Henning**  
KS Dept. of Health & Environment
  - **Jay Kalbas**  
Kansas Geological Survey

# Kansas Water Authority Committee Structure



# Regional Advisory Committees

- **Established in 2014 by the KWA in association with Vision efforts**
  - *Previously known as Basin Advisory Committees*
- **Role of RACs:**
  - Advise KWO and KWA in identification of water-related problems, issues and concerns within their region
  - Advise KWO and KWA on issues under consideration for inclusion in the Kansas Water Plan
  - Advise KWO and KWA in the formulation of revisions to the section of the Kansas Water Plan corresponding to their region along with implementation priorities and actions
  - Serve as a link to the public in the region through interaction with various groups and individuals and communicate information on concerns and issues to citizens in the region
  - Serve as a link to water management entities in the region to facilitate discussion and input on issue development and implementation

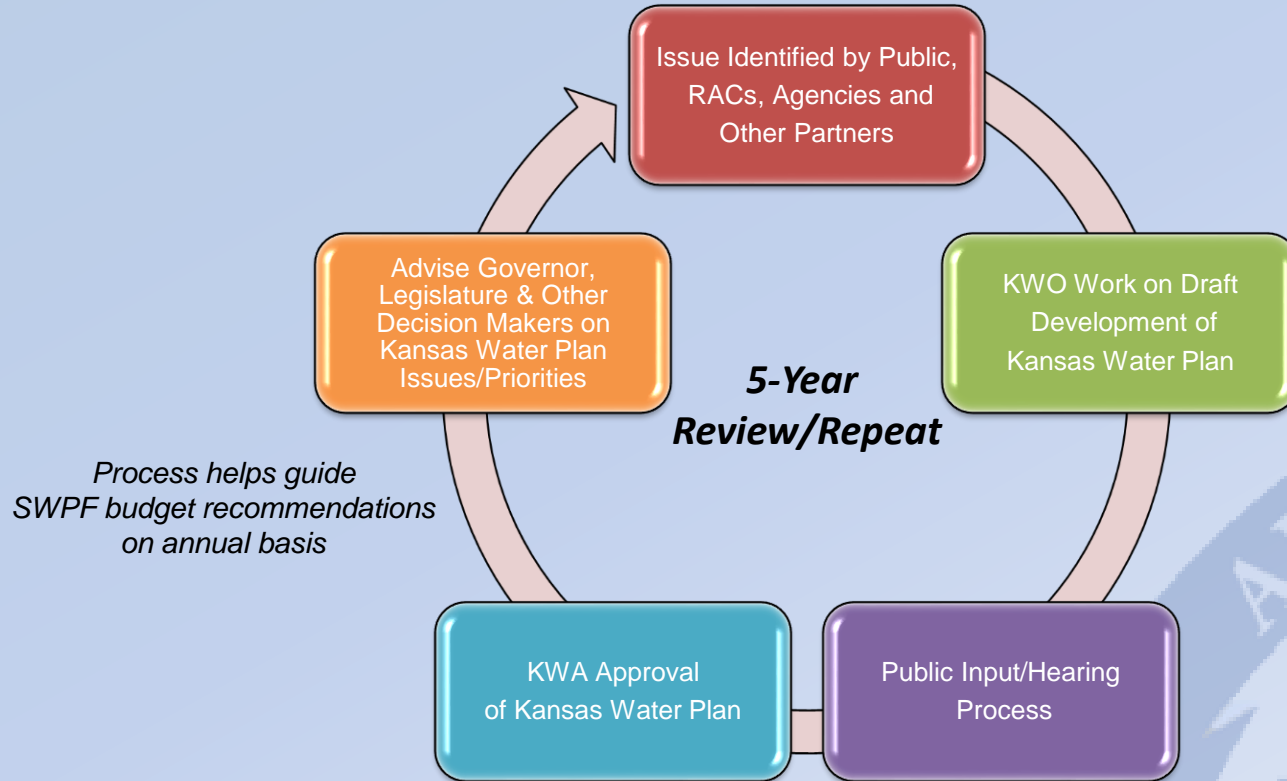




# Regional Advisory Committee Membership

- **Volunteer Positions**
- **4-Year Terms**
- **Chairs Appointed by KWA Chair**
- **Membership Approved by KWA**
- **Core Membership Categories:**
  - **Agriculture, At-Large Public, Conservation/Environment, Industry/Commerce, Public Water Supply**
- **Region-specific Categories Can Include:**
  - **Dryland Farming, Fish & Wildlife, Groundwater Management, Irrigated Farming, Planning and Zoning, Recreation, Surface Water Irrigation, Water Assurance Districts, Watershed Districts, WRAPS and others**

# The State Water Planning Process





# 2023 ANNUAL REPORT

TO THE GOVERNOR AND LEGISLATURE

## KANSAS WATER AUTHORITY



### REPORT INCLUDES:

- KWA State Water Plan Fund Recommendations
- KWA Performance-Based Budget Information
- Updates on SWPF Projects/Initiatives
  - Ogallala Aquifer
  - Reservoir Water Supply & Sediment Management
  - Water Quality Initiatives
- Statewide Water Issue Updates

*Report available online at:*

<https://kwo.ks.gov/about-the-kwo/kansas-water-authority>

# Kansas Water Authority Appreciation

## ***Thank You!***

- Full restoration of the \$8 million SGF/EDIF demand transfer to the State Water Plan Fund.
- \$80 million for water supply storage debt at Hillsdale Lake, Clinton Lake and Big Hill Lake.
- Early debt retirement of 2015A/G bonds which included the John Redmond Reservoir dredging bond.

# KWA Recommendations for State Policy

## *Funding the Kansas Water Plan*

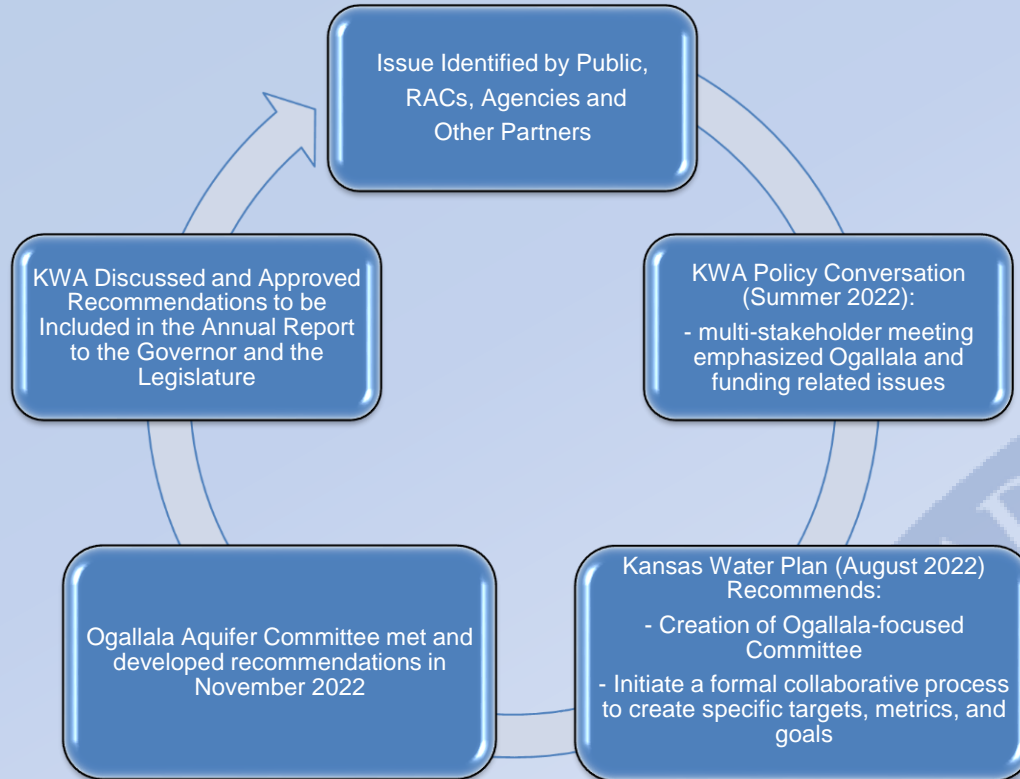
- The KWA urges the Legislature to fully fund implementation of the programs, projects, and recommendations in the Kansas Water Plan.
- Current revenue of the State Water Plan Fund is not sufficient to meet all current program needs described in the updated Kansas Water Plan.
- The fee structure that supports the SWPF has remained virtually unchanged since the fund was established in 1989. The KWA supports action that would generate sufficient revenue to meet the program needs described in the Kansas Water Plan.

# KWA Recommendations for State Policy

## ***State Appropriations to Leverage Funding***

- The KWA encourages the Legislature to appropriate state funds directly to communities which may be used to leverage additional federal, local, or private resources for priority projects.
- Federal legislation such as the Bipartisan Infrastructure Bill and the Inflation Reduction Act provide multiple opportunities for grant and cost-share programs focused on conservation and infrastructure.
- Many communities cannot access these grants because they cannot afford the required cost-share or lack professional expertise to prepare the grant applications. The KWA supports the Kansas Legislature appropriating financial assistance to such communities.

# KWA Recommendations for State Policy



# KWA Recommendations for State Policy

## ***Critical Depletion of the Ogallala Aquifer***

- The policy of planned depletion of the Ogallala Aquifer is no longer in the best interest of the State of Kansas.
- A formal collaborative process is needed to establish data-driven goals, metrics, and actions to halt the decline of the Ogallala Aquifer while promoting flexible and innovative management within a timeframe that achieves agricultural productivity, thriving economies, and vibrant communities – now and for future generations of Kansans.
- The collaborative process should engage state agencies, regional advisory committees, local stakeholders, groundwater management districts, and the Kansas Water Authority.





## Questions?

**Dawn Buehler**

**(785) 312-7200**

**[Dawn.BuehlerKWA@kwo.ks.gov](mailto:Dawn.BuehlerKWA@kwo.ks.gov)**

ASTRA